



*Eversafe Academy
Journal*



*Happy
Diwali*
2022



1. MD's Message

2. Our Achievements

3. Features & Highlights

- ▣ Our Corporate Social Responsibility Events

4. Industry News & Trends

- ▣ WSH - Singapore News/Trends/Compliances

5. Our Eversafe Stories

- ▣ Trainers

6. Testimonials - Endorsement of our Commitment to our Students and Customers

- ▣ From Our Clients

7. Health Tips & Strategies

- ▣ Simple Yoga Exercises

8. Fun with Puzzles & Games

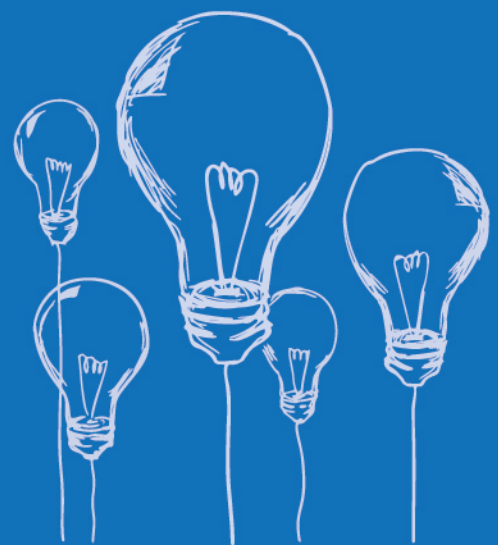
9. Latest EA Courses

10. Upcoming Events

11. Join Us!

- ▣ Alumni
- ▣ Job Openings

12. About Eversafe Academy



MD's Message



Welcome to the 1st Issue of Eversafe Academy Journal

It is my pleasure to launch the 1st Issue of our Eversafe Academy Journal (October 2022) to our local and global community of PMETs, our students and our alumni who have walked and learned and trained with us since the year 2008, which was when Eversafe Academy was started with the original vision of training students for the WSH industry.

We are most honoured to have trained more than half a million people in our 4 campus locations across Singapore conveniently situated next to popular MRT stations for the past 14 years.

We have created multiple channels to keep in touch and up to date with the latest news and happenings with our community of alumni, professionals and students continuously via our EA Mobile App, our website and our online community, which is an embodiment of one of our Values - Life-Long Learning with Eversafe Academy.

Our monthly issues of Eversafe Journal will value-add to the learning and networking of our community as each issue is carefully researched and published by our committed efforts and dedicated team of Management Staff, Curriculum Developers, Subject Matter Experts and our Editorial Team.

We aim to integrate Eversafe Academy and our students and community to the society through our contributions via the promotion of professional and best practices through our EA Journal.

We hope you enjoy our 1st issue of Eversafe Academy Journal (October 2022).



Our Achievements

1. *More than Half Million people have been trained* **583010***



2. *Eversafe Academy received approval from various authorities to conduct 100 courses*

SN	APPROVING AUTHORITIES	NO. OF COURSES
1	MINISTRY OF MANPOWER (MOM)	4
2	SKILLFUTURE SINGAPORE (SSG)	34
3	SINGAPORE CIVIL DEFENCE FORCE (SCDF) & SSG	5
4	SINGAPORE ACCREDITATION COUNCIL (SAC)	4
5	SINGAPORE RESUSCITATION AND FIRST AID COUNCIL (SRFAC)	7
6	SRFAC & SAC	2
7	COMMITTEE FOR PRIVATE EDUCATION (CPE)	16
8	SSG & CPE	2
9	EVERSAFE ACADEMY	27
TOTAL		101

3. *Blended Learning Methods. Eversafe Academy incorporated 17 types of blended learning methods to make the learning experience engaging and interactive*

- 1 VIRTUAL REALITY
- 2 GROUP DISCUSSIONS USING SPIN WHEEL
- 3 E- LEARNING
- 4 ONSITE- PROJECT WORK
- 5 MOCK UP FIRE DRILL
- 6 MICRO LEARNING
- 7 ONLINE QUIZ
- 8 GAME
- 9 ONLINE IDENTIFY HAZARDS
- 10 SYNCHRONOUS ONLINE LEARNING
- 11 ONLINE ASSESSMENT
- 12 SPIN WHEEL
- 13 AUGMENTED REALITY
- 14 EA BOT
- 15 INTERACTIVE VIDEO FOR ALL PRACTICAL SESSIONS
- 16 INSTANT PERFORMANCE REFLECTION (IPR)
- 17 EXPERIENTIAL LEARNING (10 STATIONS)



Our Achievements

4. EduTrust Accreditation 4 Years Award & Certification (7 Aug 2022 - 6 Aug 2026)



5. Corporate Tie-Ups

19,128

Total Corporate Companies

6,744

Registered Corporate Members



6. Experiential Learning Stations (ELS)

There are 10 types of experiential learning stations which will help the learners to experience the real life scenario that happens at the worksite. By going through these stations, learners understand how careful they should be at the worksite while doing any kinds of work.



7. New branch at Wan Lee

Eversafe Academy has opened another training branch at Wan Lee Road. This new training facility is fully equipped with new classrooms and practical areas for providing approved WSH training and courses.



 No.2, Wan Lee Road,
Singapore 627934



Features & Highlights

Our Corporate Social Responsibility Events

1. Blood Donation Drive

Understanding the social goodness of donating blood to save lives in times of emergencies and to sustain the lives of those with medical conditions, Eversafe Academy organized a blood donation drive in collaboration with "HSA - Blood Donation" at 1 Outram Rd, Health Sciences Authority, Singapore 169078 on 01 Oct 2022 as part of our social responsibility including all Eversafe Academy staff and students.

"Be the reason for someone's heartbeat".

EVERSAFE ACADEMY
Shape To Succeed

HSA
HEALTH SCIENCES AUTHORITY

Join HANDS
with

SINGAPORE Give Blood. Save Lives.

BLOOD DONATION DRIVE

DONATE BLOOD MAKE YOURSELF PROUD!

Venue:
No. 2, Kampong Kapoor Rd,
Near Jalan Besar MRT Station Exit B
Little India, Singapore-208674.

6297 8417 | 9381 3608
www.eversafe.edu.sg | training@eversafe.com.sg



Scan this QR Code to Donate Blood If anyone interested.





Features & Highlights

Our Corporate Social Responsibility Events

2. *Planting Trees*

Eversafe Academy creates awareness among our r community of learners and alumni by organizing an event to show the importance of planting a tree within our premises on 15 October 2022. The details of the event will be shared with you in our next EA Journal that will be published on November 2022.



“Plant a Tree, Green the Earth”

3. *Share ideas on CSR and participate in our CSR Activities*

Share your valuable inputs by scanning this QR code for access to our Corporate Social Responsibility webpage





Industry News & Trends

Workplace Safety and Health (WSH) - Latest News

Singapore's Minister for Manpower (MOM) Dr Tan See Leng has officially launched a Code of Practice (COP) at the Workplace Safety and Health (WSH) Conference 2022 on Monday, 19 September 2022, to help management teams shape the Workplace Safety & Health (WSH) culture in their companies.

Minister Tan stated that from the start of 2022 up to the date of the WSH Conference 2022, there have been 37 workplace fatalities - the same number for the whole of 2021. These workplace fatalities were mostly accidents that were due to preventable safety lapses, such as inadequate control measures or lack of adherence to safe work procedures.

Recognising the critical need to bring attention and vigilance on WSH, MOM recently announced a "heightened safety" period of six months (1 September 2022 to 28 February 2023), introducing unprecedented measures, such as the mandatory Safety Time-Out, and the upfront debarment from hiring migrant workers should there be any serious WSH lapses found following an accident.

Minister Tan added: "Beyond dealing with the immediate situation, it is also important to have structural changes to enable us to attain our WSH 2028 goals and sustain good WSH performance over the longer term. This means embedding safety into every company, every worksite, and every employee. This can only happen with a strong, pervasive WSH culture and ownership over WSH performance."

More Information on MOM's "Heightened Safety Period Measures to Address Spate of Workplace Fatalities" can be found via this link:

<https://www.mom.gov.sg/newsroom/press-releases/2022/0109-heightened-safety-period-measures-to-address-spate-of-workplace-fatalities>





Industry News & Trends

Code of Practice on WSH Risk Management

WSHC published the code of practice on WSH Risk Management on 10 Nov 2021.

The purpose of this Code of Practice on WSH Risk Management (RMCP) is to establish the minimum requirements and duties for implementing workplace RM in Singapore, and to provide guidance on its implementation. This RMCP applies to all workplaces in Singapore that are governed by the Workplace Safety and Health (WSH) Act. Conducting risk assessment and implementing risk control measures are requirements under the WSH (Risk Management) Regulations.

To know more about the Code of Practice on WSH Risk Management, visit <https://www.tal.sg/wshc>.

WSH Vision 2028

Workplace Safety and Health Council:

1. To achieve WSH (Workplace, Safety and Health) vision, we need sound knowledge about Total WSH and other safety topics. To know more about WSH, please visit WSH Council website- <https://www.tal.sg/wshc>
2. WSH information are changing frequently. To update your WSH knowledge and to get WSH Alert, please subscribe:
Visit: <https://www.tal.sg/wshc>

The screenshot shows two figures illustrating accident scenes. Figure 1 shows a worker on a scissor lift with labels for 'Covering in walkway', 'Removal of guard rail', and 'False ceiling above'. Figure 2 shows a worker on a scissor lift with labels for 'The brightest step on the scissor lift panel that acts as a trip hazard' and 'Fall through'. To the right of the figures is a list of activities: 'Accident notifications and advisories', 'Events and programmes', and 'Campaigns, awards and competitions'. Below the list is a green 'Subscribe' button.



* Source from WSHC website (<https://www.tal.sg/wshc>)



2021 WORKPLACE FATALITIES

37 FATALITIES

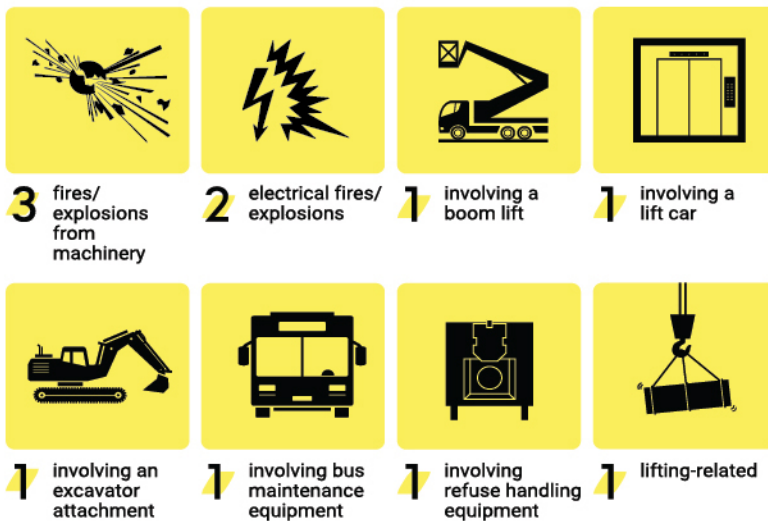
11 Vehicular-Related



10 Falls (FFH and STF)



11 Machinery and Equipment



5 Others



Our Eversafe Stories

- Motivational Story for the Month

Belief

The Elephant Rope Story

A gentleman was walking through an elephant camp, and he spotted that the elephants weren't being kept in cages or held by the use of chains. All that was holding them back from escaping the camp, was a small piece of rope tied to one of their legs. As the man gazed upon the elephants, he was completely confused as to why the elephants didn't just use their strength to break the rope and escape the camp. They could easily have done so, but instead, they didn't try to at all. Curious and wanting to know the answer, he asked a trainer nearby why the elephants were just standing there and never tried to escape. The trainer replied; "when they are very young and much smaller, we use the same size rope to tie them and, at that age, it's enough to hold them. As they grow up, they are conditioned to believe they cannot break away. They believe the rope can still hold them, so they never try to break free." The only reason that the elephants weren't breaking free and escaping from the camp was that over time they adopted the belief that it just wasn't possible.

Like the elephants, how many of us go through life hanging onto a belief that we cannot do something, simply because we failed at it once before?

Don't confine yourself any longer to the belief that you can't do something, shatter those thoughts and beliefs and spread your wings and fly! Believing you can become successful is the most important step in actually achieving it.!!!



Testimonials

Endorsement of our Commitment to our Students and Customers

From Our Clients

Some of the endorsements and feedback from our valued clients



Heungwood Industrial Co. Ltd



I want to thank you for your training center and staffs for providing the excellent services. We prefer your training center, because of most of the courses avail at one place. You are good at focusing on what customer need. Your customer service is helpful to gain the knowledge about the safety courses. Your website is useful to download the certificates and results.



GE



Green Engineering and Construction Pte Ltd This is to appreciate that Eversafe Academy Pte Ltd. has supported for us regarding the courses and Trainings for our workers in an effective and good manner. We are looking forward and long term relation with them in the upcoming years.



STEC



Thank You for your quality of service to Us. For our T11 Project site we most of the time liaise with Ms. Shagila for class booking and we received, 1.Excellent quality of service in Course booking for my workers. 2.Good guidance and support in other than SOC Tunnel class too. 3.Prompt response on booking



Zhang Hui construction Pte. Ltd



We are engaging service with you for past few years. We really appreciate your prompt response. Especially your flexible schedules and quality of training is very good. Your customer service guidance is supportive for us. We would engage your services in future projects also.

Company Name : MCI Career Services Pte Ltd

Eversafe Academy Customer Support Officer has been very helpful throughout the whole process of registering, She even took the effort to ensure everything is in order even on weekends. She was approachable whenever we required and this is what makes a good customer service.

Name of the Student : Mr. Kyaw Naing Oo

The Diploma in Civil Engineering course was very helpful for me to realize my dream, thanks to Eversafe Academy. All the staffs were very kind and helpful. The DCE trainer was teaching and explaining very well, he was very patient with us. Thanks a lot to the trainer.





Simple Fitness Tips

Begin and End

Stand tall, feet together on ground, hands together at chest.

1. Inhale

Lift arms over head, lean hips forward, arch back.

10. Inhale

Raise torso, extend arms over head, arch back.

2. Exhale

Chest forward and knees slightly bent. Fold in.

9. Exhale

Come up halfway to flat back.

SUN SALUTATION

While practicing the poses, meditate on expressing gratitude for the sun, which makes all life on earth possible.

3. Inhale

Come up halfway to flat back.

8. Inhale

Feet forward between hands. Slightly bend legs. Fold in.

4. Exhale

Both feet back in plank, back straight with shoulders over wrists.

7. Exhale

Lift tailbone, push back. Keep your back straight, knees slightly bent.

5. Exhale cont.

Lower knees, chin, and chest to floor. Hips high and elbows in.

6. Inhale

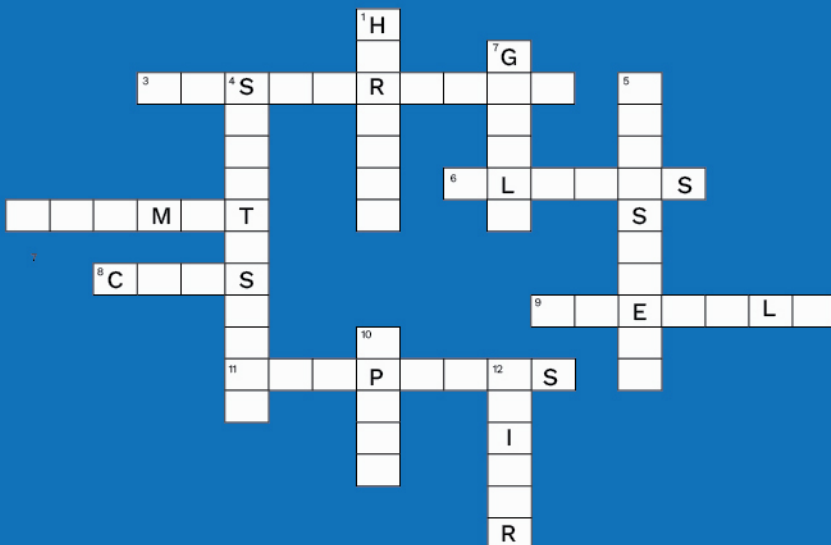
Straighten legs, hips forward, bend slightly at waist. Lift chest.

#DESTRESSYOURSELF

DESTRESS YOURSELF



Fun with Puzzles & Games



ACROSS

- 3 PREVENT BREATHING IN DUST, TOXIC FUMES
- 6 HANDS PROTECTION
- 7 HEAD PROTECTION
- 8 WORKERS WEAR _____ TO SHIELD FROM SUNLIGHT
- 9 GARMENT FOR PROTECTION AGAINST DIRT OR HEAVY WEAR
- 11 HEARING PROTECTION

DOWN

- 1 FALL PROTECTION
- 2 EYES PROTECTION
- 4 FEET PROTECTION
- 5 FACE PROTECTION
- 10 WORN OVER THE FRONT PART OF THE BODY
- 12 ANKLE AND LOWER LEG PROTECTION

"Please fill up the crossword puzzle and snap a picture to upload via our QR Code with your details for a chance to win prizes before 1st November 2022"





Latest EA Courses

Check Out Our New Courses



Operate Fork Lift Course (Licensed) - OFL
Duration - 25.5 Hours
Price - S\$280

[Know more...](#)



Operate Boom Lift Course (OBL)
Duration - 9 Hours 15 Minutes
Price - S\$250

[Know more...](#)



Operate Fork Lift Course (Without Licensed) - OFL
Duration - 35 Hours
Price - S\$500

[Know more...](#)



Operate Scissor Lift (OSL)
Duration - 9 Hours 15 Minutes
Price - S\$250

[Know more...](#)



HazMat Transport Driver Permit (HTDP)
Duration - 8 Hours
Price - S\$130

[Know more...](#)



Operate Vertical Personnel Platform (OVPP)
Duration - 9 Hours 15 Minutes
Price - S\$250

[Know more...](#)



Perform Rigger and Signalman Tasks (PRST)
Duration - 17.5 Hours
Price - S\$250

[Know more...](#)



Supervise Safe Lifting Operations (SSLO)
Duration - 35 Hours
Price - S\$250

[Know more...](#)

Celebrate this **DIWALI** with our latest courses to **Upskill** your workforce

Please scan QR Code to access our full range of courses for registration





Upcoming Events

1. Celebrating Deepavali the “Festival of Lights” at our HQ of Eversafe Academy (2 Kampong Kapur Road Singapore 208674) on Friday 21 October 2022



Happy Deepavali

2. Eversafe Academy
Conducting
“Diwali Special Classes”
on Oct 22, 23 & 24 (Fri-Sat-Sun)
at our all branches.

EVERSAFE ACADEMY
 Man. No: 200613 (06) Steps To Success
 SEN | SAC | MUM | SWAS | SCOT & REGISTERED PEI
 • LITTLE INDIAN • 100 KOON • PIONEER • WAN LEE

Special Classes on
Diwali
 22, 23 & 24 OCTOBER 2022
 Sat - Sun - Mon

Get in Touch with us
 6297 8417 9381 3608
 Visit: www.eversafe.edu.sg
 Mail: training@eversafe.com.sg

Book Your Seats Now!

Scan to Visit Our Website



Upcoming Events

3. Workshop on “CRITICAL THINKING AND DECISION MAKING” will be conducted on 26 November 2022 at 07.40pm to 08.40pm for our ongoing students



PLEASE SCAN QR CODE
TO REGISTER OUR
“CRITICAL THINKING AND
DECISION MAKING”
WORKSHOP



Join Us!

Alumni

ALUMNI PROGRAM



Sign up now with your fellow alumni and look forward to catching up with old friends and making new ones at the event.
PARTICIPATION IS FREE!

*EA Alumni Event coming up on Saturday
15 October 2022*



Job Openings



OUR CURRENT OPENINGS!

- *STUDENT SUPPORT SERVICE - 2*
- *SALES AND MARKETING - 3*
- *ACCOUNTS EXECUTIVE - 1*

Please email us at hr1@eversafe.com.sg to apply

About Eversafe Academy

Eversafe Academy is a well-established training institute providing innovative training to meet the needs of the adult learners and PMETs of Singapore and regionally. We are also one of the Approved Training Providers, well-known in the WSH sector, with a team of highly experienced and dedicated safety professionals who are trained and capable in the implementation of workplace safety, corporate loss control and regulatory compliance. We have a group of experienced engineers who can assist in the implementation and establishment of various management systems.

We shape the safety skill sets of workers, Supervisors and Managers to ensure that they have adequate knowledge to carry out their works safely. We also organize training for corporate companies.

We provide professional advice and manage a safe workplace for you by providing method statements, risk assessment, safe work procedures and other essential professional consultancy services.

We are also accredited with a 4-year EduTrust Accreditation quality standard mark as part of the recognition of our excellence in quality teaching and student experiences as a registered Private Education Institute.



We hope you enjoyed
our 1st Issue EA Journal.
Thank you.





EMERGENCY HOTLINE NUMBERS

- | | | | | | |
|--------------------|------|------------|---------------|---------------------|---------------|
| • POLICE | 999 | • MOM | 6438 5122 | • PUB | 1800 225 5782 |
| • FIRE / AMBULANCE | 995 | • NEA | 1800 225 5632 | • COMFORT / CITYCAB | 6552 1111 |
| • NON EMERGENCY | 1777 | • SP POWER | 1800 778 8888 | • SMRT | 6555 8888 |



EVERSAFE ACADEMY
Steps To Success



+65 6297 8417



+65 9381 3608



training@eversafe.com.sg



www.eversafe.edu.sg



No.2, Kampong Kapur Rd,
Little India
Singapore 208674



No.3, Soon Lee Street,
#04-14,16,17,
Pioneer Junction,
Singapore 627606



No.2, Joo Koon Road,
Singapore 628966



No.2, Wan Lee Road,
Singapore 627934

