

ENGLISH



EVERSAFE ACADEMY[®]
Steps To Success

EA JOURNAL

NOVEMBER ISSUE#26

Merry 🎄
Christmas &
Happy New Year

★ SPECIAL CLASSES ★

BOOK ANY COURSE @

\$S\$10*

*T&C Apply



CHRISTMAS CLASSES



25, 29TH DEC,
01 & 05TH JAN

NEW YEAR CLASSES



01, 05, 12 &
19TH JAN

COMBINED CLASSES

25, 29TH DEC,
01, 05, 12 & 19TH JAN

/EVERSAFE_ACADEMY



SCAN HERE

www.eversafe.edu.sg

Table of Contents

04 MD'S MESSAGE	10 OUR ACHIEVEMENTS	11 FEATURES & HIGHLIGHTS	13 INDUSTRY NEWS & TRENDS
18 MOTIVATIONAL STORY	19 OUR TRAINERS	20 TESTIMONIALS	22 HEALTH & FITNESS PROGRAMMES
23 HEALTH TIPS & STRATEGIES	24 FUN WITH PUZZLE & GAMES	25 SOCIAL MEDIA PRESENCE	26 CORPORATE SOCIAL RESPONSIBILITY - CSR EVENTS
27 LATEST EA COURSES & UPCOMING EVENTS	28 EA SKY YOGA	29 JOIN US	30 ABOUT EVERSAFE ACADEMY

150+

courses

SCAN HERE



1. MD'S MESSAGE

Dear Esteemed Readers,

Welcome to the November 2024 edition of our Eversafe Academy (EA) Journal, where we reflect on an eventful month marked by growth, community engagement, and festive celebration. October 2024 was a milestone month as we completed several rigorous audits, reinforcing our commitment to excellence across multiple standards. Alongside these achievements, we connected with the community through a heartfelt visit to the SUNLOVE Abode for Intellectually Infirm Ltd and hosted our annual Alumni Meet, celebrating the achievements and journeys of our graduates. Additionally, our commitment to environmental sustainability was showcased through a tree-planting initiative, and we concluded the month with vibrant Diwali festivities, sharing joy and gratitude with our academy family. Join us as we recap these enriching experiences and accomplishments that continue to drive our mission forward.

1. Completion of Audits for the month of October

October 2024 marked a pivotal period of evaluation and growth for us at Eversafe Academy, as we are committed to upholding and advancing our standards in line with multiple regulatory requirements and quality frameworks. This month, we undertook the following audits:

- ☀️ **ISO 29993:** Surveillance audit across 12 courses and new course approval audit for 6 courses, ensuring quality in education and training services
- ☀️ **ISO 27001 (ISMS):** Information Security Management System, enhancing data security protocols
- ☀️ **ISO 22301 (BCMS):** Business Continuity Management System, strengthening resilience and preparedness
- ☀️ **DPTM Audit:** Data Protection Trustmark, underscoring our dedication to data privacy and cyber security



1. MD'S MESSAGE



These rigorous audits offered essential insights, allowing us to refine our processes and make impactful improvements in applications in our Digital Ecosystem. This continuous commitment to excellence drives our mission to provide the highest standards of quality and security for our students, staff, and partners.

2. Visit to SUNLOVE Abode for Intellectually Infirm Ltd

On 9th October, we had the privilege of visiting SUNLOVE Abode for Intellectually Infirm Ltd, located at 70 Buangkok View, along with a team of volunteer staff. Our visit was aimed at giving back to the community and spending quality time with the infirmed and senior residents of the SUNLOVE HOME.



1. MD'S MESSAGE

As part of our contribution, we arranged a special lunch for the residents. My team and I were honored to serve the meal and spend meaningful time interacting with the infirmed and seniors. The experience was both humbling and enriching, reminding us of the importance of compassion and community support.

Our visit to SUNLOVE was a truly rewarding experience, and we look forward to more opportunities to connect with and support the senior community in meaningful ways.

3. Alumni Meet 2024: A Memorable Gathering

Our Alumni Meet 2024 was a meaningful and memorable event, bringing together 21 graduates from our Diploma and Advanced Certificate (Level B) programs. The evening began with an energizing ice-breaker activity that set a warm, lively atmosphere. Alumni enjoyed reconnecting and participating in the activity, which concluded with an award for the winning team.



#2024

ALUMNIMEET

1. MD'S MESSAGE

The program continued with an inspiring presentation by our Managing Director, who reflected on the Academy's growth and acknowledged the contributions of our alumni. His speech highlighted the values that Eversafe Academy instills and the positive impact our graduates have in various industries.

A sharing session followed, where alumni took turns recounting their personal experiences, career journeys, and challenges. This exchange fostered a sense of camaraderie, as alumni reflected on how Eversafe Academy had prepared them for the real world.

The gathering ended with a delightful dinner, allowing alumni to catch up, network, and strengthen their bonds with each other and with the Academy. Alumni Meet 2024 reminded us of the lasting connections within our community and the shared experiences that unite us. We look forward to continuing these traditions and supporting our alumni in their future endeavors.

4. Tree Planting Initiative at Eversafe Academy

At Eversafe Academy, we are committed to promoting greenery and environmental sustainability. As part of our initiative to create a green environment, we have introduced small plants within our premises, enhancing the natural beauty and ambiance of our space.

On 12th October, we held a special tree planting event to further this mission. Staff representatives, alumni, and members of the public joined together to make this event a success. We planted three trees in total, each symbolizing our dedication to sustainability and community engagement. Our Managing Director planted a Mango tree, a staff representative planted a Lemon tree, and an alumni representative planted a Plantain tree.

1. MD'S MESSAGE

This tree planting event reflects our ongoing commitment to a greener future, and we look forward to expanding these efforts as we continue to prioritize environmental stewardship at Eversafe Academy.



5. Diwali Celebration 2024 at Eversafe Academy

This Diwali, Eversafe Academy lit up the festive season by spreading joy and unity among our entire community. To honor this special time, we prepared goody bags filled with an array of traditional Diwali sweets and karams, sharing these tokens of appreciation with everyone who forms the backbone of our academy—our dedicated administrative team, full-time trainers, associate trainers, and our esteemed customers.



1. MD'S MESSAGE

Since our first Diwali initiative in 2014, this celebration has become a cherished tradition, symbolized our gratitude and fostering an atmosphere of togetherness. Now, in our seventeenth year of celebration, we are more committed than ever to continuing this annual tradition, believing that with the blessings of the Almighty, we will bring happiness, unity, and the festive spirit to our academy family each year.

Conclusion:

As we look back on October's achievements and memorable events, we are filled with gratitude for the Eversafe community and the unwavering support of our students, alumni, and partners. Our audit preparations and successful completions affirm our commitment to high standards, while our community initiatives, like the SUNLOVE visit and Alumni Meet, deepen our bonds and expand our vision of collective growth and responsibility. This month's activities—whether enhancing our green spaces or celebrating Diwali together—reflect the values that make Eversafe Academy more than just an institution. We look forward to more opportunities to create impact, foster community, and continue our journey toward excellence.



WARM REGARDS,
R. MURUGESH
(MANAGING DIRECTOR)
EVERSAFE ACADEMY PTE LTD



2.

OUR ACHIEVEMENTS

WE HAVE SUCCESSFULLY
TRAINED AND GRADUATED
809,078+
STUDENTS AS OF OCTOBER 2024



3.

FEATURES & HIGHLIGHTS

- Our EA Safety Committee was created comprising of EA Management and selected highly experienced WSH Trainers with a focus on the daily safety surveillance and safety reviews of our 4 training branches. October month meeting was conducted on 28th Oct 2024 at our Pioneer location.

The meeting was headed by our Managing Director Mr. Murugesh along with the 11 other members.



- Eversafe Academy conducted planting tree activity on 12th October 2024.



3.

FEATURES & HIGHLIGHTS

- Eversafe Academy conducted **Diwali special classes on 31st Oct, 1st Nov, 2nd Nov and 3rd Nov**

- Eversafe Academy conducted workshop on **“Setting up your Goals” on 26th Oct 2024** with 106 members

- Eversafe Academy successfully conducted **Free Yoga class in the month of October** with the number of students 5.

- Eversafe Academy conducted **Free Spoken English Classes in the month of October 2024**. Ten students have got benefitted with this class.



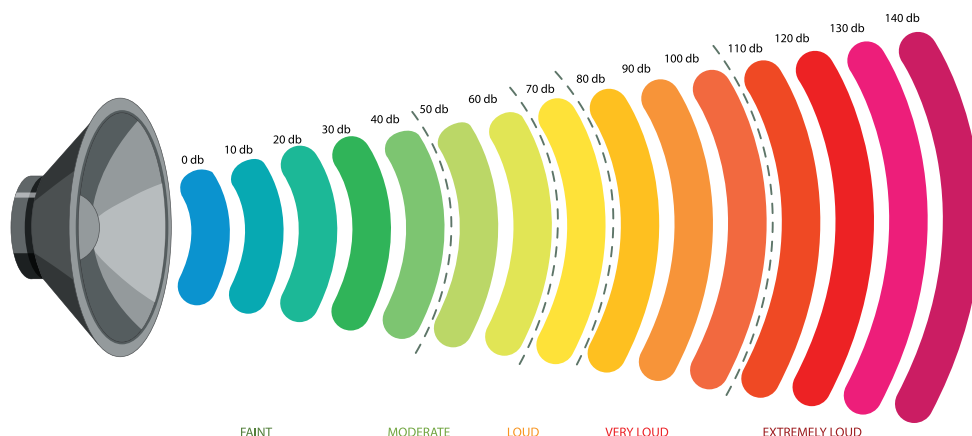
● Preventing Workplace Noise-Induced Deafness

Noise-induced deafness (NID) is the most prevalent occupational disease in Singapore, affecting many workers exposed to high levels of noise from machinery, equipment, and processes. The irreversible nature of hearing loss not only impairs communication but also reduces job performance, adversely impacting an individual's livelihood and quality of life. Given the importance, of NID, the Ministry of Manpower (MOM) will soon conduct inspections in manufacturing environments to ensure compliance with noise control standards and safeguard workers' hearing.

● Workplace Noise Monitoring

The first step in preventing NID is to measure and monitor workplace noise. Noise monitoring provides insights into the levels of noise present in the work environment, helping to identify if workers are at risk of hearing loss. A thorough site walkabout should be conducted to pinpoint noisy equipment, tools, and work processes. Common noise sources include machinery like compressors, grinders, and heavy-duty equipment.

Engaging a competent person, such as a noise monitoring officer, is essential for accurate measurement. This officer should assess both the noise levels emitted by equipment and the exposure levels of workers, which can be evaluated through personal dosimetry. Based on the monitoring results, action plans should be developed to mitigate the risks associated with excessive noise. These plans should involve implementing noise reduction measures for each identified source, designating noisy areas as "hearing protector zones," and ensuring proper signage. Additionally, workers exposed to high noise levels should undergo annual audiometric examinations to monitor hearing health.



• Managing Workplace Noise Levels

To effectively reduce workers' exposure to noise and prevent NID, noise control measures must be implemented. These measures are categorized into upstream risk control and administrative controls.

• Upstream Risk Control:

Focusing on elimination, substitution, and engineering control is more effective in reducing noise levels

Elimination involves removing the noisy machine, equipment, or tool entirely, which addresses the noise source directly.

Substitution entails replacing noisy equipment with quieter alternatives, such as using electric motors instead of diesel engines.

Engineering Control includes installing soundproof enclosures around machinery or applying insulating materials to noisy parts. Engineering controls reduce the noise emitted and can significantly lower workers' exposure.

• Administrative Controls:

These involve changes in work practices or policies to reduce noise exposure. Examples include job rotation to limit individual noise exposure time and planning work schedules to minimize prolonged exposure to loud equipment. Although less effective than upstream controls, administrative controls still play a role in minimizing risk when used in combination with other measures.



Minimise time spent in noisy areas



• Using Hearing Protectors

Hearing protectors, such as earmuffs and earplugs, should be provided to workers exposed to noise levels above 85 dB(A). These devices need to have a certified Noise Reduction Rating (NRR) to ensure they can effectively reduce noise exposure. Worker training is crucial to emphasize the impact of noise on hearing, the importance of wearing hearing protection, and the correct way to use the equipment. Displaying warning signs at the entrances to noisy areas serves as a reminder for workers to put on their hearing protectors.



Use hearing protectors in noisy areas



Put on your hearing protector properly



• Monitoring Hearing Health through Audiometric Examinations

Audiometric examinations play a vital role in monitoring workers' hearing health and detecting early signs of NID. New hires should undergo audiometric testing within three months of starting employment, while existing workers exposed to excessive noise should be tested annually. Tests should be conducted by trained personnel in an audiometric booth to ensure accuracy. To obtain reliable results, workers should limit their noise exposure for at least 16 hours before the examination.



Go for yearly audiometric examination



Preventing Workplace Noise-Induced Deafness

For workers diagnosed with occupational NID, employers must provide suitable hearing protectors, remind them to wear them, and consider redeployment to quieter work environments. Additional follow-up audiometric tests and consultations may be necessary based on the doctor's recommendations. It is also mandatory for employers to report each case of occupational NID to the MOM, ensuring that appropriate actions are taken to prevent further impairment.

Regulatory Framework and Compliance

The Workplace Safety and Health (WSH) regulations in Singapore set out the permissible exposure limits for noise, which are crucial for ensuring compliance and protecting workers. Under the WSH (Noise) Regulations 2011, excessive noise is defined as exposure above 85 dB(A) over an eight-hour workday or a peak sound pressure level exceeding 140 dB(C). Adherence to standards such as SS 657:2020 for workplace noise control and SS 549:2009 for hearing protector selection, use, and maintenance further supports efforts to mitigate noise hazard.



• Conclusion

The prevention of noise-induced deafness is a shared responsibility between employers, workers, and regulatory authorities. By implementing comprehensive noise monitoring, adopting noise control measures, promoting the use of hearing protectors, and conducting regular audiometric examinations, the risk of NID can be significantly reduced. Companies must continuously review and improve their noise management strategies, fostering a safer and healthier work environment that prioritizes hearing conservation.



Thanikachalam Rameshkumar
Head – Academic Department
Eversafe Academy

References:

<https://www.tal.sg/wshc/resources/training-materials/training-slides/5-wsh-tips-to-preventing-noise-induced-deafness>

5.

MOTIVATIONAL STORY



Once upon a time a psychology professor walked around on a stage while teaching stress management principles to an auditorium filled with students. As she raised a glass of water, everyone expected they'd be asked the typical "glass half empty or glass half full" question. Instead, with a smile on her face, the professor asked, "How heavy is this glass of water I'm holding?" Students shouted out answers ranging from eight ounces to a couple pounds. She replied, "From my perspective, the absolute weight of this glass doesn't matter. It all depends on how long I hold it. If I hold it for a minute or two, it's fairly light. If I hold it for an hour straight, its weight might make my arm ache a little. If I hold it for a day straight, my arm will likely cramp up and feel completely numb and paralyzed, forcing me to drop the glass to the floor. In each case, the weight of the glass doesn't change, but the longer I hold it, the heavier it feels to me."

As the class shook their heads in agreement, she continued, "Your stresses and worries in life are very much like this glass of water. Think about them for a while and nothing happens. Think about them a bit longer and you begin to ache a little. Think about them all day long, and you will feel completely numb and paralyzed – incapable of doing anything else until you drop them."

THE MORAL:

It's important to remember to let go of your stresses and worries. No matter what happens during the day, as early in the evening as you can, put all your burdens down. Don't carry them through the night and into the next day with you. If you still feel the weight of yesterday's stress, it's a strong sign that it's time to put the glass down.



Adapted from the Original
Mr. Rambu Paul Dhinakaran G
(Senior Manager – HR)

6. OUR TRAINERS

Our MD Mr. Murugesh presented the monthly Trainer Excellence Pathway (TEP)

CERTIFICATE OF APPRECIATION FOR OCTOBER 2024'S EXEMPLAR TRAINER'S

FULL TIME TRAINERS



1. Affandy Westlake



2. Selvaraj Pothiraj



3. Chua Ah Seng

ASSOCIATE TRAINERS



4. John Mohan S/O Duraisangam



5. Sellachamy Somasundaran



6. Ng Siew Moh



7. TESTIMONIALS (CLIENTS)

COMPANY NAME - DMJC CONSTRUCTION & ENGINEERING(S) PTE. LTD
COMPANY INCHARGE - KOWSALYA
COURSE INCHARGE - MS JAYA

Dear Jaya,

Your contributions have been invaluable. Your attention to detail and willingness to go above and beyond expectations have truly made a difference. your efforts consistently demonstrate your passion for what you do.

Thank you once again for your dedication.

COMPANY NAME - EPCO & IT
COMPANY INCHARGE - MED VENLIG HILSEN
COURSE INCHARGE - MS PRIYANGA

Dear Priyanka;

I much appreciated the whole interaction with you. From the booking process to the training, to the issuance of cards, every step was very professionally managed, efficient, and the support much valuable.

I would highly recommend Eversafe to other colleagues.

COMPANY NAME - ASIA PACZ PTE LTD
COMPANY INCHARGE - -E.PERUMAL
COURSE INCHARGE - MS ANISH

I would like to extend my grand gratitude for your help and the action has been taken to sort out the issues.

COMPANY NAME - EVERSTAR FAB
COMPANY INCHARGE - MR QURAI SYAH RAHMAN
COURSE INCHARGE - NIVEDHA

Your dedication and attention to detail have made the entire process seamless and efficient.

I especially appreciate your proactive approach in reminding us about the upcoming courses. Your timely reminders have been incredibly helpful in ensuring that we stay on track with our training schedule.

7. TESTIMONIALS (STUDENTS)

STUDENT NAME - RAMAMOORTHY AAKASH CHATHIRIYAN
COURSE NAME - ADEEE
COURSE INCHARGE - MS PUNITHA

I have received a prompt response from Ms. Punitha As a Course Incharge she is sorting out all my queries and needs. She Explained all my doubts clearly.

STUDENT NAME - MIN KHANT OO
COURSE NAME - ADME
COURSE INCHARGE - MS PUNITHA

Ms. Punitha was patient with my questions and took the necessary time to solve my problem. She was meticulous in handling my problem.

STUDENT NAME - MANIVASAGAN SURESHKUMAR
COURSE NAME - LEVEL B
COURSE INCHARGE - MS KAUSHALYA

Mrs.kausalya mam was very good Admin
Speaking also very clear and calm any dout asking immediately reply
Thank you so much madam

STUDENT NAME - HOSSEN AKASH
COURSE NAME - LEVEL B
COURSE INCHARGE - MS KAUSHALYA

I understand you might be busy, but a quicker response would improve the experience. I really appreciated how quickly you serve my issue. Thank you for your excellent service.

8.

HEALTH & FITNESS PROGRAMMES

We're absolutely delighted to share the inspiring results from October's Eversafe Academy Health Challenge! Each of you have shown incredible commitment, and it's heartening to see our community pushing forward to live healthier, more active lives each month.

As we moved into October, consistency and building on personal records became the key themes. With each step towards reaching the daily goal of 10,000 steps, everyone demonstrated the positive impact of daily exercise on both physical and mental well-being. Let's give a big hand to all participants for their determination, and let's celebrate our top achievers this month!

Congratulations to Aparna, Elizabeth, and Anitha on achieving these fantastic results! Your dedication has truly set a high bar, showing that even small, daily strides can lead to outstanding achievements.

Let's continue this inspiring journey into November! Every bit of encouragement helps, so let's keep cheering each other on, staying active, and moving together toward even more amazing results. Here's to another month of health, happiness, and high spirits!



1 APARNA - 497,818 STEPS



2 ELIZABETH - 426,311 STEPS



3 ANITHA - 404,548 STEPS



**WALK & WIN
3,00,000 STEPS PER MONTH**



HEALTH TIP OF THE DAY

Grapes have been found to be beneficial for your health as they can help prevent blood clots, aid in digestion, prevent fatigue and relieve migraines.

10 BENEFITS OF CONSUMING GRAPES

1

ANTIOXIDANT-RICH

Grapes are loaded with antioxidants that help protect our cells from damage caused by free radicals, which can contribute to chronic diseases.

3

CANCER PREVENTION

Grapes contain various compounds, such as resveratrol and quercetin, which have been shown to have anti-cancer properties and may help inhibit the growth of tumours.

5

IMMUNE SYSTEM SUPPORT

Grapes are rich in vitamins C and K, which are important for immune function and can help ward off illnesses.

7

BRAIN HEALTH

Resveratrol, found in grapes, has been shown to protect brain cells from damage and improve cognitive function, potentially reducing the risk of neurodegenerative diseases like Alzheimer's.

9

HYDRATION

water content, making them a hydrating snack that can help maintain proper hydration levels in the body.

2

HEART HEALTH

The antioxidants in grapes have been linked to reducing cardiovascular disease risk by promoting healthy blood vessel function and reducing inflammation.

4

DIGESTIVE HEALTH

Grapes are a good source of dietary fibre, which aids in digestion and helps prevent constipation, promoting a healthy digestive system.

6

EYE HEALTH

Grapes contain different antioxidants, such as lutein and zeaxanthin, which may help protect the eyes from age-related macular degeneration and other eye diseases.

8

BLOOD SUGAR CONTROL

Grapes have a low glycemic index, meaning they have a minimal impact on blood sugar levels.

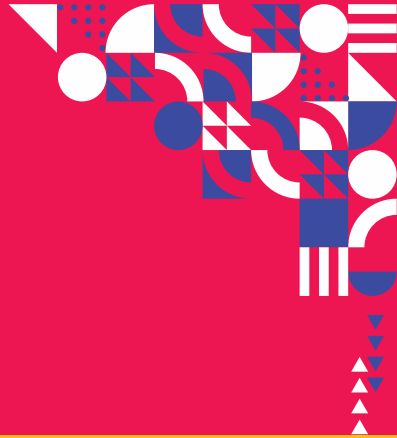
10

BONE HEALTH

Grapes contain essential minerals like calcium, magnesium, and potassium, which are vital for maintaining healthy bones and may contribute to reducing the risk of osteoporosis.

10.

FUN WITH PUZZLE & GAMES



FILL UP THE ALPHABET OR THE AUTHORIZED PERSON IN THE EMPTY SPACES OF THE TABLE

S/No	What	When	Who
1	Lifting equipment		
2	Lifting gears		
3	Boilers		
4	Air receivers / pressure vessels		
5	Scaffolds		
6	Fire extinguishers & systems		
7	Electrical installations		
8	Portable electrical appliances		
9	Forklift		
10	Pressure systems		

Choose from the list and Fill up the empty space:

- A) Authorized Examiner (AE)
- B) Scaffold Supervisor
- C) Registered Inspectors
- D) Professional Engineers (PEs)
- E) Licensed Electrical Workers (LEWs)
- F) 7 days
- G) 6 months
- H) 6 – 12 months
- I) 12 months
- J) Annually
- K) 24 months
- L) 12 – 24 months
- M) 5 years



SCAN QR CODE TO SUBMIT YOUR COMPLETED ANSWER

Please complete the Quiz answers and snap a picture to upload via our QR Code with your details for a chance to win prizes before 1st December 2024.

Prizes **1st** S\$50 **2nd** S\$40 **3rd** S\$30

LAST MONTH WINNERS



1st S\$50
MUNIYASAMY SATHISH



2nd S\$40
MUGUNDHAN MURUGAN



3rd S\$30
CHINNAKUTTI VELAN

SOCIAL MEDIA PRESENCE

EVERSAFE ACADEMY REACH AND IMPRESSIONS FOR OCTOBER 2024



SOCIAL MEDIA VIEWS **#799**

MOBILE APP VIEWS **#30,478**

YOUTUBE IMPRESSION - 234



Eversafe Academy believes that creating awareness through Social Media can make a positive impact on the public and learning communities. Eversafe Academy has been producing helpful and informational videos on our YouTube Channel "Eversafe Academy". *Some of the recent videos posted on our channel are*



01. Student Testimonial Videos

Posting testimonial videos can be a great way to showcase positive experiences and feedback from the students by obtaining proper consent from them.



2. Course Informational Videos

Engaging videos with course information such as contents, duration of the course, fee, and other details, to encourage and promote learning in-demand skills and courses to improve career advancement chances for various industries.



03. General Videos

In September 2024, Eversafe Academy produced a series of videos promoting our new course Certificate in Artificial Intelligence(CAI), Animated vertical videos with the help of the latest technology & Diploma Courses for Local & International Students.



CORPORATE SOCIAL RESPONSIBILITY - CSR EVENTS

We have planned to start the next batch for FREE YOGA Classes for migrant workers, and we are most pleased to share that there was a high demand for this type of FREE classes, which forms part of our Corporate Social Responsibility (CSR) service by Eversafe Academy for the migrant worker community.

UPCOMING CLASS DATE

- 3rd Nov 2024
- 10th Nov 2024
- 17th Nov 2024
- 24th Nov 2024
- 1st Dec 2024
- 8th Dec 2024
- 15th Dec 2024
- 22nd Dec 2024

Timing: 6 PM to 9 PM **Location:** Little India branch, No 2, Kampong Kapur Rd, Singapore 208674



EA will be conducting **FREE COMPUTER Classes** on the below scheduled dates.

UPCOMING CLASS DATE

- 10th Nov 2024
- 17th Nov 2024
- 24th Nov 2024
- 1st Dec 2024
- 8th Dec 2024
- 15th Dec 2024



From Eversafe Academy we will be visiting THK Nursing Home during the 4th week of November 2024.

For more info

Call: +65 6297-8417 | WhatsApp: +65 9381 3608
www.eversafe.edu.sg | training@eversafe.com.sg

LATEST EA COURSES & UPCOMING EVENTS

Eversafe Academy will soon launch the below list of new courses.

1. CONTROL NOISE AND VIBRATION (CNV)
2. MONITOR NOISE AND VIBRATION (MNV)
3. MANAGE HAZARDOUS SUBSTANCES (MHS)
4. MANAGE INDOOR AIR QUALITY (MIAQ)
5. OPERATE LORRY CRANE (OLC)
6. FORKLIFT OPERATOR REFRESHER TRAINING (FORT)
7. OPERATE REACH TRUCK (ORT)

1. Eversafe Academy has planned to conduct workshop on "**Resume Writing Skills**" on 30 November 2024
2. **Safety committee meeting** will be conducted at Little India on third week of November 2024.
3. Eversafe Academy has planned to conduct **Freshers Day** on second week of November 2024.

14. EA SKY YOGA

**EVERSAFE ACADEMY
SKY MEDITATION CENTRE**

WCSC APPROVAL NO: WCSC/APP/SGP/054

SCIENCE OF UNIFIED LIVING

A revolutionary insight blending Ancient Indian Wisdom
and Contemporary Science

Join Now



Scan QR to
View Our
Courses
in detail.

Visit our website for more details:

www.eversafe.edu.sg/yoga-home

Our Featured Courses:

1. YOGA FOR HUMAN EXCELLENCE – FOUNDATION COURSE
2. KAYAKALPA YOGA
3. INTROSPECTION COURSE (I, II & III)
4. CHILDREN YOGA
5. CERTIFICATE IN YOGA FOR HUMAN EXCELLENCE (CYHE)
6. DIPLOMA IN YOGA FOR HUMAN EXCELLENCE (DYHE)



15. JOIN US



We're **Hiring** now!

- Yoga Teacher .
- Marketing Executive .
- Network Executive .
- WSH Trainers (Associate) .
- Diploma Teachers (Associate) .



Email us your resume at

hr1@eversafe.com.sg

For more info contact:

Call: (+65) 9059 6339

| www.eversafe.edu.sg



**APPLY
NOW**



ABOUT EVERSAFE ACADEMY

Eversafe Academy is a well-established training institute providing innovative training to meet the needs of the adult learners and PMETs of Singapore and regionally. We are one of the well-known Training Providers in the WSH sector, with a team of highly experienced and dedicated safety professionals who are trained and capable in the implementation of workplace safety, corporate loss control and regulatory compliance. We have a group of experienced engineers.

We shape the safety skill sets of workers, Supervisors and Managers to ensure that they have adequate knowledge to carry out their works safely. We also organize training for corporate companies.

We are also accredited with a 4-year EduTrust Accreditation quality standard mark as part of the recognition of our excellence in quality teaching and student experiences as a registered Private Education Institute.



2008 Year Established	150+ Courses	200+ Dedicated Staffs	1200+ Corporate Clients
---------------------------------	------------------------	---------------------------------	-----------------------------------

WE HOPE YOU ENJOYED OUR 26TH ISSUE OF EA JOURNAL



For more information
visit - www.eversafe.edu.sg

Scan the QR
to read all our
Journal Issues





Island wide 4 Locations

LITTLE INDIA



No. 2, Kampong Kapur Rd,
Singapore 208674

JOO KOON



No. 2, Joo Koon Road,
Singapore 628966

PIONEER JUNCTION



No.3, Soon Lee Street, #04-14,
16,17, Pioneer Junction,
Singapore 627606

WAN LEE



No. 2, Wan Lee Road,
Singapore 627934

WE ARE
ALWAYS WITH YOU
FOR YOUR
TRAINING NEEDS

- +65 6297 8417
- +65 9381 3608
- www.eversafe.edu.sg
- training@eversafe.com.sg



TALK TO _____
OUR EXPERT!

Scan to Visit
Our Website

