



EVERSAFE ACADEMY®
Steps To Success



EA JOURNAL

JANUARY ISSUE #28



CHINESE NEW YEAR

★ ★ ★ SPECIAL CLASSES ★ ★ ★

JANUARY - 29, 30 & 31

FEBRUARY - 1 & 2

(WEDNESDAY - SUNDAY)



BOOK ANY COURSE @ JUST S\$10*



+65 6297 8417

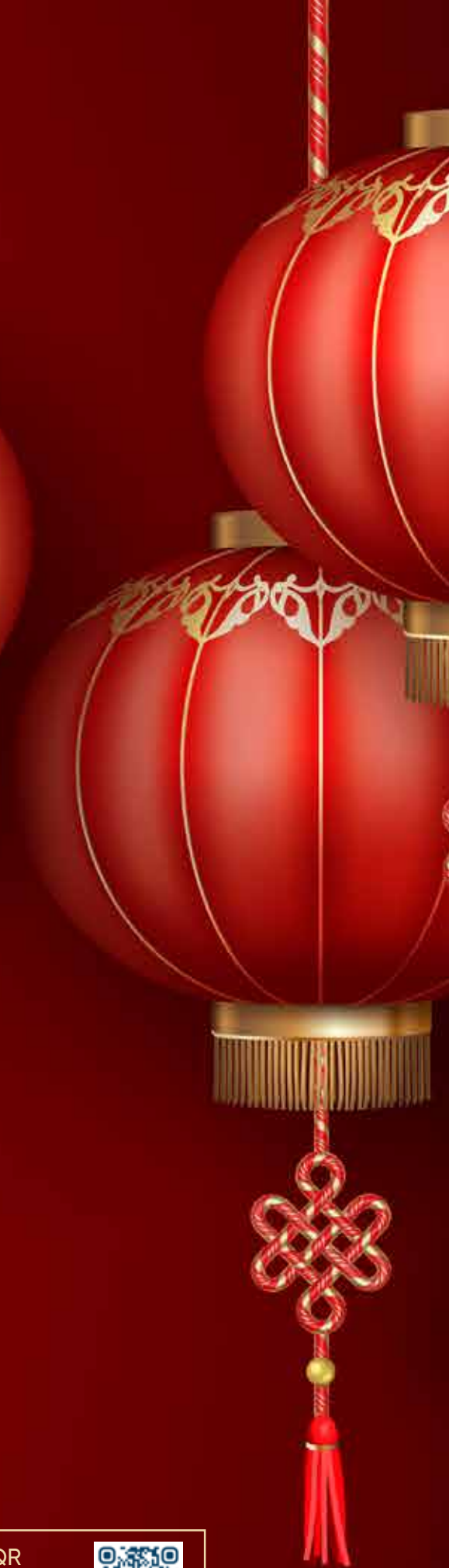
+65 9381 3608

/EVERSAFE_ACADEMY



Table of Contents

1. MD'S MESSAGE -----
2. OUR ACHIEVEMENTS -----
3. FEATURES & HIGHLIGHTS -----
4. INDUSTRY NEWS & TRENDS -----
- New** 5. TECH BITES -----
6. MOTIVATIONAL STORY -----
7. OUR TRAINERS -----
8. TESTIMONIALS -----
9. HEALTH & FITNESS PROGRAMMES (STAFF & STUDENT) -----
10. HEALTH TIPS & STRATEGIES -----
11. FUN WITH PUZZLE & GAMES -----
12. SOCIAL MEDIA PRESENCE -----
13. CORPORATE SOCIAL RESPONSIBILITY - CSR EVENTS -----
14. LATEST EA COURSES & UPCOMING EVENTS -----
15. EA SKY YOGA -----
16. JOIN US -----
17. ABOUT EVERS SAFE ACADEMY -----



WE'LL KEEP YOU INFORMED WITH THE
NEWEST FACTS AND KNOWLEDGE.
PLEASE CONTINUE TO SUPPORT US.



SCAN THE QR
TO READ OUR ALL
JOURNAL ISSUES



1. MD'S MESSAGE



Have a Great Year ★

DEAR ESTEEMED READERS,

Welcome to the January 2025 edition of the Eversafe Academy (EA) Journal.

As we stepped into 2025, Eversafe Academy takes pride in reflecting on the meaningful milestones and heartwarming initiatives that marked the close of 2024. From fostering partnerships and empowering communities to celebrating cultural traditions and recognizing excellence, the past year has been a testament to our unwavering commitment to education, workplace safety, and community enrichment.

This edition of the EA Journal highlights some of our most cherished moments, including our journey toward collaboration with NTUC, our Corporate Social Responsibility efforts, festive celebrations, and the launch of special initiatives that align with our mission. With these reflections, we aim to inspire continued growth, unity, and a renewed sense of purpose as we embrace the challenges and opportunities of the new year.

1. Journey Towards Achieving e2i & CTC Collaboration with NTUC

We are delighted to announce that Eversafe Academy has embarked on a promising journey to collaborate with NTUC for the Career Services Center (e2i) and the Company Training Committee (CTC). This initiative marks a significant step forward in our commitment to fostering professional development and enhancing workplace capabilities.

In line with this endeavor, we were privileged to host Ms.Siti Zubaidah Binte Ahmad and Mr.Noor Hayat Bin Khalil at our head office on 12 Dec 2024. Their visit was instrumental in providing a comprehensive briefing and valuable guidance on the procedures and requirements necessary for establishing a successful partnership.

We look forward to continuing this collaborative effort, which aligns with our mission of delivering quality education, workplace safety, and community support. Together, we aim to create meaningful opportunities and drive positive change within the workforce.



1. MD'S MESSAGE



Have a Great Year ★

2. A Heartwarming Visit to Sree Narayana Mission Old Age Home

As part of our unwavering commitment to Corporate Social Responsibility, Eversafe Academy recently had the privilege of visiting the Sree Narayana Mission Old Age Home on 20 Dec 2024. During this visit, we provided a meal to support the well-being of the residents, sharing moments of care and connection.

We take this opportunity to commend the staff of the Home for their remarkable dedication and selfless service, creating an environment where residents experience comfort and joy in their daily lives.

At Eversafe Academy, we firmly believe that Corporate Social Responsibility extends beyond achieving financial goals. It represents our duty to contribute meaningfully to society. We remain committed to fostering empathy, care, and positive change within our community.

This visit marks another step in our ongoing journey to make a lasting impact, and we eagerly look forward to continuing our efforts to uplift and support those around us.



3. A Memorable Christmas Celebration at Eversafe Academy

This year, we embraced the festive spirit with a meaningful Christmas and New Year 2025 celebration that brought joy and value to both our staff and the community we serve.

For our dedicated staff, we organized a heartfelt gathering to express our gratitude for their unwavering commitment and hard work throughout the year. The celebration was filled with camaraderie, festive cheer, and shared moments that strengthened our sense of unity and purpose as a team.

In line with our mission to empower and uplift, we also arranged a special class for migrant workers during these holiday seasons. Recognizing the sacrifices they make while being away from their families, we sought to make their Christmas meaningful by providing opportunities for personal and professional growth. The class was designed to enhance their skills and knowledge, ensuring their holidays were spent in a way that added value to their lives.

At Eversafe Academy, we believe in creating inclusive celebrations that resonate with purpose and positivity. This Christmas and New Year 2025, we reaffirmed our commitment to fostering a culture of care, learning, and community engagement, making the festive season truly memorable for everyone involved.

1. MD'S MESSAGE



Have a Great Year ★

4. Eversafe Academy Annual Day Celebration – A Night to Remember

On December 18th, Eversafe Academy hosted its much-anticipated Annual Day dinner, an evening dedicated to celebrating our team's hard work, achievements, and camaraderie. This vibrant event brought together all our administrative staff for a night of reflection, appreciation, and joy.

The evening commenced with a simple presentation by me to reflect on the year's milestones and successes. This meaningful recap served as a reminder of the dedication and teamwork that underpin our achievements.

Following the address, the event transitioned into lively cultural performances and engaging competitions that highlighted the diverse talents and creativity of our team. The energy and enthusiasm were contagious, as everyone participated with great zeal, adding a festive and spirited touch to the evening.

One of the highlights of the event was the much-awaited prize and award distribution ceremony. Awards were presented to recognize the Best Performer of the Year, as well as the Best Staff in various categories. Winners of the evening's competitions were also honored, ensuring that talent and effort were celebrated in every form.

The celebration culminated in a delightful dinner, where staff enjoyed a sumptuous meal in a relaxed and joyous atmosphere, strengthening bonds and creating cherished memories.

At Eversafe Academy, our Annual Day is more than just an event; it's a testament to our appreciation for the incredible individuals who drive our mission forward. This year's celebration was a true reflection of our values—unity, recognition, and gratitude—and a fitting way to close another successful year.



1. MD'S MESSAGE

5. Chinese New Year 2025: Welcoming the Year of the Snake

As we step into the Year of the Snake, Eversafe Academy extends our heartfelt wishes to everyone who has supported us on our journey. May this new year bring wisdom, resilience, and success to all.

In the spirit of the season, we are excited to announce CNY Special Classes on the 29th and 30th of January 2025. These sessions are designed to provide meaningful opportunities for individuals to enhance their skills and make productive use of the festive holiday period.

At Eversafe Academy, we are committed to creating initiatives that inspire growth and learning while celebrating cultural traditions. Here's to a prosperous Year of the Snake for all!

CONCLUSION:

As we celebrate the achievements and cherished moments of 2024, we are energized to forge ahead into 2025 with a commitment to excellence, innovation, and community impact. The initiatives outlined in this journal underscore our dedication to creating meaningful opportunities and fostering a culture of care, learning, and collaboration.

We extend our heartfelt gratitude to everyone who has been part of our journey—our staff, partners, and community members. Together, we will continue to strive for a brighter future, leaving a lasting legacy of positive change.

Here's to a Successful and Prosperous Year of the Snake!



R. MURUGESH
(MANAGING DIRECTOR)



2. OUR ACHIEVEMENTS

WE HAVE SUCCESSFULLY
TRAINED AND GRADUATED
822,232 +
STUDENTS AS OF DECEMBER 2024



3. FEATURES & HIGHLIGHTS



Have a Great Year ★

Our EA Safety Committee was created comprising of EA Management and selected highly experienced WSH Trainers with a focus on the daily safety surveillance and safety reviews of our 4 training branches. December month meeting was conducted on 30th December 2024 at our Wan Lee location.

The meeting was headed by our Managing Director Mr. Murugesh along with the 11 other members.



2. EVERS SAFE ACADEMY CONDUCTED CHRISTMAS AND NEW YEAR SPECIAL CLASSES ON 25TH DEC 2024, 01ST JAN 2025 AND 5TH JAN 2025, 709 STUDENTS GOT BENEFITED.



3. FEATURES & HIGHLIGHTS



Have a Great Year ★

3. EVERS SAFE ACADEMY CONDUCTED WORKSHOP ON "LEARNING STYLES" ON 28TH DEC 2024 WITH 30 MEMBERS.

4. EVERS SAFE ACADEMY CONDUCTED ANNUAL DAY EVENT ON 18TH DECEMBER 2024.

5. ON 15TH DECEMBER 2024, EVERS SAFE ACADEMY TOOK PART IN INTERNATIONAL MIGRANTS DAY, HANDING OUT 2000 GOODIE BAGS.

6. EVERS SAFE ACADEMY CONDUCTED TRAINERS MEET ON 26TH DECEMBER 2024, AROUND 85 TRAINERS PARTICIPATED.



3. FEATURES & HIGHLIGHTS



Have a Great Year ★

7. Eversafe Academy recently had the privilege of visiting Sree Narayana Mission Old Age Home on 20 Dec 2024. While on this visit, Mr. Shantosh Rajendren - Executive, Corporate Communications of Sree Narayana Mission Old Age Home, reviewed our previous Eversafe Journal publications and expressed gratitude for the content we produce. He also wanted to include the following details in our January 2025 Journal as below:

" Sree Narayana Mission (SNM) is a registered, secular charity and a member of the National Council of Social Services (NCSS). It achieved 'Institution of Public Character' (IPC) status in 1987.

SNM operates the 224-bed 'SNM Nursing Home@Chong Pang,' providing comprehensive care for residents who require nursing assistance, as well as three Senior Care Centres (SCCs) in Yishun, Bedok, and Woodlands, offering day care and community rehabilitation services. Additionally, we manage Meranti Home @ Pelangi Village, a 192-bed psychiatric welfare home, and two Active Ageing Centres (AACs) in Race Course Road and Woodlands to promote healthy ageing.

As a charitable organisation, SNM welcomes anyone who wishes to make a difference to join us as a volunteer or donor. You can support us by visiting our website at sreenarayanamission.org.sg to learn more about how you can contribute, or by reaching out to our donor relations team at donations@snm.org.sg or calling 6955 9555 " .



Enhanced Safety Measures for Higher-Risk Machinery and Combustible Dusts

Workplace safety and health (WSH) are crucial components in any industry, particularly in sectors where hazardous machinery and combustible dust pose significant risks. **Starting from 1 January 2025, Singapore's Multi-Agency Workplace Safety and Health Taskforce (MAST) will implement enhanced safety measures to mitigate the risks associated with high-risk machinery and combustible dust.** These measures aim to improve compliance, promote accountability, and ensure worker safety, addressing the recommendations from the 2021 Stars Engrg explosion incident. This article explores the enhancements, their impact, and how they contribute to a stronger safety culture in manufacturing.





SAFE USE OF HIGHER-RISK MACHINERY:

The manufacturing sector is a high-risk environment, with machinery-related incidents accounting for 14% of fatal and major injuries in 2023. To address this, the Fifth Schedule of the WSH Act will be expanded to include additional high-risk machinery such as sheet benders, milling machines, and industrial food processors. These additions are intended to strengthen regulations and hold manufacturers, suppliers, installers, and modifiers accountable for ensuring machinery safety.

KEY REQUIREMENTS FOR STAKEHOLDERS:

MANUFACTURERS AND SUPPLIERS:

- Design, test, and ensure machinery safety when properly used.
- Provide comprehensive safety information for users.

INSTALLERS AND MODIFIERS:

- Ensure installations and modifications do not compromise machinery safety.
- By enforcing these measures, buyers can have greater assurance that their purchases comply with required safety standards, reducing risks during operations. Additionally, manufacturers and suppliers must work with approved inspection companies under the MOM Inspection Programme to certify compliance.

SAFE USE OF COMBUSTIBLE DUST:

Combustible dust, such as flour, sugar, or potato starch, can form explosive dust-air mixtures, posing fire and explosion risks. Enhanced measures now require suppliers and occupiers to adopt stricter labeling and notification procedures for handling combustible dust.

4. INDUSTRY NEWS & TRENDS



Have a Great Year ★

LABELING REQUIREMENTS:

Containers and packages of combustible dust (25kg and above for organic dust) must include warnings such as:

"Warning: May form explosible dust-air mixture if dispersed."

Precautionary measures for handling combustible dust must be prominently displayed.

NOTIFICATION PROTOCOLS:

Factories handling combustible dust above prescribed thresholds must notify the Ministry of Manpower (MOM) and building owners.

- Notifications must be made one month before introducing combustible dust or as soon as quantities exceed thresholds.
- MOM oversight ensures compliance, while landlords can take preventive steps to avoid incompatible operations among tenants.
- The SS667 Code of Practice, specifically tailored for combustible dust handling, guides factories on storage, processing, and explosion prevention, reducing risks across various stages of dust management.



4. INDUSTRY NEWS & TRENDS



Have a Great Year ★

DRIVING A CULTURE OF WORKPLACE SAFETY AND HEALTH EXCELLENCE:

The 2025 measures emphasize accountability across the supply chain to create safer workplaces. Enhanced requirements for both machinery and combustible dust align with MAST's commitment to fostering a culture of WSH excellence.

Minister of State for Trade and Industry Mr. Alvin Tan, highlighted the importance of sustained improvements, particularly for Singapore's 7,000 manufacturing workplaces. He emphasized that these enhanced measures would bolster worker protection and reduce the likelihood of incidents. Similarly, Senior Minister of State for Manpower

Mr. Zaqy Mohamad, reiterated the significance of implementing recommendations from the Stars Engrg Inquiry Committee to address critical safety gaps.

CONCLUSION:

Enhanced safety measures for higher-risk machinery and combustible dust, effective from January 2025, represent a robust step towards improving workplace safety. These regulations reinforce compliance, accountability, and proactive risk management across the supply chain. By adhering to the expanded Fifth Schedule of the WSH Act and incorporating guidelines from the SS667 Code of Practice, industries can significantly mitigate risks, ensuring safer environments for workers. Stakeholders are encouraged to tap into available resources, such as the WSH Council's Approved Codes of Practice and MOM-approved inspection companies, to prepare for compliance effectively.



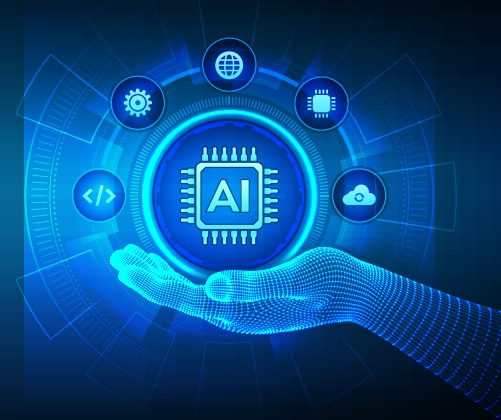
Thanikachalam Rameshkumar
Head – Academic Department
Eversafe Academy

References:

Ministry of Manpower. (2024). Enhanced Safety Measures for Higher-Risk Machinery and Combustible Dust.

<https://www.mom.gov.sg/newsroom/press-releases/2024/1129-enhanced-safety-measures-for-higher-risk-machinery-and-combustible-dusts-from-1-january-2025>

ARTIFICIAL INTELLIGENCE & DATA SCIENCE



Artificial Intelligence (AI)

The current wave of interest and investment in artificial intelligence (AI) is characterised in part by a preference for business models that prioritise the collection and siloing of data. For companies taking this approach, access to data is seen as the key to securing a competitive advantage when building, implementing, and operating. We in EVERSAFE have taken number of steps to enhance the usage of AI through GEN AI to facilitate the regular work. It will be interesting to find out when AI started and how it has evolved over a period of time.

The Beginnings of Artificial Intelligence

The genesis of artificial intelligence using computers rose out of a workshop at Dartmouth in 1956. In the mid-1990s, the field of AI shifted from knowledge-driven machine learning (e.g., expert systems) to data-driven AI.

Fuelled by the exponential growth of data generated by computing devices and shared on the internet, researchers curated data for the development of machine learning algorithms. One significant effort was the development of the ImageNet data set that commenced in 2009 and took 2.5 years to label 3.2 million images.

The data set served as the foundation for the ImageNet computer vision competition that started in 2010. In 2012, Geoffrey Hinton and his team of researchers won the competition by a significant margin, and this result inspired the current AI boom. Their technique used neural networks that existed for decades. However, by applying neural networks with a large labelled data set and leveraging modern graphical processing units (GPUs), their work advanced the field.

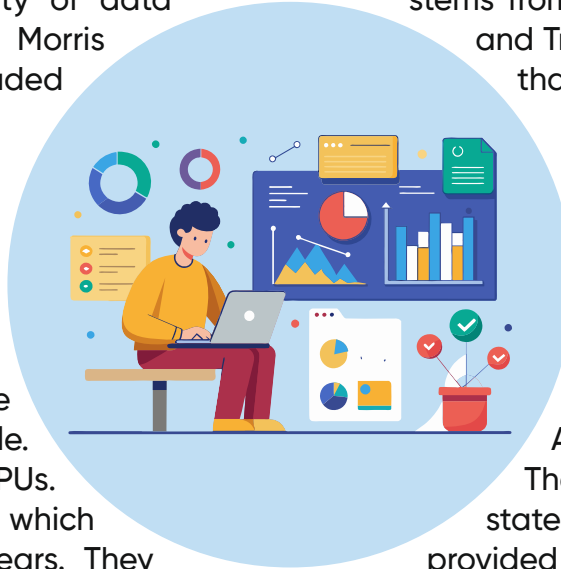
Another recent milestone was the demonstration of an AI agent beating a human in a computer game titled AlphaGo. The AI solution combined neural networks with reinforcement learning, which outperformed traditional Monte Carlo search techniques.

5. TECH BITES

Convergence of Data & Computing

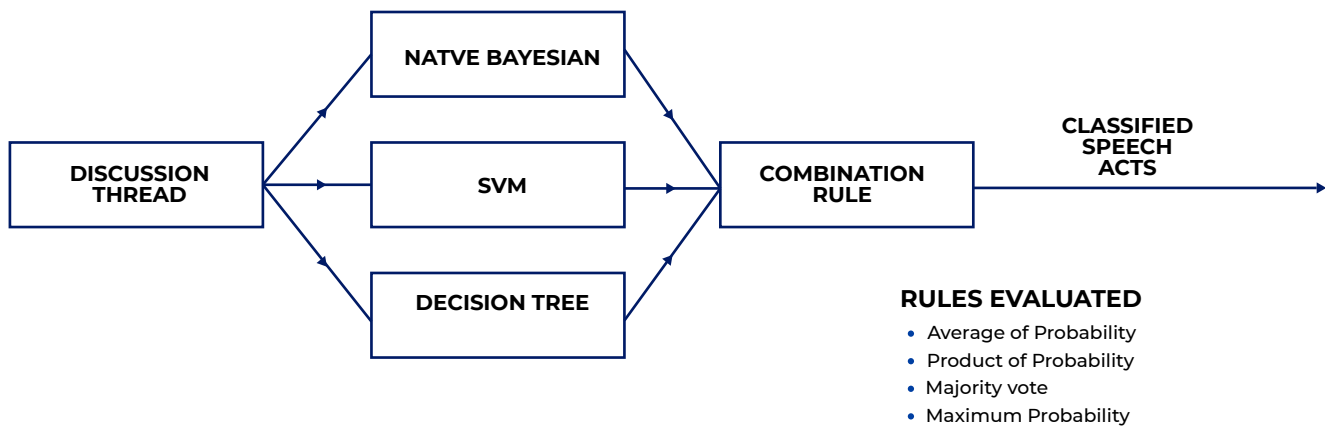
We experienced modern data resurgence through the availability of data and speed of computing. Understanding the availability of data stems from the reduction of the cost of computer memory. In 2003, Morris and Truskowski provided a history of storage systems and concluded that digital storage technology is cheaper than paper and film.

This trend led to an emerging field focused on processing data, with most of the data connected to the internet. He was referring to a large set of data that, at the time, was almost impossible to manage and process using the traditional business intelligence tools available. Another shift that occurred in computing was the rise of GPUs. The world of computing benefited from Moore's Law, which states that computer processing speeds double every two years. They provided high-speed polygon rendering and were optimized for mathematical processing instead of general-purpose computing.



field called "Big Data" that structured and unstructured data being created by devices. He was referring to a large set of data that, at the time, was almost impossible to manage and process using the traditional business intelligence tools available. Another shift that occurred in computing was the rise of GPUs. The world of computing benefited from Moore's Law, which states that computer processing speeds double every two years. They provided high-speed polygon rendering and were optimized for mathematical processing instead of general-purpose computing.

INTEGRATION OF AI & DATA ANALYTICS DEPICTED BELOW:



Data Science Today

Leveraging the advances in data storage, computing, and machine learning, data science emerged as a popular field. Practical applications of data science are broad reaching, to include marketing, fraud detection, logistics, crime prediction, social engagement, sports team management, and health care.

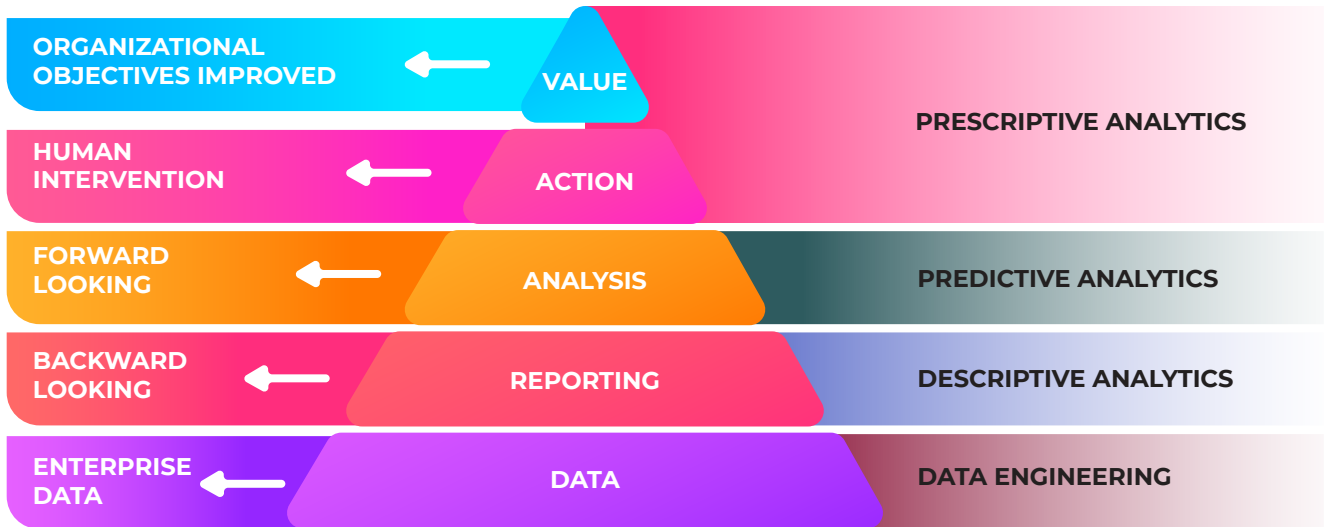
Data engineering can also be described as data wrangling, curation, or extract, transform, load (ETL). As previously mentioned, the reduced cost of memory has led to creation of enormous amounts of data. However, the data are often contained in disparate systems and are not well-suited for modern data science algorithms. In the discussion of machine learning, the data must be engineered to allow feature representations.

The evolution of Data Science had taken a quantum leap:

5. TECH BITES



Have a Great Year ★



Artificial Intelligence Today

With the boom of AI spawned by data-driven approaches using machine learning achieving human-level performance in pattern recognition research, the field seeks to move beyond pattern recognition and leverage a combination of data-driven and symbolic reasoning techniques. In the future, the progression of the field can be mapped by deriving four technical areas. These areas can be described as follows:

Autonomous Perception

- Systems that reason about their environment, focus on the critical aspects of the scene, understand the intent of humans and other machines, and learn through exploration.

Superhuman Decision-Making and Autonomous Action

- Systems that identify, evaluate, select, and execute effective courses of action with superhuman speed and accuracy for real-world challenges.

Human-Machine Teaming at the Speed of Thought

- Systems that understand human intent and work in collaboration with humans to perform tasks that are difficult or dangerous for humans to carry out with speed and accuracy.

Safe and Assured Operation

- Systems that are robust to real-world perturbation and resilient to adversarial attacks with ethical reasoning and goals that are guaranteed to remain aligned with human intent.

References:

Artificial Intelligence - Our World in Data
Artificial Intelligence - AI | UNESCO
What is the history of artificial intelligence (AI)? | Tableau

6. MOTIVATIONAL STORY



Have a Great Year ★

The Ant's Determination

One day, a young boy was sitting in his garden, feeling disheartened. He had failed in a school competition and believed he wasn't good enough to succeed. While sitting there, he noticed an ant carrying a crumb of food that was far larger than its tiny body. Curious, he began to watch the ant's journey.

The ant struggled to climb a small rock in its path, but the crumb slipped from its grip and tumbled down. Undeterred, the ant went back, picked up the crumb, and tried again. This happened over and over – the ant failing, but never giving up. The boy counted. The ant made over ten attempts before it finally succeeded in carrying the crumb over the rock.

Fascinated, the boy continued watching. The ant's path wasn't easy. It faced another obstacle—a stream of water. The ant paused and tried to find a way across. After several failed attempts, it found a small twig floating nearby. The ant climbed onto the twig, using it as a bridge to safely carry the crumb to the other side.

The boy was amazed. He thought about how the ant, despite its size, never gave up on its mission. It faced obstacles with patience, determination, and creativity, and it achieved its goal.

Inspired by the ant, the boy decided not to let his failure define him. He stood up, resolved to try again, and put his best effort into preparing for the next competition.

- **Persistence Pays Off:**

Like the ant, we may face repeated failures, but determination and effort will lead to success.

- **Adaptability is Key:**

The ant's ability to find alternative solutions shows us the importance of flexibility in problem-solving.

- **Small Actions Matter:**

Even the smallest efforts, when consistent, can achieve great things.



Adapted from the Original
Mr. Rambu Paul Dhinakaran G
(Senior Manager – HR)

7. OUR TRAINERS



Have a Great Year ★

Our MD Mr Murugesh presented the monthly
Trainer Excellence Pathway (TEP)



**CERTIFICATE OF APPRECIATION FOR
DECEMBER 2024'S EXEMPLAR TRAINER'S**



FULL TIME TRAINERS



**SELVARAJ
POTHIRAJ**



**ANWAR NIAZI
BIN MOHAMED**



**MOHAMED ALI
BIN TAIB**

ASSOCIATE TRAINERS



A B M MOHSIN



U HLA HTAY



**SUBRAMANIAN
SHANMUGANATHAN**



8. TESTIMONIALS (CLIENTS)



Have a Great Year ★

Endorsement of our Commitment to our Students and Customers, Some of the endorsements and feedback from our Valued Clients



Company name-M3 ENGINEERING & INTEGRATION SVCS
Company incharge-Mohan"
Course Incharge-Ms Jaya

We did had a great customer support from your end & really appreciate your assistance & support on this matter from Day one till the issuance of the e-certificate.

Company name-FULLHOUSE INTERIOR RENDER PTE. LTD
Company incharge-Jevylene
Course Incharge-Ms Reshma

Her ability to quickly understand our needs and provide a favorable resolution demonstrates her exceptional dedication and professionalism. Please keep up the excellent work.

Company name-ENCORE ENGINEERING PTE LTD
Company incharge-Ms. Sufiyanti Binte Sujono
Course Incharge-Ms Shenbagam

Excellent teamwork and collaboration! The Eversafe team has made our HR processes easier and more efficient. Looking forward to continuing this great working relationship!

Company name-LOVELY LANDSCAPE & CONSTRUCTION PTE LTD
Company incharge-kanmani
Course Incharge-Ms Anish

Her timely responses, clarifications, and proactive arrangements have been invaluable. The communication regarding the course was consistently clear and efficient.



8. TESTIMONIALS (INDIVIDUALS)



Have a Great Year ★



Endorsement of our Commitment to our Students and Customers, Some of the endorsements and feedback from our Valued Trainees



Student Name-POOMALAI RAJKUMAR
Course Name-level b student
Course Incharge-Ms Kaushalya

Excellent pace and use of time Well delivered,I was completely impressed with your customer their services.very good and professional services I enjoyed and found this course most helpful.

Student Name-HMAR LALBIAKTLUANGA
Course Name-Level b
Course incharge name-Ms Vimala

Your responses are timely, and you handle inquiries with professionalism and empathy. Your ability to actively listen and resolve issues efficiently greatly contributes to a positive experience.

Student Name-Aravindhan Rokesh
Course Name-level b
Course in charge -Vimala

Great job on handling that customer's issue quickly and professionally. Your positive attitude and willingness to go the extra mile for customers is appreciated.

Student Name-AYYAPPAN SELVI VINESH
Course Name-level b
Course incharge -Vimala

In my recent interaction with you. I was impressed with your quick response and appreciated your friendly and attentive service. Very helpful. Thank you for your excellent support!"



9. HEALTH & FITNESS PROGRAMMES



Have a Great Year ★

EVERSAFE ACADEMY HEALTH CHALLENGE RESULTS – DECEMBER 2024

We're thrilled to share the outstanding results from December's Eversafe Academy Health Challenge! This month, our community showcased exceptional dedication and energy, proving once again that consistency and determination are the keys to success.

Throughout December, participants focused on building daily habits, surpassing personal milestones, and embracing an active lifestyle. Every step taken contributed to not only physical health but also mental well-being, creating a positive ripple effect across our community.

DECEMBER CHAMPIONS:



PUNITHA

574,984 STEPS

SRINI

532,683 STEPS



SHENBAGAM

520,902 STEPS

A huge round of applause to Punitha, Srinu, and Shenbagam for their remarkable achievements! Your dedication and perseverance have set an inspiring example for us all.

As we step into the new year, let's carry forward this momentum, continue supporting one another, and make 2025 a year of even greater health milestones.

Cheers to all, and keep moving, Eversafe Academy!

8 WAYS TO REMAIN HEALTHY AND FIT



DON'T TOUCH

Keep your hands off any possible germ-infected surface



WASH UP

Proper hand washing is important to prevent from any germs



STOP STRESSING

Stress not only negatively affects your mental health but physical health too.



FUNDAMENTAL FLUIDS

Drink up! Downing 8-ounce glasses of water.



EAT WELL

Your food choices impact your immune system



ANTIOXIDANTS

Keeping you healthy are vitamin A, C and E



GET FIT

People who exercise regularly are less likely to get sick



SOUND SLEEP

Get the eight hours of sleep a night

11. FUN WITH PUZZLE & GAMES



VEHICULAR SAFETY QUIZ

1. What is the main legislation in Singapore governing workplace safety and health, including vehicular incidents?

- a) Workplace Safety and Health Act (WSHA)
- b) Employment Act
- c) Road Traffic Act
- d) Vehicle Maintenance Act

2. Which of the following is NOT a common cause of vehicular incidents at the workplace?

- a) Poor vehicle maintenance
- b) Lack of proper driver training
- c) Excessive speed limits
- d) Following safety protocols

3. What is a key responsibility of employers under the Workplace Safety and Health (WSH) Act regarding vehicular safety?

- a) Provide free transport for workers
- b) Ensure proper signage for vehicle routes
- c) Conduct regular fire drills
- d) Inspect vehicles only when there is an accident

4. When should a vehicular incident at the workplace be reported to the Ministry of Manpower (MOM)?

- a) Only if there are no injuries
- b) Only if a vehicle is damaged
- c) If it results in a death or major injury
- d) Within 30 days of any incident

11. FUN WITH PUZZLE & GAMES

5. Which type of training is crucial for preventing vehicular incidents in workplaces with heavy machinery or vehicles?

- a) Financial literacy training
- b) Fire safety training
- c) Defensive driving training
- d) First-aid training

6. What should be implemented to separate vehicle and pedestrian routes to minimize workplace accidents?

- a) Shared pathways
- b) Visual warning signs
- c) Physical barriers
- d) Increased speed limits

7. Under the WSH Act, who is responsible for ensuring that drivers operating workplace vehicles are properly trained and licensed?

- a) The employees
- b) The vehicle manufacturers
- c) The employers
- d) The government

8. What is the penalty for employers found guilty of failing to ensure vehicular safety at the workplace under the WSH Act?

- a) A fine of up to \$100,000
- b) A fine of up to \$10,000
- c) Imprisonment of up to 2 years
- d) Suspension of business license

9. Which of the following is NOT a recommended measure for reducing vehicular accidents at the workplace?

- a) Using speed limiters on vehicles
- b) Keeping maintenance logs for all vehicles
- c) Allowing unauthorized personnel to drive vehicles
- d) Installing reversing alarms

11. FUN WITH PUZZLE & GAMES

10. What is a recommended practice to enhance safety during vehicle reversing operations at a workplace?

- a) Relying solely on driver mirrors
- b) Assigning a guide or spotter to assist
- c) Reversing without sounding a horn
- d) Increasing vehicle speed to finish quickly

FILL YOUR ANSWERS IN THE TABLE BELOW:

QUESTIONS NO	ANSWER
1	
2	
3	
4	
5	
6	
7	
8	
9	
10	



SCAN QR CODE TO SUBMIT
YOUR COMPLETED
ANSWER

Please complete the Quiz answers and snap a picture to upload via our QR Code with your details for a chance to win prizes before 1st February 2025.

Prizes **1st** S\$50 **2nd** S\$40 **3rd** S\$30



RICHARD SIM
ACADEMIC MANAGER
EVERSAFE ACADEMY

LAST MONTH WINNERS



1st S\$50

**KHAM
JULY**



2nd S\$40

**DWARAPOODI
BRAHMAJI**



3rd S\$30

**MUNIYAMUTHU
MANIVEL**

12. SOCIAL MEDIA PRESENCE



Have a Great Year ★

EVERSAFE ACADEMY
REACH AND IMPRESSIONS
FOR DECEMBER 2024



SOCIAL
MEDIA
VIEWS

#741

MOBILE
APP
VIEWS

#30,142



YOUTUBE
IMPRESSION - 213



Eversafe Academy believes that creating awareness through Social Media can make a positive impact on the public and learning communities. Eversafe Academy has been producing helpful and informational videos on our YouTube Channel "Eversafe Academy".
Some of the recent videos posted on our channel are



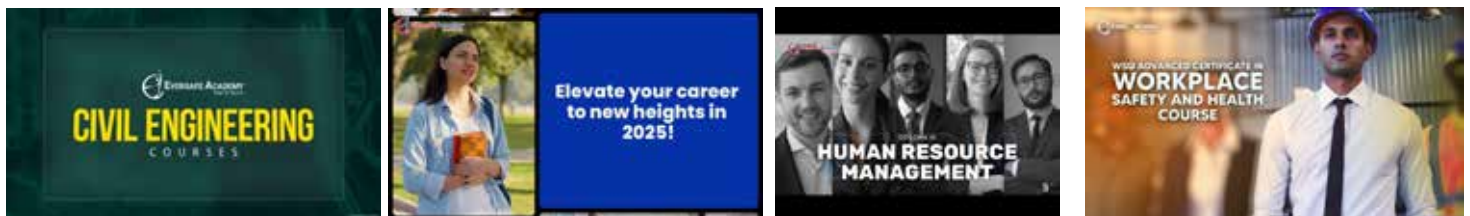
01. Student Testimonial Videos

Posting testimonial videos can be a great way to showcase positive experiences and feedback from the students by obtaining proper consent from them.



2. Course Informational Videos

Engaging videos with course information such as contents, duration of the course, fee, and other details, to encourage and promote learning in-demand skills and courses to improve career advancement chances for various industries.



3. General & Safety Videos:

In December 2024, Eversafe Academy shared videos about Christmas & New Year Special Classes, Safety Awareness, and 1-Year Diploma Courses for local and international students with flexible study options.



CORPORATE SOCIAL 13. RESPONSIBILITY - CSR EVENTS



Have a Great Year ★

1. We have planned to start the next batch for **FREE YOGA Classes** for migrant workers, and we are most pleased to share that there was a high demand for this type of FREE classes, which forms part of our Corporate Social Responsibility (CSR) service by Eversafe Academy for the migrant worker community.

UPCOMING CLASS DATE

- 8 Dec 2024
- 15 Dec 2024
- 22 Dec 2024
- 29 Dec 2024
- 5 Jan 2025
- 12 Jan 2025
- 19 Jan 2025
- 26 Jan 2025



Timing: 6 PM to 9 PM Location: Little India branch,
No 2, Kampong Kapor Rd, Singapore 208674

2. EA will be conducting **FREE Computer classes** on the below scheduled dates.

- 12th Jan 2025
- 19th Jan 2025
- 26th Jan 2025
- 09th Feb 2025
- 16th Feb 2025
- 23rd Feb 2025



Timing: 6 PM to 9 PM Location: Little India branch,
No 2, Kampong Kapor Rd, Singapore 208674

3. Eversafe Academy has planned to do an **Environmental Cleaning Activity** on 25th January 2025.



For more info

Call: +65 6297-8417 | WhatsApp: +65 9381 3608
www.eversafe.edu.sg | training@eversafe.com.sg

LATEST EA COURSES & 14. UPCOMING EVENTS

Eversafe Academy will soon launch the below list of new courses.

CERTIFICATE IN
Commercial Refrigeration Systems

ADVANCED CERTIFICATE IN
Commercial Refrigeration Systems



Eversafe Academy has planned to conduct workshop on "Emotional Intelligence" on 25th January 2025.



Safety committee meeting will be conducted at Joo Koon on fourth week of January 2025.



Eversafe Academy has planned to conduct Chinese New Year special classes on 29th, 30th and 31st January 2025, 1st February and 2nd February 2025.



15. EA SKY YOGA



Have a Great Year ★

EVERSAFE ACADEMY
SKY MEDITATION CENTRE

WCSC APPROVAL NO: WCSC/APP/SGP/054

SCIENCE OF UNIFIED LIVING

A revolutionary insight blending Ancient Indian Wisdom and Contemporary Science

[Join Now](#)



Scan QR to View Our Courses in detail.

Visit our website for more details:

www.eversafe.edu.sg/yoga-home

Our Featured Courses:

1. YOGA FOR HUMAN EXCELLENCE – FOUNDATION COURSE
2. KAYAKALPA YOGA
3. INTROSPECTION COURSE (I, II & III)
4. CHILDREN YOGA
5. CERTIFICATE IN YOGA FOR HUMAN EXCELLENCE (CYHE)
6. DIPLOMA IN YOGA FOR HUMAN EXCELLENCE (DYHE)



For more info

Call: +65 6297-8417 | WhatsApp: +65 9381 3608
www.eversafe.edu.sg | training@eversafe.com.sg

16. JOIN US



Have a Great Year ★



— The Position : —

- ▶ Network Executive
- ▶ Sales & Marketing Executive
- ▶ Diploma Teachers
- ▶ WSH Trainers



Email us your resume at
hrl@eversafe.com.sg

For more info contact:

Call: (+65) 9059 6339
| www.eversafe.edu.sg

**APPLY
NOW**

17. ABOUT EVERSAFE ACADEMY



Eversafe Academy is a well-established training institute providing innovative training to meet the needs of the adult learners and PMETs of Singapore and regionally. We are one of the well-known Training Providers in the WSH sector, with a team of highly experienced and dedicated safety professionals who are trained and capable in the implementation of workplace safety, corporate loss control and regulatory compliance. We have a group of experienced engineers. We shape the safety skill sets of workers, Supervisors and Managers to ensure that they have adequate knowledge to carry out their works safely. We also organize training for corporate companies.

We are also accredited with a 4-year EduTrust Accreditation quality standard mark as part of the recognition of our excellence in quality teaching and student experiences as a registered Private Education Institute.



2008

Year Established



150+

Courses



200+

Dedicated Staffs



1500+

Corporate Clients



WE HOPE YOU ENJOYED OUR
28TH ISSUE OF EA JOURNAL



For more information
visit - www.eversafe.edu.sg

Scan the QR
to read all our
Journal Issues





Island wide 4 Locations

LITTLE INDIA



No. 2, Kampong Kapur Rd,
Singapore 208674

JOO KOON



No. 2, Joo Koon Road,
Singapore 628966

PIONEER JUNCTION



No.3, Soon Lee Street, #04-14,
16,17, Pioneer Junction,
Singapore 627606

WAN LEE



No. 2, Wan Lee Road,
Singapore 627934

WE ARE
ALWAYS WITH YOU
FOR YOUR
TRAINING NEEDS

+65 6297 8417

+65 9381 3608

www.eversafe.edu.sg

training@eversafe.com.sg



TALK TO _____
OUR EXPERT!

Scan to Visit
Our Website

