



# EA JOURNAL

APRIL 2025 ISSUE #31

/EVERSAFE\_ACADEMY



SCAN QR CODE  
TO READ OUR  
ALL JOURNAL.



Responsive Design  
for All Devices!

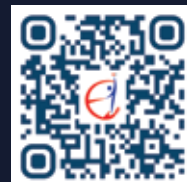
# TABLE OF CONTENTS

1. MD'S MESSAGE	-----
2. OUR ACHIEVEMENTS	-----
3. FEATURES & HIGHLIGHTS	-----
4. INDUSTRY NEWS & TRENDS	-----
5. TECH BITES	-----
6. MOTIVATIONAL STORY	-----
7. OUR TRAINERS	-----
8. TESTIMONIALS	-----
9. HEALTH & FITNESS PROGRAMMES (STAFF & STUDENT)	-----
10. HEALTH TIPS & STRATEGIES	-----
11. FUN WITH PUZZLE & GAMES	-----
12. SOCIAL MEDIA PRESENCE	-----
13. CORPORATE SOCIAL RESPONSIBILITY - CSR EVENTS	-----
14. LATEST EA COURSES & UPCOMING EVENTS	-----
15. EA SKY YOGA	-----
16. JOIN US	-----
17. ABOUT EVERS SAFE ACADEMY	-----

WE'LL KEEP YOU INFORMED WITH THE NEWEST  
FACTS AND KNOWLEDGE.  
PLEASE CONTINUE TO SUPPORT US.



SCAN THE QR  
TO READ OUR ALL  
JOURNAL ISSUES





*Dear Esteemed Readers,*

## WELCOME TO THE 31<sup>ST</sup> EDITION (APRIL 2025) OF THE EVERSAFE ACADEMY JOURNAL!

**A**s we step into the second quarter of 2025, I am proud to reflect on a month filled with meaningful initiatives, collaborative achievements, and continued progress in our journey towards excellence. April has been a vibrant period for Eversafe Academy, marked by special efforts that reinforce our mission of quality, inclusivity, and community engagement.

From celebrating festive traditions through flexible learning opportunities to successfully navigating critical audits and promoting social responsibility through a blood donation drive, each effort stands as a testament to the values we hold dear. As we also gear up to celebrate Labour Day, it is only fitting that we recognise the strength and spirit of our workforce—the very individuals who keep industries moving and communities thriving.

### 1. Hari Raya Special Classes

In celebration of Hari Raya, Eversafe Academy organized Special Classes aimed at supporting migrant workers who wished to make meaningful use of their festive holidays. Nearly 1,000 workers took part in this initiative, turning their holiday break into an opportunity for growth and upskilling.

This effort reflects our ongoing commitment to inclusivity and learner-centric flexibility. By offering tailored training options during festive periods, we not only empower our learners in their professional journeys but also honour and respect their cultural traditions. The overwhelmingly positive feedback received from participants underscores the importance of creating a responsive and respectful learning environment for all.



## 2. HTDP Audit – 26th March 2025

On 26th March 2025, we successfully completed the HazMat Transport Driver Permit (HTDP) Course Audit, conducted by Singapore Civil Defence Force (SCDF). This audit served as a vital milestone in ensuring our safety training programs remain aligned with evolving industry standards and regulatory requirements.

The audit team commended our commitment to quality, highlighting our practical, hands-on training approach, modern training facilities, and the expertise of our dedicated trainers. This achievement is a reflection of the collaborative efforts of all departments involved. I extend my sincere appreciation to the team for their hard work in upholding the high standards expected in this important assessment.



## 3. EduTrust Guided Interim Assessment (GIA) – 10th April 2025

The EduTrust Guided Interim Assessment (GIA), conducted on 10th April 2025, marked yet another significant milestone in our ongoing pursuit of academic quality and institutional excellence. The desktop submission was completed on 11th March, followed by the site assessment on 10th April.

This assessment provided valuable momentum for reflection and learning, giving us the opportunity to further strengthen the quality assurance framework across our operations and processes. It reaffirmed the importance of maintaining transparency, consistency, and a learner-focused approach in everything we do.

While we await the final outcome, we remain confident that the effort and preparation put forth speak volumes about our commitment to continuous improvement. My heartfelt thanks go to the EduTrust team and all staff members who dedicated themselves wholeheartedly to this audit assessment process.



## 4. Blood Donation Drive

Staying true to our values of social responsibility and compassion, Eversafe Academy organized a Blood Donation Drive in collaboration with the Red Cross Singapore on 22nd Mar 2025, inviting willing volunteers from among our students, staff, and well-wishers to step forward for this life-saving cause.

A total of seven participants were screened and found eligible to donate blood at the Red Cross Centre. Each donor received appreciation goodies from both the Red Cross and Eversafe Academy, and we proudly presented certificates of recognition to honour their selfless contribution.

It was truly heartening to witness our Eversafe community unite in support of such a meaningful cause. Initiatives like these serve as a powerful reminder that our commitment to safety and care extends far beyond the classroom—into the very heart of the communities we serve.



## 5. Labour Day – Honouring Our Workforce

As we approach Labour Day, we take a moment to honour the hands and hearts that build our communities—our workforce. At Eversafe Academy, our training efforts are focused on empowering workers with the skills they need to stay safe, competent, and confident. We also take this opportunity to thank our dedicated staff, trainers, and operational team, whose unwavering commitment makes Eversafe Academy a pillar of quality excellence in safety education.

### CONCLUSION:

April has reminded us of the power of unity, dedication, and compassion—values that continue to shape our direction at Eversafe Academy. I extend my heartfelt gratitude to all our staff, trainers, partners, and students who have contributed to our successes this month.

As we move forward, let us carry the same spirit of resilience and purpose into the months ahead. Together, we will continue to uphold our commitment to delivering quality education, promoting workplace safety, and making a positive impact on society.



WARM REGARDS  
**R. MURUGESH**  
(MANAGING DIRECTOR)  
EVERSAFE ACADEMY PTE LTD

**WISHING YOU CONTINUED SUCCESS, HEALTH, AND JOY.**



**WE HAVE SUCCESSFULLY  
TRAINED AND GRADUATED**

**857,569+**

**STUDENTS AS OF MARCH - 2025**



[www.eversafe.edu.sg](http://www.eversafe.edu.sg)

## 1. EA Safety Committee Members Meeting

Our EA Safety Committee was created comprising of EA Management and selected highly experienced WSH Trainers with a focus on the daily safety surveillance and safety reviews of our 4 training branches. March month meeting was conducted on 28th March 2025 at our Little India location.

The meeting was headed by our Managing Director Mr. Murugesh along with the 11 other members.



2.

Eversafe Academy conducted workshop on "Communication Skills at workplace- challenges and solution" on 29th March 2025 with 61 members.



3.

Eversafe Academy had conducted "Free Yoga Class" on March month, 6 Students got benefited.



4.

Eversafe Academy had conducted "Free Computer Class" on March month, 5 Students got benefited.



# 5.

Eversafe Academy conducted Hari Raya Puasa special classes on 29th March 2025, 30th March 2025 and 31st March 2025 many students got benefited.



# 6.

Eversafe Academy organized a Blood Donation Drive in collaboration with the Red Cross Singapore on 22nd Mar 2025, 7 participants found eligible to donate blood.

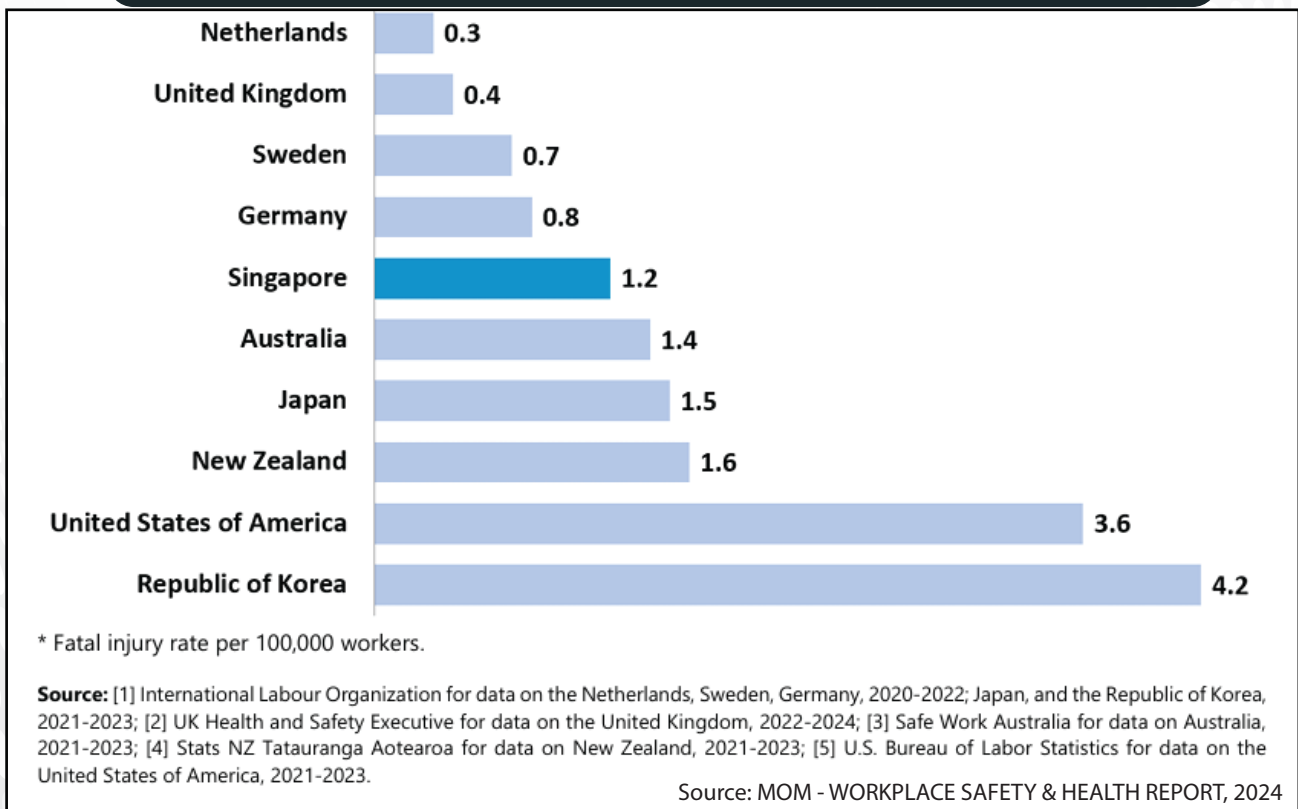


# Singapore's Workplace Safety and Health Performance in 2024

## Introduction:

In 2024, Singapore's commitment to Workplace Safety and Health (WSH) continued to show positive results, with a strong focus on reducing injuries. Despite challenges in sectors like Construction and Marine, significant improvements were made, including safety enhancements in smaller-scale works. However, the slight increase in fatal injuries, particularly in high-risk industries, signals the need for continuous vigilance and stricter enforcement of safety measures. The findings underscore both progress and the ongoing efforts required to address sector-specific safety risks and ensure the overall well-being of workers.

International comparison of workplace fatal injury rate\* (3-year average)



**Overall Workplace Safety and Health Performance**

Singapore’s WSH performance in 2024 remained commendable, with several key statistics reflecting continued improvements in workplace safety. The country recorded a total of 22,157 reported injuries in 2024, a 2.8% reduction from the previous year. The overall injury rate decreased by 3.5%, from 623 injuries per 100,000 workers in 2023 to 601 in 2024. This overall improvement can be attributed to proactive safety initiatives, stronger enforcement, and a collective effort from both government bodies and businesses to enhance safety culture.

**Number of workplace injuries, dangerous occurrences and occupational diseases, 2023-2024**

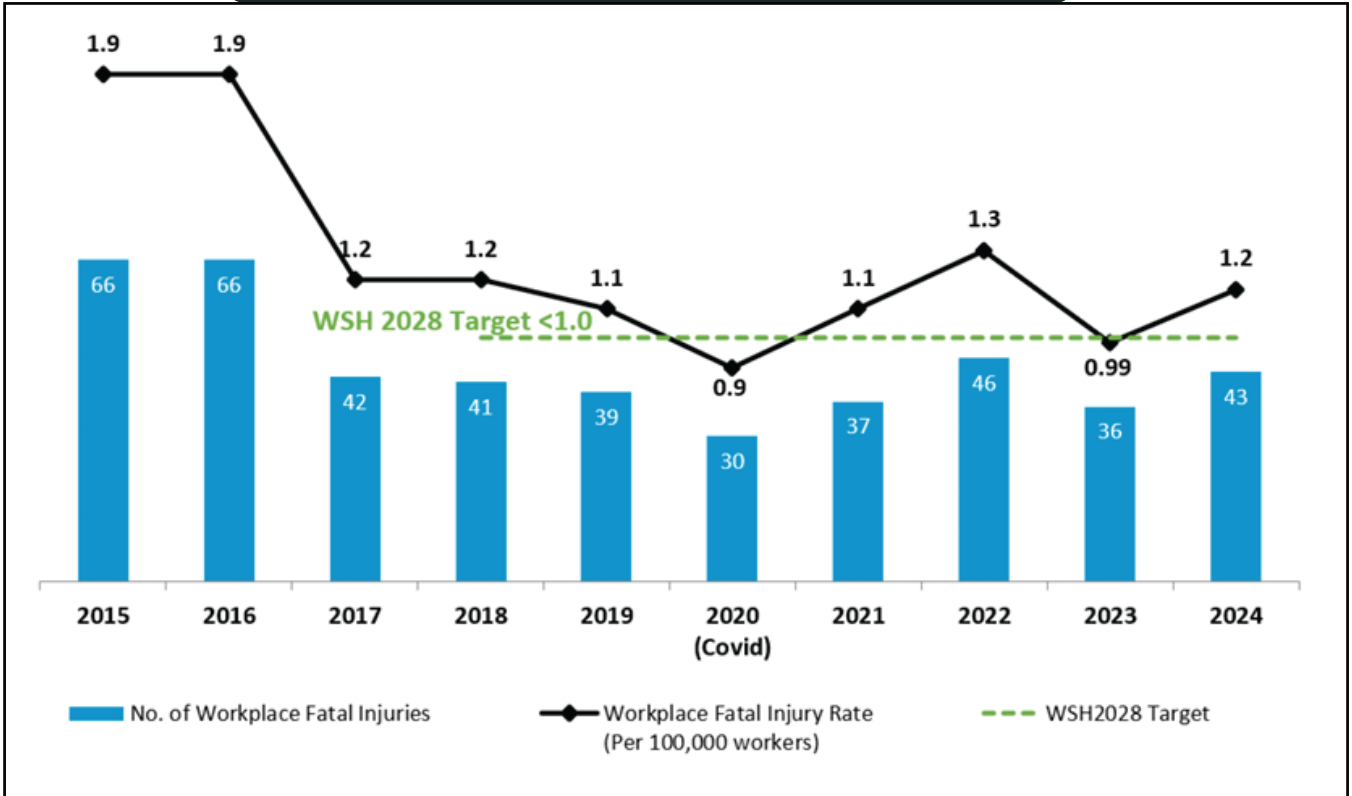
	2023			2024		
	Type A	Type B	Overall	Type A	Type B	Overall
<b>Total Workplace Injuries</b>	<b>4,024</b>	<b>8,915</b>	<b>12,939</b>	<b>3,783</b>	<b>8,273</b>	<b>12,056</b>
<b>(Total Injuries [N]<sup>3</sup>)</b>	<b>(6,765)</b>	<b>(16,022)</b>	<b>(22,787)</b>	<b>(6,389)</b>	<b>(15,768)</b>	<b>(22,157)</b>
Fatal Injuries	29	7	36	38	5	43
(from WRTA)	(4)	(n.a.)	(4)	(4)	(n.a.)	(4)
Major Injuries <sup>4</sup>	203	381	584	211	372	583
(Major Injuries [N])	(205)	(385)	(590)	(211)	(376)	(587)
Minor Injuries <sup>4</sup>	3,792	8,527	12,319	3,534	7,896	11,430
(Minor Injuries [N])	(6,531)	(15,630)	(22,161)	(6,140)	(15,387)	(21,527)
<b>Dangerous Occurrences</b>			<b>19</b>			<b>19</b>
<b>Occupational Diseases</b>			<b>1,229</b>			<b>899</b>

Source: MOM - WORKPLACE SAFETY & HEALTH REPORT, 2024

However, the workplace fatality rate increased in 2024 to 1.2 per 100,000 workers, up from 0.99 in 2023. The increase was attributed to more fatalities occurring in high-risk industries such as Construction and Marine. Despite this uptick, Singapore’s workplace fatality rate remains relatively low compared to global standards, with only four OECD countries consistently maintaining a rate of less than 1.0 fatality per 100,000 workers.



Number and rate of workplace fatal injuries, 2015-2024



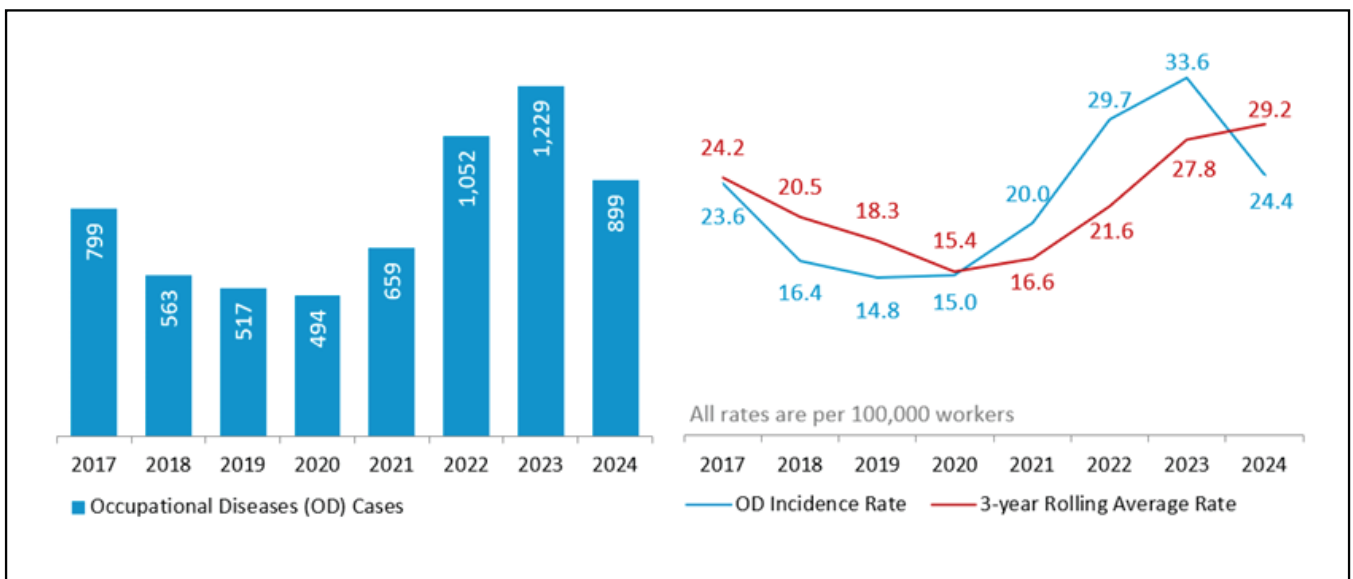
Source: MOM - WORKPLACE SAFETY & HEALTH REPORT, 2024

## Sectoral Performance and Trends

In 2024, the Construction industry remained a major contributor to workplace injuries, accounting for 26% of fatalities and 20% of major injuries. While its injury rate slightly decreased from 31.9 to 31.0 per 100,000 workers, larger-scale sites saw more incidents, highlighting the need for continued enforcement. The Manufacturing sector showed notable improvement, with the injury rate dropping from 36.3 to 29.3, especially in Metalworking and Food & Beverages. The Marine industry, despite a small workforce, saw a rise in injury rates from 35.3 to 35.8 and recorded fatalities for the first time, stressing the need for stronger safety practices. The Transportation & Storage sector improved slightly, with its injury rate falling from 20.4 to 18.4, though ongoing safety efforts remain necessary.

### Occupational Diseases (OD)

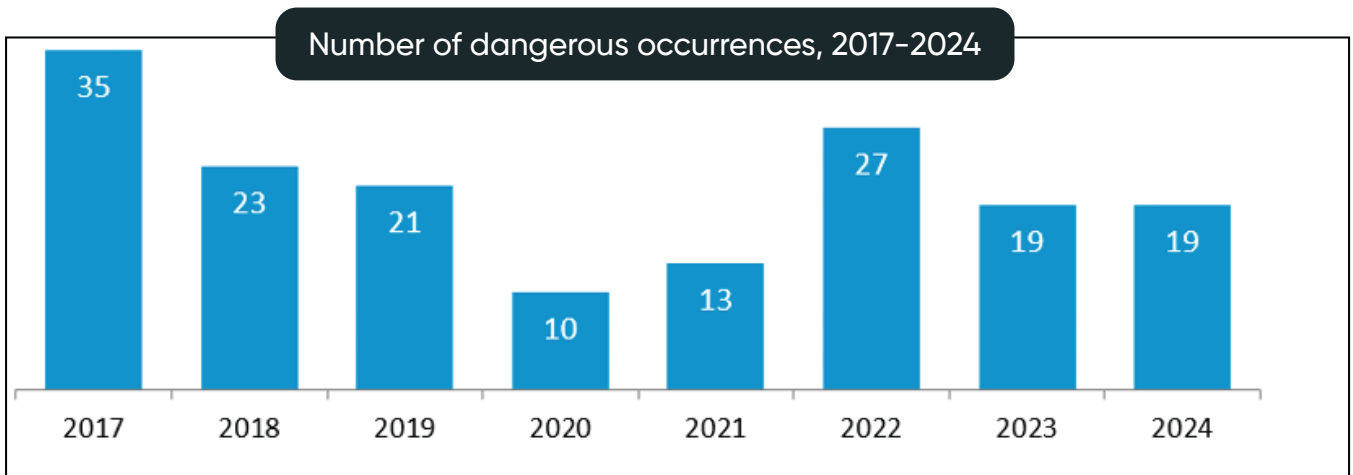
In 2024, Singapore saw a decrease in the number of diagnosed Occupational Diseases (OD), with 899 cases reported compared to 1,229 in 2023. This decline is attributed to the reduction in noise-induced deafness (NID) cases, which had been one of the leading occupational diseases in previous years. Noise-induced deafness remains the leading OD in 2024, with 519 reported cases, followed by Work-related Musculoskeletal Disorders (WRMSD) with 249 cases.



The decrease in OD cases can be attributed to ongoing Enhanced Workplace Health Surveillance (WHS+) efforts and increased awareness of occupational health risks, encouraging both employers and employees to be more vigilant in reporting and addressing health hazards.

### Dangerous Occurrences (DO)

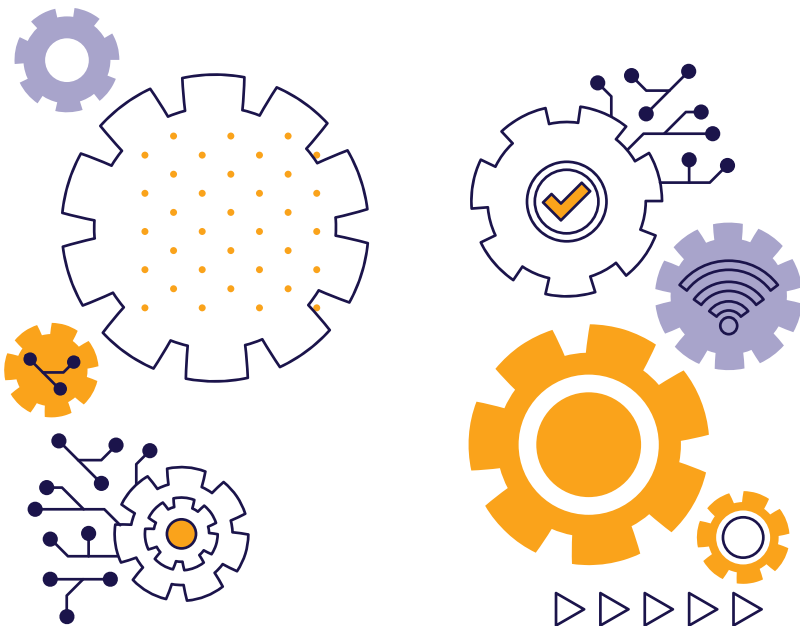
There were 19 dangerous occurrences (DO) reported in 2024, the same number as in 2023. These events, often involving the collapse or failure of structures and equipment, are a critical focus for the WSH Council and other regulatory bodies.



The majority of DOs continue to occur in the Construction and Manufacturing sectors, indicating that more rigorous safety checks, maintenance practices, and structural integrity inspections are necessary to prevent such incidents.

## Conclusion

Singapore's WSH performance in 2024 shows progress in reducing workplace injuries, though challenges persist in the Construction, Manufacturing, and Marine industries with high injury rates. The increase in fatalities underscores the need for continued vigilance and enforcement. Positive developments include a decrease in occupational diseases, particularly NID cases, due to improved surveillance and awareness, but further efforts are needed to address hazardous conditions like noise exposure and ergonomic risks.



**Thanikachalam Rameshkumar**  
Head – Academic Department  
Eversafe Academy

## References:

- <https://www.mom.gov.sg/-/media/mom/documents/safety-health/reports-stats/wsh-national-statistics/wsh-national-stats-2024.pdf>
- <https://www.mom.gov.sg/workplace-safety-and-health/wsh-reports-and-statistics>

# Unlocking ESG Opportunities:

## Explore How ESG Impacts Business Value

### Introduction:

The coronavirus pandemic accelerates the interconnectedness between sustainability and the financial market, with responsible investing being on the trajectory to the mainstream.

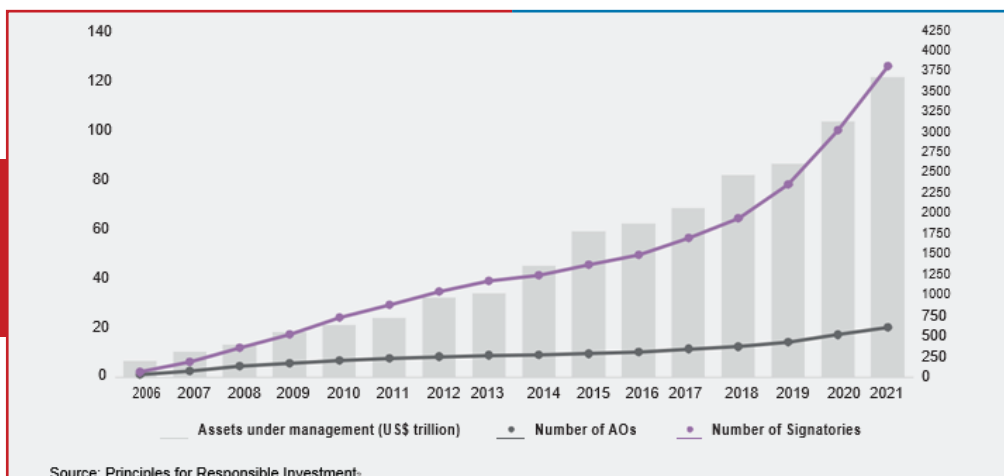
Experiencing the high vulnerability of the economy to global crises and social unrest, investors are proactively incorporating Environment, Social and Governance (ESG) factors into their investment analysis to gain a more holistic view of companies' material risks, expected growth opportunities, and profit margin.



### B. The Importance of ESG Valuation

Supported by the United Nations, the Principles for Responsible Investment (PRI) is dedicated to promoting the incorporation of ESG issues into investment practice and companies' ownership policies.

As of March 2021, the number of signatories increased 26% to an accumulation of over 3,800 entities, with the assets under management reached US\$121.3 trillion, a growth rate of 17% that is expected to keep escalating.



In the Perspective Paper: ESG and Business Valuation<sup>3</sup>, the International Valuation Standards Council (IVSC) has also shed light on the unprecedented-low interest rate witnessed in the wake of the 2020 economic crisis. As the interest rate is negatively related to the present value of future cash flows, and the longer-lasting period will further enhance the present value, one can expect that the low interest rate shall foster a long-term investment strategy, resulting in a greater importance of the ESG framework.

With multiple studies suggesting that ESG and corporate performance are intrinsically intertwined, a strong

ESG proposition could be an indicator of safeguarding investors' long-term success.

However, from a valuation perspective, traditional business valuation approaches are more inclined to financial indicators and metrics, neglecting the ESG impacts on long-term value creation or degradation. Hence, an ESG-integrated valuation model which can systematically value a company by considering different scenarios and outcomes may benefit investors from developing a rounded-out investment and optimizing the risk-return characteristics.



## C. Relationship between ESG and Business Valuation

### Selection of Material ESG Factors

Assessing the ESG materiality is the starting point for incorporating ESG factors into the valuation model. With the subjective nature of ESG considerations and adjustments, identifying material ESG factors is vital to justify the related adjustments and circumvent ambiguity. Meanwhile, the materiality of individual ESG factors could be both industry-specific and company-specific, which have to be assessed on a case-by-case basis. Materiality is measured according to the likelihood and magnitude of impact. According to the CFA Institute, non-material ESG factors do not impact financials and valuations. Some factors will

have financial impact in long run, either positive or negative. Thus, materiality assessment is important for incorporating ESG factors into business valuation.

Take the MSCI's benchmarking pillars for the Real Estate Development industry and Oil and Gas Drilling industry as an illustration. Looking into their comparison, the two industries face distinct ESG issues in each pillar with different weighting on importance, benchmarking with industrial peers. For example, real estate developers emphasize the opportunities in green building while oil and gas drilling companies focus on curbing the carbon emissions issue.



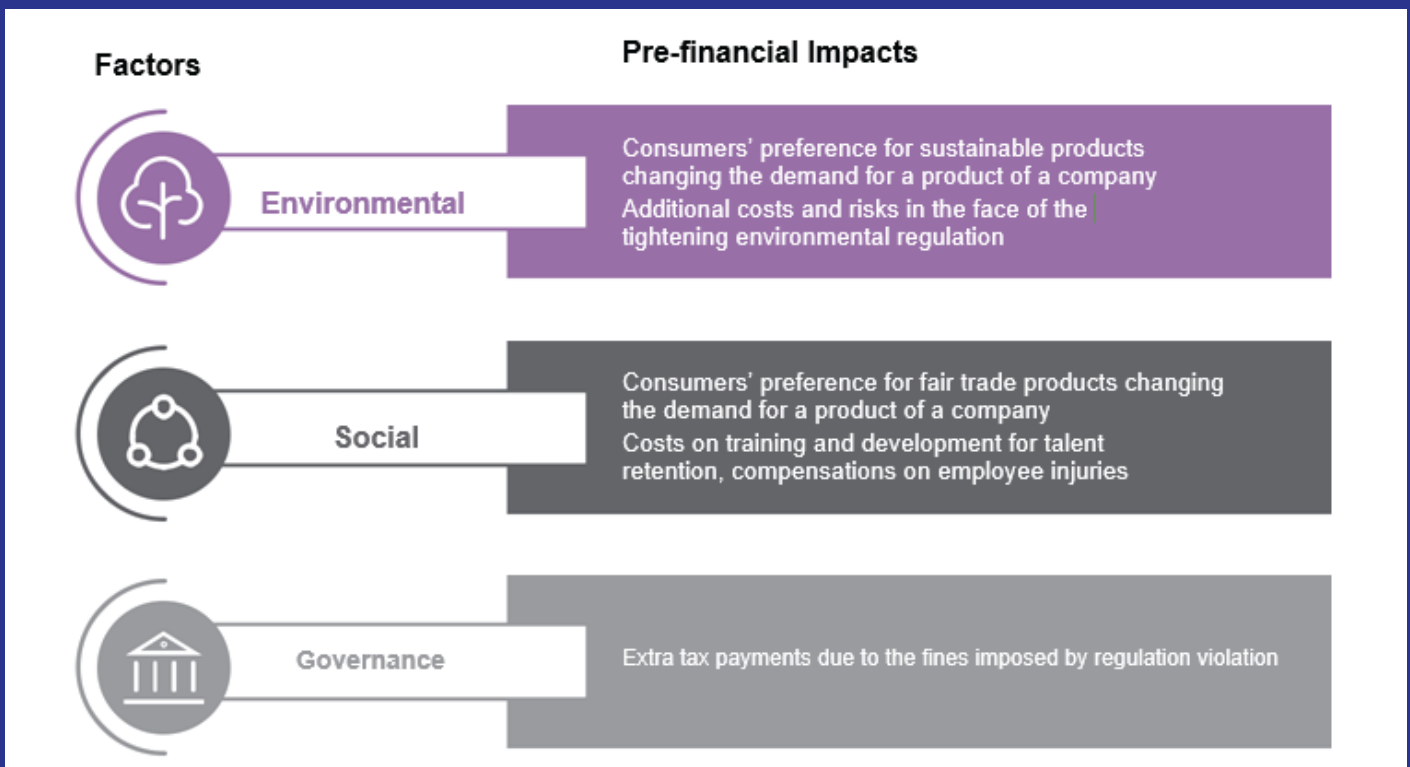
### Real Estate Development

### Oil & Gas Drilling

Pillars	Issues	Average Weight	Issues	Average Weight
Environmental	Opportunities in Green Building	29.8%	Carbon Emissions	14.1%
	Water Stress	0.3%	Biodiversity & Land Use	13.2%
Social	Health & Safety	18.3%	Toxic Emissions & Waste	9.8%
	Product Safety & Quality	0.2%	Health & Safety	16.7%
Governance	Governance	42.5%	Community Relations	13.2%
			Governance	33%

Sources: MSCI.

## D. Pre-Financial" or Non-Financial Information



ESG does have a positive financial impact and affects the intrinsic value of the business. Failure in recognizing the ESG impact might create a gap between financial performance and the market value, resulting in the accumulation of unrecorded intangible assets and disproportionate long-term value prospects.



Adapted from the Original

**MANGALAM KALYANAKRISHNAN RAMASWAMY**

(Internal Advisor), Eversafe Academy Pte Ltd.

**References:**

Unlocking ESG Opportunities: Explore How ESG Impacts Business Value - Harvard University  
Co Author: PETER CLARE



# LIFE AS THOUGHT



Once in a quiet village nestled between green hills, lived a potter. Every morning, he would wake up early, shape clay with his hands, and hum a peaceful tune as he worked. His pots weren't the fanciest, but they always sold quickly. People loved buying from him—not just because of his work, but because of the smile he wore and the kindness he spread.

One day, a young man from the city visited the village. He was stressed, angry with life, and worn out from chasing success. While walking through the village market, he saw Potter peacefully shaping clay. Curious, Young man asked, "How are you always this calm and happy? Don't you ever worry about money, customers, or life problems?"

Potter smiled and pointed to a row of pots. "These pots," he said, "are just like thoughts. If the clay is clean and shaped with care, the pot becomes useful and beautiful. But if I work with dirty or cracked clay, the pot will break."

## MORAL

**YOUR THOUGHTS SHAPE YOUR LIFE. GOOD THOUGHTS LEAD TO PEACE, PROGRESS, AND HAPPINESS. CHOOSE THEM DAILY, AND WATCH YOUR LIFE TRANSFORM.**

Young man was puzzled. "And what does that have to do with being happy?"

Potter wiped his hands and replied, "Our life is shaped by our thoughts. If our mind is full of anger, fear, or negativity, our life will reflect that. But if we feed it with gratitude, hope, and kindness, our life becomes peaceful, just like a well-made pot. I choose good thoughts every morning, just like I choose clean clay."

Young man sat silently, watching Potter's work. That day, he didn't buy a pot—but he left with something far more valuable: a new way to think.

Years later, The Young man returned to the village, not as a tired young man, but as a successful, peaceful one. He had started his day with good thoughts ever since, and life, like the pot, had taken a beautiful shape.



Adapted from the Original  
Rambu Paul Dhinakaran G  
Senior Manager – Human Resources

## OUR MD MR MURUGESH PRESENTED THE MONTHLY TRAINER EXCELLENCE PATHWAY (TEP)

CERTIFICATE OF APPRECIATION FOR MARCH 2025 EXEMPLAR TRAINER'S

### FULL TIME TRAINERS



**SELVARAJ POTHIRAJ**



**PRINCETON  
SINCLAIR PETER**



**LAKSHMANAN  
SATHISH BABU**

### ASSOCIATE TRAINERS



**JOHN MOHAN  
DURAISANGAM**



**NAVANEEDHAN  
RAVI SANKAR**



**THEVANTHIRAN  
SINNATHAMBI**

**Great  
JOB**

**Endorsement of our Commitment to our Students and Customers,  
 Some of the endorsements and feedback from our Valued Clients!**



Company name-PQ Swiftvan Logistics Pte Ltd  
 Company incharge-Sheena  
 Course Incharge-Ms vimala

**01** On behalf of PQ Builders Pte Ltd, I would like to extend our sincere thanks for your guidance and support in booking courses and arranging them immediately with earlier slots. We greatly appreciate your prompt assistance and efficient handling of our requests.



Company name-GP Landscape Construction  
 Company incharge-damien poh  
 Course Incharge-Ms vimala



**02** I recently signed up for a basic computer course for my worker and was thoroughly impressed by the exceptional customer service and responsiveness provided by Vimala.

Company name-MTRS ENGINEERING & CONSTRUCTIONS PTE LTD  
 Company incharge-Mohan Aravinth  
 Course Incharge-Ms Shenbagam

**03** I would like to express my appreciation for Eversafe Academy. The institute provides an excellent learning environment, and the staff members are both knowledgeable and courteous.



Company name-TCH Cleaning & Construction Pte Ltd  
 Company incharge-Foo Chow Chek  
 Course Incharge-Ms Nivethitha




**04** I am currently register the Diploma in civil engineering course.Really appreciate Ms Nivethitha. P for being patient and supportive with me during the course registration - especially in course details explanation. And also thank you for the fast response!

Endorsement of our Commitment to our Students and Customers,  
Some of the endorsements and feedback from our Valued Students!




Student Name-Ahammed Kawsar  
Course Name-level b student  
Course Incharge-Ms Kaushalya

**01**  I am happy and satisfied with your service.Please,Keep continue your service like this.




Student Name-Prabu Uma  
Course Name-level b student  
Course Incharge-Ms Kaushalya

**02**  "I had a wonderful experience with Eversafe Academy's Level B Safety Coordinator Course. The customer service was top-notch, with prompt and helpful responses to all my queries. The course material was comprehensive, and the instructors were knowledgeable and supportive."




Student Name-Mostufa Kamal  
Course Name-MWAH  
Course in charge —Ms shenbagam

**03**  I am really thankful that I have got YOUR services, & your services are so good & I would like to thanks all the teachers.



Student Name-Hosen Md Rashel  
Course Name-level b  
Course incharge -Ms kaushalya

**04**  I would like to inform that. I'm Hosen Md Rashel. I'm completed safety coordinator course from Eversafe Academy. I have like to thanks all of staff specially MS Kaushalya Mam. She quickly response. Customer service is very good.



## Eversafe Academy Health Challenge Results – March 2025

Hey, Eversafe Academy Family!

Another month down, and the step game is still going strong! March may have brought us warm weather and tempting snacks, but our step champions stayed laser-focused.



**Shenbagam – 578,023 steps**

(We're starting to suspect this person might be part machine!)



**Veerammadevi – 564,667 steps**

(Probably walking marathons without telling us.)



**Ezhilmathi – 546,791 steps**

(Always in motion—and clearly loving it!)



**stay strong and keep stepping,  
Eversafe Academy!**

A big round of applause to our top movers! You're setting the bar high and the step count even higher.

Let's carry that momentum into April. Lace up, step out, and keep proving that health is a journey—one step at a time.





# CLEAR SKIN DETOX WATER



Drinking plenty of water and staying hydrated is vital for your health in every aspect. In fact, you need enough water in your body for proper digestion, organ function, healthy bowels, and healthy bones and muscles, just to name a few. Staying hydrated is important for weight loss and weight maintenance, too. And while there's nothing wrong with drinking plain water, many people opt to incorporate detox waters into their daily routine—meaning, they add fruits, vegetables, herbs, or spices to their regular glass of water to rev it up.

Water by itself can keep you hydrated, and drinking enough throughout the day can help your body burn fat and lose weight. Research has shown that water can do this by helping to increase your metabolism, reduce appetite, and improve digestion to keep you regular. So when you add extra ingredients to your regular water in the form of fruit or herbs, you're just adding more potential health benefits to your glass.

However, it's important to understand what detox water is and what it isn't. It can be a simple, affordable way to stay hydrated and add helpful vitamins and minerals, which in turn can contribute to your overall fat-burning goals. What it isn't is a "quick fix" or dietary cleanse that can speed up the process in which your body naturally gets rid of toxins. It's also worth noting that if adding a little flavor makes you more likely to drink water throughout the day, that's a benefit in and of itself.

So if you're looking for some tasty ways to get more vitamins, minerals, and nutrients that help you burn fat and lose weight, try one of the detox water ideas below.

## METAL WORKING SAFETY QUIZ

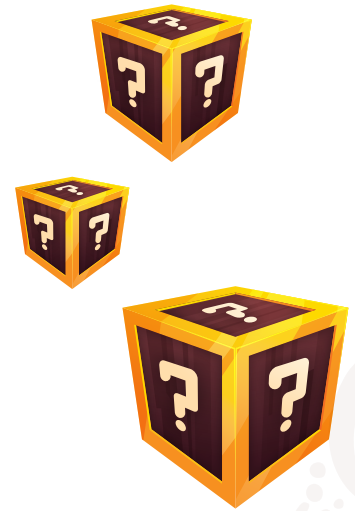


1. Before handling any chemical, employees should always consult the \_\_\_\_\_ to understand the hazards and safe handling procedures.
2. Chemicals should be stored in \_\_\_\_\_ containers to prevent leaks and spills.
3. Personal Protective Equipment (PPE) such as \_\_\_\_\_ must be worn when handling hazardous chemicals.
4. In case of a chemical spill, the first action is to alert \_\_\_\_\_ and follow the spill response procedure.
5. To avoid accidental exposure, employees should never eat, drink, or \_\_\_\_\_ in areas where hazardous chemicals are used.
6. Hazardous chemicals should be disposed of according to the \_\_\_\_\_ regulations and procedures.
7. \_\_\_\_\_ should be conducted regularly to ensure that employees are aware of the correct procedures for handling hazardous chemicals.
8. In Singapore, hazardous chemicals must be labelled in accordance with the \_\_\_\_\_ system to ensure proper identification of hazards.
9. In the event of skin contact with a hazardous chemical, the affected area should be flushed with \_\_\_\_\_ immediately.
10. When transporting hazardous chemicals within the workplace, they should be carried in \_\_\_\_\_ to prevent spills or exposure.



Please pick from the list of suggested answer for each question:

Question No	Answer
A	Smoke
B	Safety training
C	Water
D	Supervisors or emergency response personnel
E	National Environment Agency (NEA)
F	Properly labelled
G	Globally Harmonized System (GHS)
H	Secondary containment or safety carriers
I	Gloves, goggles, masks, or protective clothing
J	Safety Data Sheet (SDS)



Fill your answers (A to J) in the table below:

Question No	Answer
1	
2	
3	
4	
5	
6	
7	
8	
9	
10	



QUIZ DEVELOPED BY  
**RICHARD SIM**  
ACADEMIC MANAGER  
EVERSAFE ACADEMY

**Prizes**

- 1<sup>st</sup> S\$50
- 2<sup>nd</sup> S\$40
- 3<sup>rd</sup> S\$30



**SCAN QR CODE TO SUBMIT YOUR COMPLETED  
MATCHING SAFETY CROSSWORD PUZZLE**

Please complete the matching puzzle for hazard signages and snap a picture to upload via our QR Code with your details for a chance to win prizes before 1st May 2025.

**LAST MONTH WINNERS (MARCH)**



1<sup>st</sup> S\$50

**SELLASAMY  
VINOTH**



2<sup>nd</sup> S\$40

**MUNIYAMUTHU  
MANIVEL**

# Eversafe Academy reach and Impressions for March 2025



SOCIAL MEDIA VIEWS

**#1465**

MOBILE APP VIEWS

**#31,785**



YOUTUBE IMPRESSION - 741

Eversafe Academy believes that creating awareness through Social Media can make a positive impact on the public and learning communities. Eversafe Academy has been producing helpful and informational videos on our YouTube Channel "Eversafe Academy".  
*Some of the recent videos posted on our channel are*

SCAN TO SUBSCRIBE

SCAN TO SUBSCRIBE

## 01. Student Testimonial Videos

Posting testimonial videos can be a great way to showcase positive experiences and feedback from the students by obtaining proper consent from them.



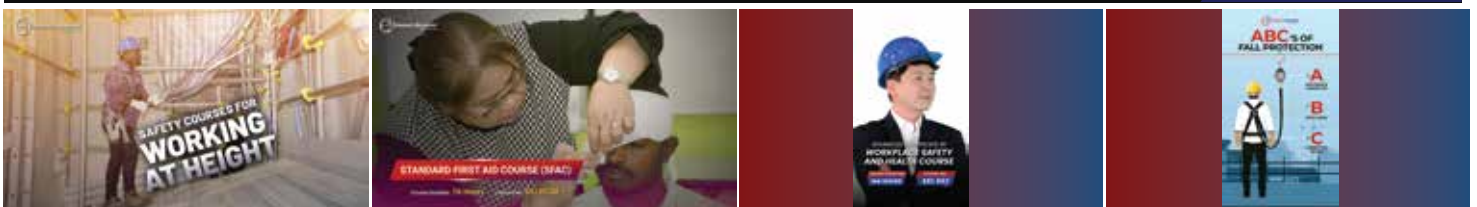
## 2. Course Informational Videos

Engaging videos with course information such as contents, duration of the course, fee, and other details, to encourage and promote learning in-demand skills and courses to improve career advancement chances for various industries.

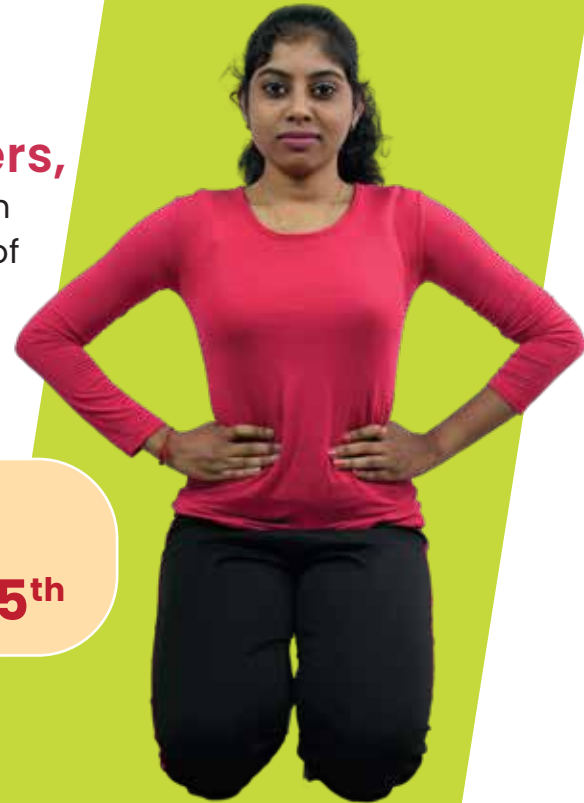


## 3. General & Safety Videos:

In February 2025, we posted videos highlighting our safety training, introduced a new course called Diploma in Logistics & Supply Chain Management (DLSCM), and provided a detailed explanatory video on the Manage Work at Height (MWAH) course.



1. We have planned to start the next batch for **Free Yoga Classes for Migrant Workers**, and we are most pleased to share that there was a high demand for this type of FREE classes, which forms part of our Corporate Social Responsibility (CSR) service by Eversafe Academy for the migrant worker community.



**UPCOMING CLASSES**

April 2025

**6<sup>th</sup> 13<sup>th</sup> 20<sup>th</sup> 27<sup>th</sup>**

May 2024

**4<sup>th</sup> 11<sup>th</sup> 18<sup>th</sup> 25<sup>th</sup>**

**Timing:** 6 PM to 9.45 PM **Location:** Little India branch,  
#2, Kampong Kapor Rd, Singapore 208674

2. EA will be conducting **FREE COMPUTER Classes** on the below scheduled dates.

**UPCOMING CLASSES**

- 13th April 2025
- 20th April 2025
- 27th April 2025
- 4th May 2025
- 11th May 2025



**Timing:** 6 PM to 9.45 PM **Location:** Little India branch,  
#2, Kampong Kapor Rd, Singapore 208674

**BOOK  
NOW**

## Eversafe Academy will be soon launching the below new Course:



### 1. CERT REFRESHER TRAINING (CRT-TIER 2 & 3)

## UPCOMING EVENTS

1. Eversafe Academy has planned to conduct workshop on "Customer Handling Skills" on 26th April 2025.



2. Safety committee meeting will be conducted at Wan Lee on 16th April 2025.



3. Eversafe Academy has planned to conduct Good Friday special classes on 18th April 2025, 19th April 2025 and 20th April 2025.



4. Eversafe Academy has planned to conducted Freshers Day meet on 16th April 2025.



**EVERSAFE ACADEMY  
SKY MEDITATION CENTRE**

WCSC APPROVAL NO: WCSC/APP/SGP/054

**SCIENCE OF  
UNIFIED LIVING**

A revolutionary insight blending Ancient Indian Wisdom  
and Contemporary Science

Join Now



Scan QR to  
View Our  
Courses  
in detail.

Visit our website for more details:

[www.eversafe.edu.sg/yoga-home](http://www.eversafe.edu.sg/yoga-home)

## Our Featured Courses:

1. YOGA FOR HUMAN EXCELLENCE – FOUNDATION COURSE
2. KAYAKALPA YOGA
3. INTROSPECTION COURSE (I, II & III)
4. CHILDREN YOGA
5. CERTIFICATE IN YOGA FOR HUMAN EXCELLENCE (CYHE)
6. DIPLOMA IN YOGA FOR HUMAN EXCELLENCE (DYHE)



**For more info**

Call: +65 6297-8417 | WhatsApp: +65 9381 3608  
[www.eversafe.edu.sg](http://www.eversafe.edu.sg) | [training@eversafe.com.sg](mailto:training@eversafe.com.sg)



## OPEN POSITIONS

» SALES & MARKETING 01 nos

» CENTRE INCHARGE 03 nos

**APPLY**

**NOW**



Email us your resume at

**[hrl@eversafe.com.sg](mailto:hrl@eversafe.com.sg)**

Call: (+65) 9059 6339 | [www.eversafe.edu.sg](http://www.eversafe.edu.sg)



**2008**

Year Established



**150+**

Courses



**200+**

Dedicated Staffs



**1500+**

Corporate Clients

Eversafe Academy is a well-established training institute providing innovative training to meet the needs of the adult learners and PMETs of Singapore and regionally. We are one of the well-known Training Providers in the WSH sector, with a team of highly experienced and dedicated safety professionals who are trained and capable in the implementation of workplace safety, corporate loss control and regulatory compliance. We have a group of experienced engineers. We shape the safety skill sets of workers, Supervisors and Managers to ensure that they have adequate knowledge to carry out their works safely. We also organize training for corporate companies.

We are also accredited with a 4-year EduTrust Accreditation quality standard mark as part of the recognition of our excellence in quality teaching and student experiences as a registered Private Education Institute.



## Island wide 4 Locations

LITTLE INDIA



No. 2, Kampong Kapur Rd,  
Singapore 208674

JOO KOON



No. 2, Joo Koon Road,  
Singapore 628966

PIONEER JUNCTION



No.3, Soon Lee Street, #04-14,  
16,17, Pioneer Junction,  
Singapore 627606

WAN LEE



No. 2, Wan Lee Road,  
Singapore 627934

WE ARE  
**ALWAYS WITH YOU**  
FOR YOUR  
**TRAINING NEEDS**

+65 6297 8417    [www.eversafe.edu.sg](http://www.eversafe.edu.sg)  
+65 9381 3608    [training@eversafe.com.sg](mailto:training@eversafe.com.sg)



**TALK TO** \_\_\_\_\_  
**OUR EXPERT!**

Scan to Visit  
Our Website

