



EVERSAFE ACADEMY®
Steps To Success



ENGLISH

3 YEARS OF EA JOURNAL

SEPTEMBER 2025

36TH ISSUE

HOUSTIC EDUCATION



SCAN THE QR CODE
TO READ OUR
PREVIOUS JOURNALS

/EVERSAFE_ACADEMY



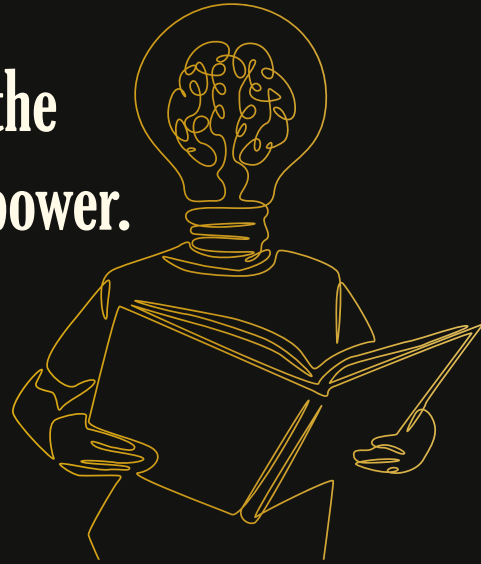
www.eversafe.edu.sg

Table of Contents

1. MD's Message
2. Our Achievements
3. Features & Highlights
4. Industry News & Trends
5. Tech Bites
6. Motivational Story
7. Our Trainers
8. Testimonials
9. Health & Fitness Programmes
10. Health Tips & Strategies
11. Fun with Puzzle & Games
12. Social Media Presence
13. Corporate Social Responsibility - CSR EVENTS
14. EA Green Plan
15. Latest EA Courses & Upcoming Events
16. About Eversafe Academy
17. EA Sky Yoga
18. Join Us



**Knowledge is power.
Sharing knowledge is the
key to unlocking that power.**
— Martin Uzochukwu Ugwu



1. MD's Message



Dear Esteemed Readers, Greetings from Eversafe Academy!



The 36th Edition of the Eversafe Academy Journal captures a month filled with heartfelt celebrations, meaningful learning, and steadfast commitment to quality and safety. From honouring love and family bonds on Wife Appreciation Day, to upholding excellence through the ISO 29993 audit, and strengthening institutional knowledge via PDPA awareness training, this edition reflects the Academy's holistic approach to education, nurturing both personal growth and professional integrity.

It also highlights moments of gratitude and unity, such as my birthday celebration, which brought together the Eversafe family in warmth and joy, and the fire drill at Kaki Bukit Home Stay Dormitory, which reaffirmed our proactive commitment to safety and preparedness. Each initiative this month reflects our core values of Quality, Innovation, and Research, guiding us toward continuous improvement and collective well-being.

1. Wife Appreciation Day

The 30th of August is observed as Wife Appreciation Day by Vethathiri Maharishi. To mark this occasion, Eversafe Academy organized a heartfelt celebration on 31st August 2025, bringing together 15 couples and more than 30 individuals (60 pax) in a beautiful gathering of love, gratitude, and mutual respect.

The event offered husbands a meaningful opportunity to express appreciation for their wives, acknowledging their invaluable support, sacrifices, and the strength they bring to family life. It was also a tribute to all married women who embody love, commitment, and selflessness in their roles as the foundation of every family.

More than just an event, Wife Appreciation Day reminded everyone of the importance of cherishing and honouring the irreplaceable contributions of wives in nurturing homes and strengthening relationships.

1. MD's Message

2. ISO 29993

The ISO 29993 audit commenced on 13th September and concluded on 12th October, covering a total of 13 courses over the span of one month. This comprehensive audit served as a valuable opportunity for reflection and enhancement across various aspects of our training operations.

Through the audit process, we identified our strengths and the areas that needs to be focused more. The valuable feedback and observations shared by the auditors have guided us to refine our internal processes, enhance learner support mechanisms, and ensure greater consistency in course delivery.

Overall, the ISO 29993 audit has been a meaningful exercise that reinforced Eversafe Academy's ongoing commitment to quality, transparency, and continuous improvement in providing effective and learner-centered training services.



3. My Birthday Celebration

My birthday on 16th September was a truly remarkable and memorable day. I felt incredibly blessed as our wonderful staff came together to make the day special. The celebrations began with a pooja early in the morning, followed by a cake-cutting ceremony and a series of engaging events throughout the day.

The day concluded with a joyful get-together and dinner, filled with laughter, camaraderie, and heartfelt wishes. I am sincerely grateful to each and every one for their love, thoughtfulness, and effort in making my birthday so meaningful and memorable. Their warmth and care made me feel truly appreciated and blessed.



1. MD's Message

4. Awareness Training on PDPA

An awareness training session on PDPA (Personal Data Protection Act) was conducted on 17th September for our full-time and associate teachers, with around 79 participants. The session aimed to enhance understanding of data protection regulations, promote responsible handling of personal information, and ensure compliance across all teaching and administrative activities. Key dos and don'ts were also highlighted during the session.

The training provided practical guidance on safeguarding data and reinforced the importance of privacy and confidentiality in day-to-day operations. It contributed to fostering a stronger culture of accountability and professionalism within the academy.



5. Fire Drill at Home Stay Dormitory, Kaki Bukit

Eversafe Academy conducted a fire drill at Kaki Bukit Home Stay Dormitory on 19th September 2025, led by Mr. Ramesh, our Senior Manager for Academic & Curriculum, Research and Development, along with Mr. Vincent, Marketing Manager, and supporting staff. Over 20 participants attended the session.

The drill provided practical experience in emergency procedures, helping participants understand safety protocols, evacuation routes, and appropriate responses during fire-related emergencies.

The exercise significantly enhanced awareness and preparedness, ensuring that all attendees are better equipped to respond effectively in case of a real fire, thereby contributing to the overall safety of the dormitory.



1. MD's Message



Looking Ahead:

The 30th of August is observed as Wife Appreciation Day by Vethathiri Maharishi. To mark this occasion, Eversafe Academy organized a heartfelt celebration on 31st August 2025, bringing together 15 couples and more than 30 individuals (60 pax) in a beautiful gathering of love, gratitude, and mutual respect.

The event offered husbands a meaningful opportunity to express appreciation for their wives, acknowledging their invaluable support, sacrifices, and the strength they bring to family life. It was also a tribute to all married women who embody love, commitment, and selflessness in their roles as the foundation of every family.

More than just an event, Wife Appreciation Day reminded everyone of the importance of cherishing and honouring the irreplaceable contributions of wives in nurturing homes and strengthening relationships.

WARM REGARDS,



R. MURUGESH
(MANAGING DIRECTOR)
EVERSAFE ACADEMY PTE LTD



2. Our Achievements



13

YEARS OF
EA JOURNAL
36TH ISSUE -
SEPTEMBER 2025



STEPS TO SUCCESS

SINCE 2008

WE HAVE SUCCESSFULLY
TRAINED AND GRADUATED

916,335+

STUDENTS AS OF AUGUST 2025

www.eversafe.edu.sg

3. Features & Highlights

I. EA Safety Committee Members Meeting

Our EA Safety Committee was created comprising of EA Management and selected highly experienced WSH Trainers with a focus on the daily safety surveillance and safety reviews of our 4 training branches. August month meeting was conducted on 25 August 2025 at our Wan Lee location.

The meeting was headed by our **Managing Director Mr. Murugesh** along with the other members.



3. Features & Highlights

2. Eversafe Academy conducted workshop on "Extracurricular Activities: **"Team work"** on 06th September 2025 with **49 members**.

02

3. Eversafe Academy had conducted **Free Computer Course** class on August month, **17 students** got benefited.

03

4. Eversafe Academy had conducted **Teachers Meet** on 17th September 2025 (Through zoom), around **79 Teachers** participated.

04

4. Industry News & Trends



Singapore's Workplace Safety and Health (WSH) Performance in 1H 2025

Continued Progress Towards Safer and Healthier Workplaces

Singapore continues to make encouraging progress in improving workplace safety and health standards. According to the latest Ministry of Manpower (MOM) report on Workplace Safety and Health (WSH) Performance for the first half of 2025, the nation has achieved significant reductions in both fatal and major injury rates, marking yet another step forward towards the goal of zero harm at work.

SINGAPORE'S WORKPLACE SAFETY AND HEALTH PERFORMANCE IN FIRST HALF OF 2025 SHOWED SUSTAINED PROGRESS FROM 2024

Sustained improvements reflect collective efforts of workers, employers and industry to prioritise safety and health to prevent injuries.



FATAL INJURY RATE

(per 100,000 workers)

1H 2025: 0.92 ▼

1H 2024: 1.0



MAJOR INJURY RATE

(per 100,000 workers)

1H 2025: 15.5 ▼

1H 2024: 16.6

Source:

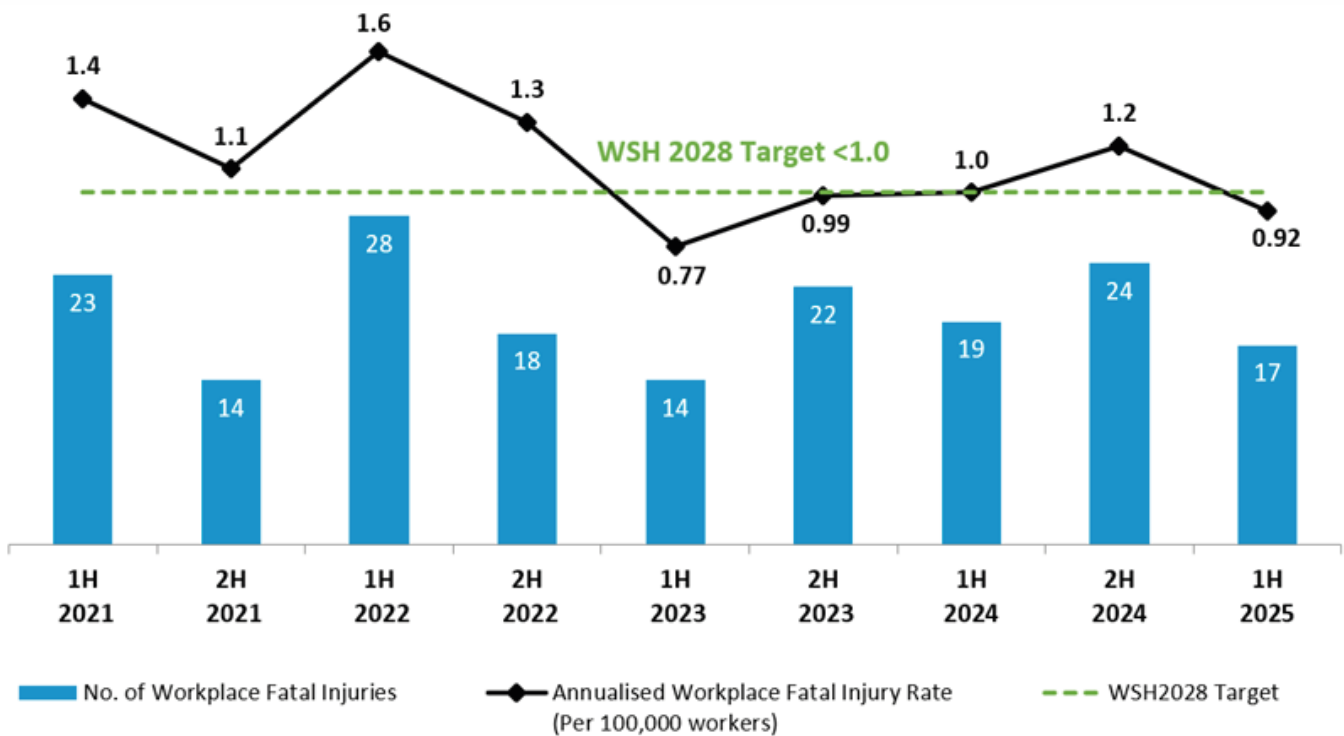
<https://www.mom.gov.sg/-/media/mom/documents/safety-health/reports-stats/wsh-national-statistics/wsh-report-2025.pdf>

The performance review highlights ongoing collaboration among government agencies, industry partners, and workers in strengthening the national WSH culture.

4. Industry News & Trends

Overall Performance: Sustained Downward Trend in Fatal and Major Injuries

In the first half of 2025, Singapore's annualised fatal injury rate declined to 0.92 per 100,000 workers, compared to 1.0 in 1H 2024. This represents one of the lowest levels ever recorded. The major injury rate also fell to an all-time low of 15.5 per 100,000 workers, down from 16.6 in the same period last year (excluding the 2020 anomaly during the COVID-19 pandemic).



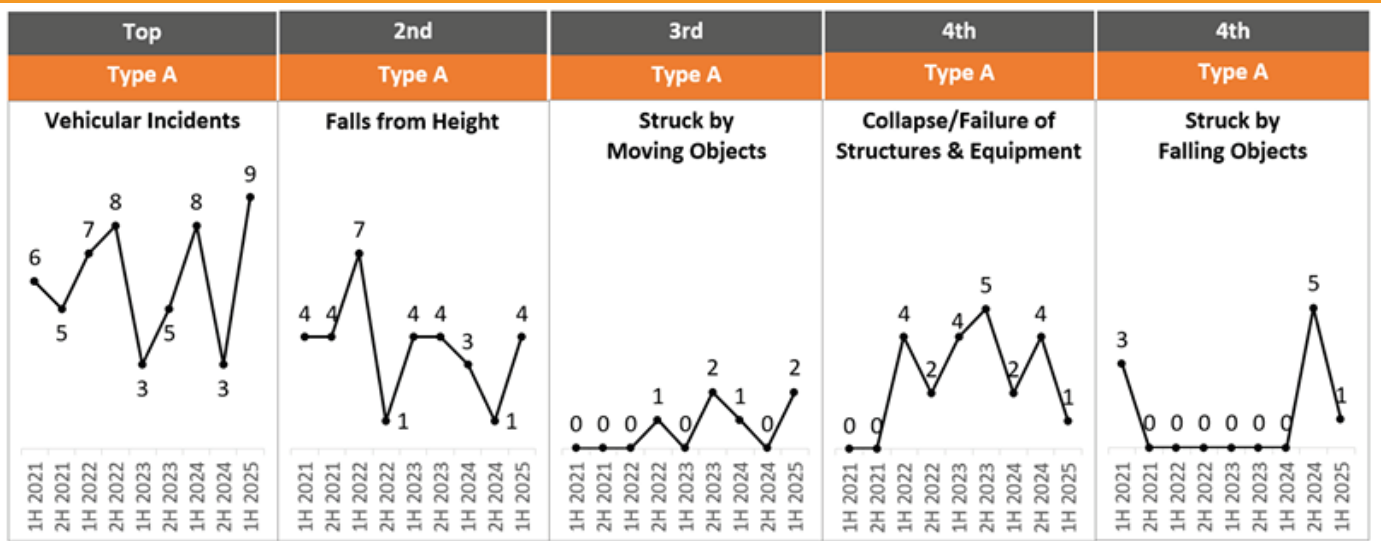
Number and rate of workplace fatal injuries, 1H2021-1H2025

Source: <https://www.mom.gov.sg/-/media/mom/documents/safety-health/reports-stats/wsh-national-statistics/wsh-national-stats-2025.pdf>

These figures demonstrate a consistent downward trend over the past few years and reflect the strong commitment of both employers and employees in maintaining a safe and healthy work environment.



4. Industry News & Trends

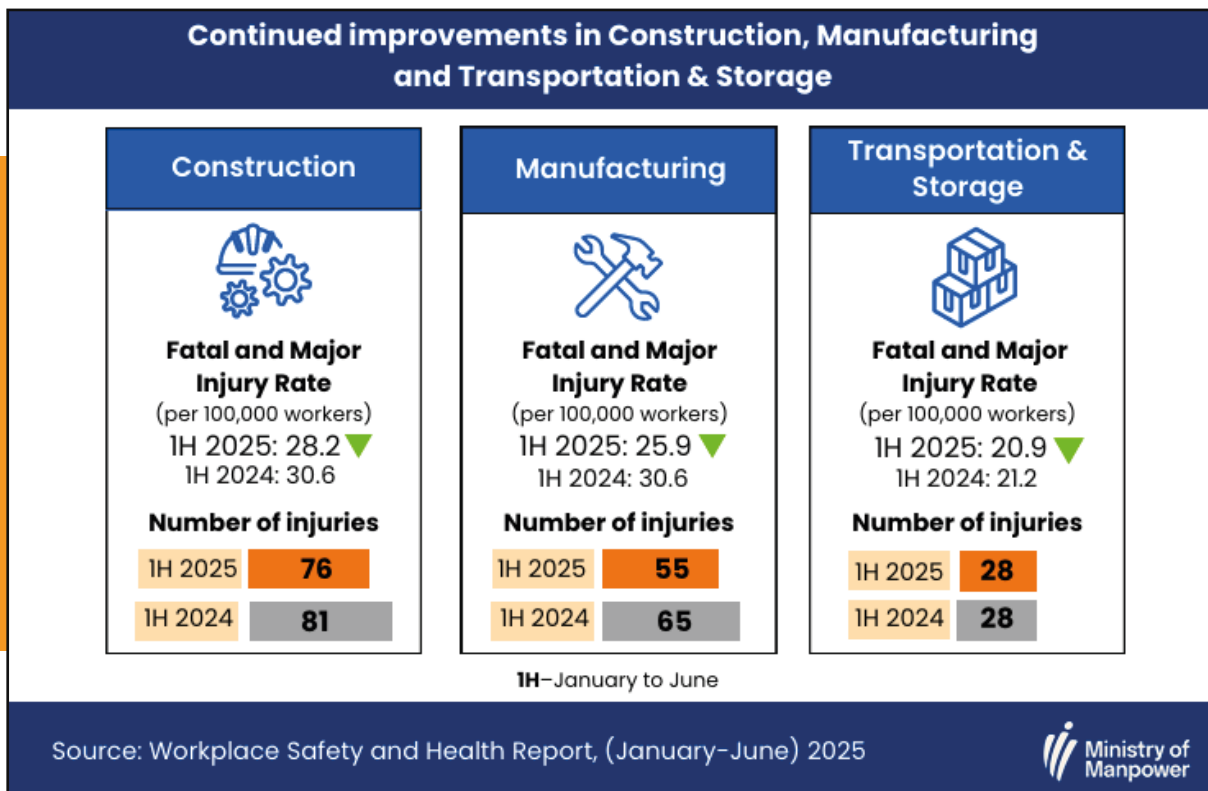


Number and rate of workplace fatal injuries, 1H2021-1H2025

Source: <https://www.mom.gov.sg/-/media/mom/documents/safety-health/reports-stats/wsh-national-statistics/wsh-national-stats-2025.pdf>

Across all sectors, vehicular incidents and falls from height remained the leading causes of fatalities, while slips, trips, and falls continued to be the most common cause of major injuries. These recurring risks highlight the importance of sustained focus on fundamental safety controls such as proper supervision, safe access, housekeeping, and worker training.

Sectoral Performance: Encouraging Results in High-Risk Industries



Source: <https://www.mom.gov.sg/-/media/mom/documents/safety-health/reports-stats/wsh-national-statistics/wsh-report-2025.pdf>

4. Industry News & Trends

Construction Sector

The construction industry, traditionally one of the higher-risk sectors, recorded encouraging progress. The annualised fatal and major injury rate per 100,000 workers fell from 30.6 (81 injuries) in 1H 2024 to 28.2 (76 injuries) in 1H 2025.

Regular and large-scale worksites reported fewer injuries (27 in 2025 compared to 31 in 2024), while smaller-scale projects recorded 46 injuries, remaining largely stable from 47 in the previous year.

These improvements are attributed to stronger enforcement measures, including a sector-wide safety time-out in November 2024 and the introduction of stricter safety requirements for public-sector projects from April 2024. Enhanced supervision, mandatory risk assessments, and increased safety audits at project sites have also contributed to reducing incidents.



Manufacturing Sector

Similarly, the Manufacturing sector showed a notable decline in the number of fatal and major injuries, falling from 65 in 1H 2024 to 55 in 1H 2025. The metalworking industry, in particular, achieved a significant 29% reduction in serious incidents.

This improvement is linked to tighter machinery safety regulations, regular equipment inspections, and greater adherence to lock-out/tag-out (LOTO) procedures. The emphasis on safe machine operation and worker competency has proven effective in curbing mechanical-related accidents.

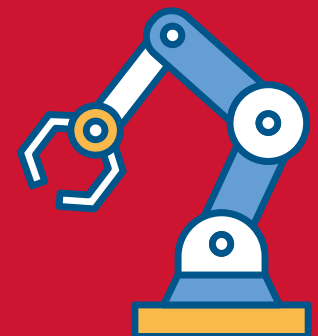


Enforcement & Compliance Efforts

To sustain the momentum in safety improvements, MOM intensified its enforcement activities in 2025. More than 3,000 workplace inspections were conducted in the first half of the year, targeting high-risk sectors such as construction, manufacturing, marine, and logistics. The inspections focused on critical areas, including vehicular safety, working at height, machinery safety, and slip, trip, and fall prevention.

These efforts uncovered nearly 7,000 safety breaches, resulting in over S\$1.5 million in composition fines issued to errant companies. Additionally, 28 stop-work orders were served to workplaces where serious lapses were found. Such enforcement actions serve as a reminder to all employers that compliance with safety regulations is not optional but a fundamental duty to protect workers.

Beyond enforcement, MOM and its WSH partners continue to emphasize education and engagement. Initiatives such as the "Safety Starts with Me" campaign, WSH symposiums, and industry dialogues help raise awareness and promote best practices among employers and employees alike.



4. Industry News & Trends



Occupational Diseases: Stable Trends with Expanded Coverage

While accident-related injuries often draw more attention, occupational diseases (ODs) can have equally serious and long-term consequences. The 1H 2025 data showed that the annualised OD rate remained stable at 25.2 cases per 100,000 workers (465 cases), comparable to 25.6 (468 cases) in 1H 2024.

- **Noise-induced deafness / hearing loss (60%)**
- **Work-related musculoskeletal disorders (26%)**
- **Occupational skin diseases (10%)**



MOM's efforts in promoting early detection and management of ODs, together with stronger workplace health surveillance, have helped in maintaining stable disease rates despite an expanding workforce.

To further enhance protection, MOM will update the Occupational Disease list effective 1 December 2025, aligning the lists under both the Workplace Safety and Health Act (WSHA) and the Work Injury Compensation Act (WICA).

The revised list includes 38 occupational diseases that will be both reportable under WSHA and compensable under WICA. Key enhancements include:

- Expanded coverage of work-related musculoskeletal disorders, now encompassing lower limbs and spine conditions, not just upper limbs.
- Broader recognition of occupational infectious diseases, extending beyond tuberculosis to other work-related infections in high-risk settings.
- Inclusion of previously omitted toxic conditions such as toxic anaemia and poisoning by beryllium or aniline.
- Removal of outdated conditions (e.g., carbon dioxide poisoning, corneal ulceration) to ensure relevance to current occupational health risks.

This alignment ensures that both workers and employers have clearer guidance on disease reporting and compensation, reflecting the latest medical evidence and international standards.



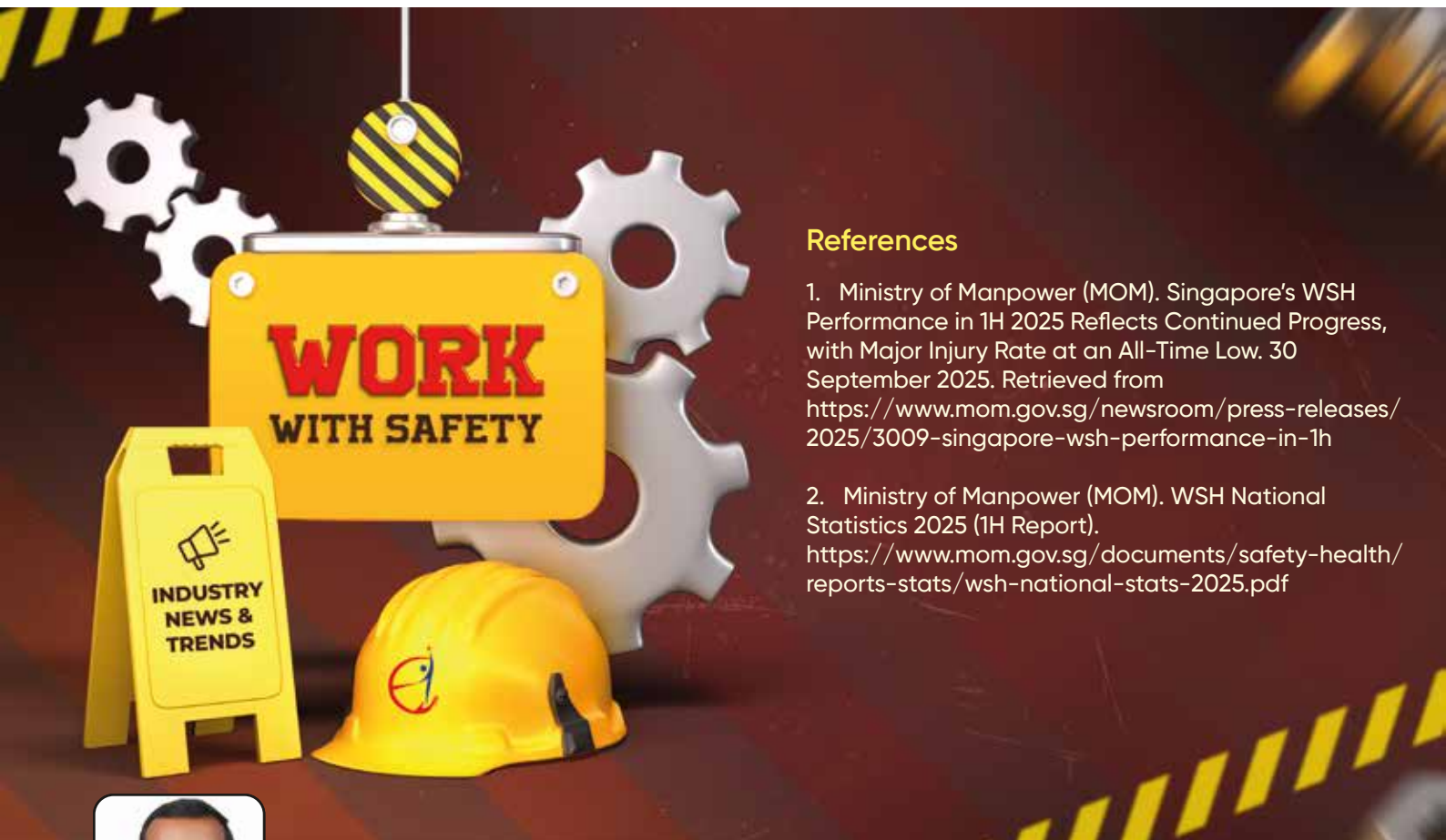
4. Industry News & Trends



Singapore's progress in WSH performance did not happen by chance – it is the product of collective responsibility. Employers, unions, workers, and industry associations each play a crucial role in shaping a sustainable safety culture.

With the updated OD list and enhanced enforcement strategies, MOM's approach continues to balance education, engagement, and enforcement, ensuring that improvements are not only achieved but also sustained.

The nation's ongoing commitment to "Vision Zero" – the belief that all injuries and ill-health at work are preventable – remains the guiding principle. The first half of 2025 demonstrates that steady progress is possible when all stakeholders work together, prioritising safety and health above all else.



References

1. Ministry of Manpower (MOM). Singapore's WSH Performance in 1H 2025 Reflects Continued Progress, with Major Injury Rate at an All-Time Low. 30 September 2025. Retrieved from <https://www.mom.gov.sg/newsroom/press-releases/2025/3009-singapore-wsh-performance-in-1h>
2. Ministry of Manpower (MOM). WSH National Statistics 2025 (1H Report). <https://www.mom.gov.sg/documents/safety-health/reports-stats/wsh-national-stats-2025.pdf>



**Mr. Thanikachalam
Rameshkumar**



Head – Academic Department
Eversafe Academy Pte Ltd

5. Tech Bites

Artificial Intelligence and Emotional Intelligence: A New Era of Workplace Safety

How emotion-aware AI is reshaping the way organizations protect their people.



A New Kind of Safety Revolution

For decades, workplace safety meant hard hats, warning signs, strict protocols, and compliance checklists. But in 2025, a quiet revolution is taking place – one that focuses not only on the physical environment but also on the emotional state of the people working in it.

Welcome to the era where Artificial Intelligence (AI) meets Emotional Intelligence (EI). From smart wearables that sense stress levels to AI systems that adapt training based on a worker's emotional responses, companies are beginning to treat emotional well-being as a core part of safety strategy.

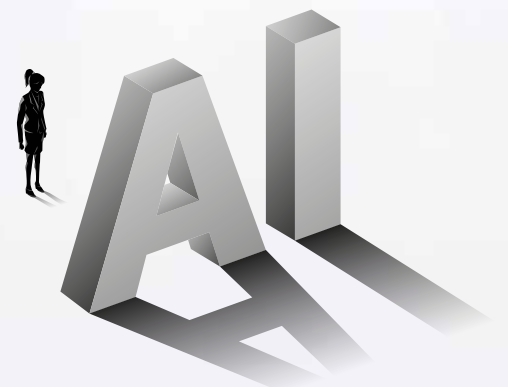
**"AI that understands emotion is not just a tool
it's a partner in creating safer, more human workplaces."**

1. When Technology Feels: Emotion-Aware Wearables

Imagine a construction worker wearing a helmet that not only protects the head but also monitors the heart rate, micro facial expressions, and voice tone. The device can detect signs of stress, fatigue, or frustration long before the worker consciously realizes them.

This is no longer futuristic fiction – emotion-aware wearables are becoming a reality. Using advanced sensors and AI, these devices provide real-time alerts to supervisors when emotional or cognitive strain could lead to accidents.

By catching emotional fatigue early, organizations can schedule timely breaks, reassign tasks, or provide support before small risks turn into serious incidents.



5. Tech Bites



2. Predicting Accidents Before They Happen

Traditional safety analytics focus on historical data: where slips occurred, what equipment failed, or who skipped PPE. But emotionally intelligent AI goes further – it combines behavioural and emotional patterns with operational data to predict potential safety incidents.

For example, AI can analyze voice tone during team communications to detect stress buildup in high-pressure environments. It can examine patterns in shift work, workload spikes, or emotional fatigue indicators to forecast when accidents are more likely.

This enables companies to move from reactive response to preventive action, reducing both injuries and downtime.

3. Smarter, Kinder Training

Training is at the heart of workplace safety – and AI is giving it a human touch. Emotionally adaptive training platforms use VR or AR to simulate real-life safety scenarios while reading the learner's emotional cues in real time.

If the trainee seems anxious or confused, the AI can slow down, provide clearer instructions, or offer encouragement. If the trainee is confident, the system ramps up the complexity to build resilience.

The result is deep learning that sticks, because the training responds to the learner's emotional state – not just their answers on a quiz.

**"When training listens to emotions,
it turns compliance into confidence."**

5. Tech Bites

4. Leadership with Emotional Insight

Great safety cultures start with great leadership. AI tools are now helping supervisors and managers understand team morale and emotional well-being at scale.

By analyzing feedback forms, emails, and communication patterns (while preserving privacy), these systems can detect dips in morale, rising stress levels, or disengagement. They can nudge leaders to check in with teams empathetically, address emotional pressure points, and prevent unsafe behaviour that often stems from burnout or frustration.

This is safety leadership powered by data and empathy – a powerful combination.

5. Two-Way Emotional Communication

Perhaps the most groundbreaking trend is the creation of real-time emotional feedback loops. Instead of being passive subjects of monitoring, workers can now actively signal how they feel to the system.

Whether through a wearable tap, a voice command, or a dashboard interface, employees can communicate if they feel unsafe, overwhelmed, or emotionally strained. The AI interprets these signals and responds – alerting supervisors, adjusting workflows, or recommending rest periods.

For the first time, safety systems are beginning to listen as much as they watch.

Balancing Promise and Responsibility

The union of AI and Emotional Intelligence brings remarkable benefits:

- ◆ Earlier detection of emotional risk factors
- ◆ Better engagement and morale
- ◆ Fewer accidents and higher productivity
- ◆ Personalized safety interventions



5. Tech Bites

However, it also raises important questions. Privacy, cultural sensitivity in emotional interpretation, and the need for human oversight remain essential considerations. Emotion-aware systems should support, not replace, human empathy and judgment.

The Road Ahead

Workplace safety is no longer just about hard hats and hazard signs. It's about understanding the hearts and minds of the people who make organizations run. Emotionally intelligent AI is helping companies build safer, healthier, and more compassionate workplaces – where technology amplifies human care rather than replacing it.



“The safest workplaces of the future will be those that care not only for the body – but also for the soul.”

Sidebar: Benefits vs. Challenges

• Benefits

Early emotional risk detection

Improved well-being and engagement

Predictive accident prevention

Emotionally adaptive training

• Challenges

Privacy and data sensitivity issues

Cultural bias in emotional interpretation

Need for strong human oversight

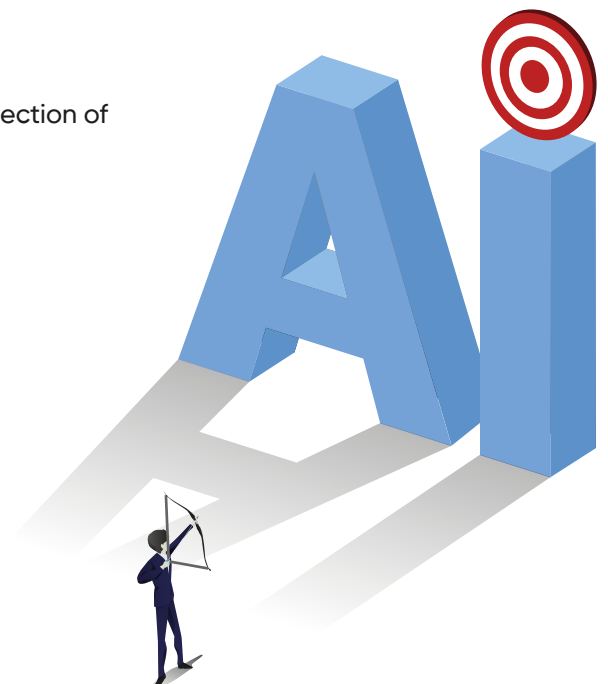
Integration with legacy systems

Conclusion

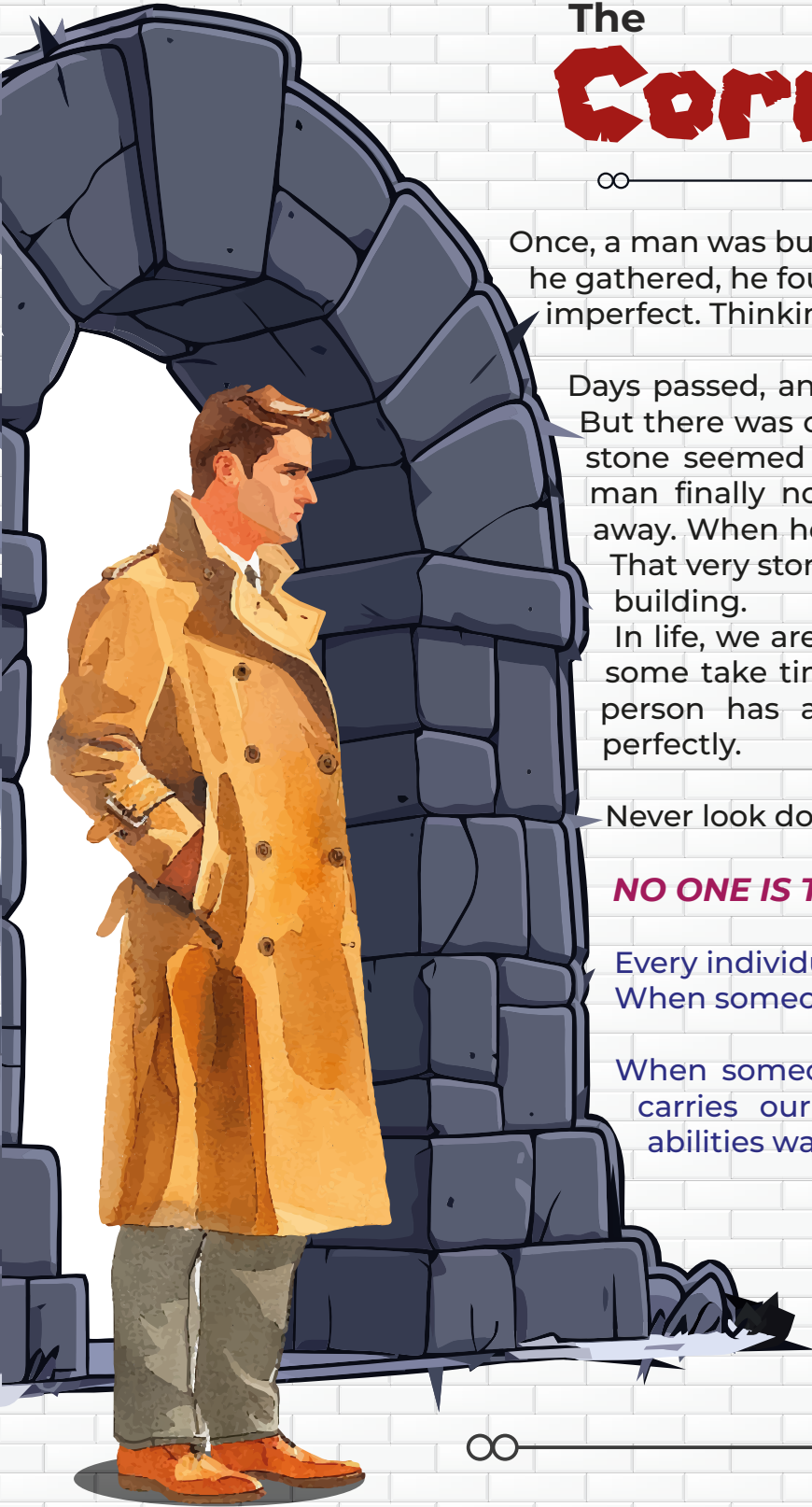
As technology evolves, so must our definition of safety. AI with Emotional Intelligence isn't just a trend – it's a mindset shift. It's about recognizing that emotions shape actions, and actions shape outcomes. By embracing this, workplaces can become not only safer, but smarter and more humane.

Sources:

1. **MIT Media Lab – Affective Computing Research Group.**
"Emotion Recognition Technologies and Their Workplace Applications."
<https://www.media.mit.edu>
2. **arXiv Preprints (2024–2025).**
 - a. Vision Language Model for Interpretable and Fine-grained Detection of Safety Compliance (Clip2Safety)
<https://arxiv.org/abs/2408.07146>
 - b. Privacy-Aware AI-Based Ergonomic Analysis
<https://arxiv.org/abs/2505.07306>
3. **World Health Organization (WHO).**
"Mental Health in the Workplace: Global Policy Framework."
<https://www.who.int>
4. **Protex AI (2025).**
Workplace Safety Trends: Leveraging AI for Safer Workplaces.
<https://www.protex.ai/post/workplace-safety-trends-ai>
5. **Visionify.ai (2025).**
"Top Workplace Safety Trends to Watch in 2025."
<https://visionify.ai>



6. Motivational Story



The **Cornerstone** Story

Once, a man was building a house. Among the many stones he gathered, he found one that looked rough, uneven, and imperfect. Thinking it had no use, he tossed it aside.

Days passed, and the construction neared completion. But there was one spot — a crucial corner — where no stone seemed to fit. After searching everywhere, the man finally noticed the same stone he had thrown away. When he placed it in that corner, it fit perfectly. That very stone became the cornerstone of the entire building.

In life, we are all like those stones. Some shine early, some take time to show their true worth. But every person has a purpose — a place where they fit perfectly.

Never look down on yourself or others.

NO ONE IS TOO SMALL, NO ONE IS TOO BIG.

Every individual deserves respect
When someone succeeds, celebrate them.

When someone struggles, guide them. Each of us carries our own talents, strengths, and hidden abilities waiting for the right moment to shine.

So, even if you feel overlooked or underestimated, remember this —

***You are not useless.
You are priceless.***

**Your time will come, and when it does,
the world will see the value that only you can bring.**

**Mr. Rambu Paul
Dhinakaran G
Senior Manager**

— Human Resources

7. Our Trainers

OUR MD MR MURUGESH PRESENTED
THE MONTHLY TRAINER EXCELLENCY PATHWAY (TEP)

CERTIFICATE OF APPRECIATION FOR AUGUST 2025 EXEMPLAR TRAINER'S



FULL TIME
TRAINERS

FULL TIME TRAINERS



MR. ANWAR NIAZI
BIN MOHAMED



MR. MOHAMED ALI
BIN TAIB



MR. PRINCETON SINCLAIR
PETER



ASSOCIATE
TRAINERS

ASSOCIATE TRAINERS



MR. JOHN MOHAN
DURAISANGAM



MR. THEVANTHIRAN
SINNATHAMBI



MR. MOHAMMAD IMTIAZ
HOSSAIN BHUIYAN



8. Testimonials (Clients)

✦ Endorsement of our Commitment to our **Student and Customers**,
✦ Some of the endorsements and feedback from our **Valued Clients**.



I want to thank you so much for your outstanding service in helping with the application for the WSH Coordinator Refresher Training Course. Your quick responses to my questions and professionalism throughout the process have been commendable.

Company Name : Raymond De Engineering Pte. Ltd
Company Incharge : Yeat Nai Jiun (MS)
Course Incharge : Ms. Kaushalya

Company Name : Jade Clover (SEA) Pte Ltd
Company Incharge : Ms. Aisha Syed Shaikh
Course Incharge : Ms. Shenbagam



"Hi Eversafe Team, Shenba has always been a great support in meeting all our requirements and is always happy to help with any of our requests."



Thank you for your email. I appreciate your assistance. I am very satisfied with the service you have provided.

Company Name : Asiatec Engineering Pte Ltd
Company Incharge : RONE
Course Incharge : Ms. Shenbgam

Company Name : Siemens Energy Pte Ltd
Company Incharge : Mr. Praveen Narayanasamy
Course Incharge : Ms. Pavitra



I am extremely pleased with the service provided. The team is always quick to respond to emails and incredibly flexible with rescheduling, even at the last minute. Highly recommended.

8. Testimonials (Students)



YEARS OF
EA JOURNAL
36TH ISSUE -
SEPTEMBER 2025



✦ Endorsement of our Commitment to our **Student and Customers**,
✦ Some of the endorsements and feedback from our **Valued Students**.



I was impressed with the prompt and helpful response I received from your customer service team. They resolved my issue quickly and efficiently.

Student Name : Mr. PR.Mariappan
Course Name : LEVEL B
Course Incharge : Ms. Kaushalya

Student Name : Mr. Rakib Hasan
Course Name : LEVEL B
Course Incharge : Ms. Kaushalya



"I am extremely satisfied with the service I received from your company. The customer service representative was professional, friendly, and very helpful." Thank you once again for your assistance. Greatly Appreciated! Keep going! All the best for your future!"



Very happy with excellent service by Ms Mary Delfin to accomodate my busy schedule and frequent requests to change my course enrolment.

Really appreciate the good service. Thank you Eversafe!"

Student Name : Mr. Christopher Tan
Course Name : ECSRTSP
Course Incharge : Ms. Delfin

Student Name : Mr. Sevugaperumal Udaya Kumar
Course Name : LEVEL B
Course Incharge : Ms. kaushalya



I am extremely pleased with the service provided. The team is always quick to respond to emails and incredibly flexible with rescheduling, even at the last minute. Highly recommended.

9. Health & Fitness Programmes



YEARS OF
EA JOURNAL
36TH ISSUE -
SEPTEMBER 2025

Hey, Eversafe Academy Family!

August was all about momentum—and our team didn't miss a beat! Our steppers brought their A-game, proving that consistency and energy make every step count.



Ms. Shenbagam

576,788 Steps

(Still unstoppable and setting the pace for all of us!)



Ms. Ezhil

530,164 Steps

(Showing that dedication and determination always pay off.)



Ms. Aparna

492,204 Steps

(Keeping strong and steady, proving persistence wins!)



A huge shoutout to everyone who kept moving this August—you're inspiring a healthier, more active community!

Let's carry this momentum into September. Every step counts, and together, we're making wellness a lifestyle.

10. Health Tips & Strategies

HEALTH-TIPS TO NATURALLY PURIFY YOUR BLOOD

and promote better overall health

Stay Hydrated

Drink 8-10 glasses of water daily

Water helps flush out toxins from your body through urine and sweat, supporting kidney and liver function.

Exercise Regularly

Quality sleep helps the body repair and detoxify itself naturally. Try to get 7-8 hours of sleep every night.

Eat Detoxifying Foods

Include foods rich in antioxidants & chlorophyll

Green leafy vegetables (spinach, kale, moringa, coriander)

Beetroot supports liver detoxification.

Lemon and citrus fruits high in vitamin C, which cleanses the liver.

Garlic and turmeric help eliminate toxins and support immunity.

Avoid Toxins

Reduce junk food, alcohol, smoking, and excess sugar. These can overload your liver and increase toxin buildup.

Support Liver Kidney Health

Your liver and kidneys are the main detox organs. Eat foods like carrots, apples, cucumber and cranberries to support them.

Drink Herbal Detox Drinks

Neem juice purifies blood and improves skin health.

Turmeric milk drink before bedtime for anti-inflammatory and cleansing benefits.

Green tea rich in antioxidants.

Aloe vera juice aids digestion and detox.

• **Eat real food**
move daily sleep well
and manage stress •

Demolition Safety Quiz

1. All workers must wear _____ when performing demolition work to protect against falling debris.
2. _____ should be conducted to identify potential hazards before starting any demolition project.
3. Demolition sites must have _____ to prevent unauthorized access and protect the public.
4. When removing structural components, workers must ensure that the structure is _____ before proceeding.
5. _____ must be worn by workers to protect their eyes from flying particles during demolition.
6. Hazardous materials, such as _____, must be safely removed before demolition begins.
7. The use of _____ is required to protect workers from falling when working at heights during demolition.
8. _____ is the process of ensuring that all utility services are disconnected before demolition.
9. Heavy machinery used in demolition must be operated by _____ personnel only.
10. Workers should be trained in _____ procedures to respond effectively in case of an emergency.

11. Fun with Puzzle & Games

Please pick from the list of suggested answer for each question:

Question No	Answers
A	Safety goggles or face shields
B	Stabilized or supported
C	Barriers or fencing
D	Asbestos
E	Fall protection equipment (e.g., harnesses, guardrails)
F	Emergency response
G	Personal protective equipment (PPE)
H	A risk assessment
I	Isolation or decommissioning
J	Certified or trained



SCAN QR CODE TO SUBMIT YOUR COMPLETED MATCHING SAFETY PUZZLE



Please complete the matching quiz questions and **Snap a Picture** to upload via our **QR Code** with your details for a chance to win prizes.

Prizes



LAST MONTH WINNERS (AUGUST)



1st S\$50

MOHAMAD
ABUBAKKAR
ABDUL NAZIR



2nd S\$40

GOVINDARAJ
SOWNDHARRAJAN



3rd S\$30

ROSAL MA
WIRLYN
DIASNES



QUIZ DEVELOPED BY

Mr. Richard Sim
Academic Manager
Eversafe Academy Pte Ltd

12. Social Media Presence



Eversafe Academy reach and Impressions for **August 2025**



SOCIAL MEDIA VIEWS **#1,125**

MOBILE APP VIEWS **#30,146**

YOUTUBE IMPRESSION - 890



Eversafe Academy believes that creating awareness through Social Media can make a positive impact on the public and learning communities. Eversafe Academy has been producing helpful and informational videos on our YouTube Channel "Eversafe Academy".

Some of the recent videos posted on our channel are



01. Student Testimonial Videos

Posting testimonial videos can be a great way to showcase positive experiences and feedback from the students by obtaining proper consent from them.



2. Course Informational Videos

Engaging videos with course information such as contents, duration of the course, fee, and other details, to encourage and promote learning in-demand skills and courses to improve career advancement chances for various industries.



3. General & Safety Videos:

In July 2025, we launched the EA Podcast, featuring our teachers explaining various courses. We also posted the Graduation Ceremony Highlights, where Mr. Chandran Santhosh, a Project Manager, shared a testimonial about the WCRT Course and released a safety awareness video on workplace safety.



13. Corporate Social Responsibility



1. We have planned to start the next batch for **FREE YOGA CLASSES** for migrant workers, and we are most pleased to share that there was a high demand for this type of FREE classes, which forms part of our Corporate Social Responsibility (CSR) service by Eversafe Academy for the migrant worker community.

- October 2025
Date: 02 - 09 - 16 - 23 - 30
- November 2025
Date: 06 - 13

Timing:
06.30 PM to 09.30 PM

Location: #3, Soon Lee Street, #04-14,16,17, Pioneer Junction, Singapore 627606



2. EA will be conducting **Free Computer Course** on the below scheduled dates.

- 12th October 2025
- 19th October 2025
- 26th October 2025
- 02nd November 2025
- 09th November 2025
- 16th November 2025

Timing:
06.00 pm to 09.45 pm
(All Sundays)

Location: Little India branch, #2, Kampong Kapur Rd, Singapore 208674








FOR **BOOKING** Call: +65 6297 8417
Mail: training@eversafe.com.sg



3. Eversafe Academy conducted the **FIRE DRILL** at Kaki Bukit Homestay Dormitory on 19th September 2025.



**Eversafe Academy's
Digital Assessment
Initiative:
A Step towards
Sustainability under
the Singapore
Green Plan**

-  As part of its ongoing commitment to sustainability and innovation in training, Eversafe Academy has transitioned the assessment process for its Workplace Safety and Health Management in Construction Industry (WSHMCI) course to an online format allowing learners to complete assessments online rather than through traditional paper-based methods.
-  This initiative significantly reduces paper consumption, contributing directly to the environmental goals outlined in the Singapore Green Plan 2030.
-  By reducing reliance on paper, Eversafe Academy not only cuts down on operational waste but also models environmentally responsible practices for learners and industry stakeholders
-  The academy's digital assessment platform ensures secure, accessible, and efficient evaluation for students, while maintaining high standards of quality and compliance in safety training.
-  Furthermore, it enhances administrative efficiency and reduces the environmental footprint associated with printing, storage, and disposal of paper materials.

15. Latest EA Course & Upcoming Events

LATEST COURSES

01
Managing
Combustible
Dust Risks
(MCDR)

03
Eversafe
Academy
will be soon
launching the
new courses

02
Practical Lifting
Gear Inspection
Workshop
(PLGIW)

5S
Implementation
for Excellence
(5SIWEX)



EVENTS IN OCTOBER



1. Eversafe Academy has planned to conduct Diwali Special Classes on October 19th, 20th & 21st 2025.



2. Eversafe Academy has scheduled to conduct the AMS Audit – Stage 1 on October 8th , and Stage 2 on October 13th , 14th , and 15th , 2025.



3. Eversafe Academy has scheduled to conduct the IMS Audit on October 1st, 2nd, 3rd, and 28th, 2025.

16. About Eversafe Academy




Eversafe Academy is a well-established training institute providing innovative training to meet the needs of the adult learners and PMETs of Singapore and regionally. We are one of the well-known Training Providers in the WSH sector, with a team of highly experienced and dedicated safety professionals who are trained and capable in the implementation of workplace safety, corporate loss control and regulatory compliance. We have a group of experienced engineers.

We shape the safety skill sets of workers, Supervisors and Managers to ensure that they have adequate knowledge to carry out their works safely. We also organize training for corporate companies.


We are also accredited with a 4-year EduTrust Accreditation quality standard mark as part of the recognition of our excellence in quality teaching and student experiences as registered Private Education Institute.




2008
Year Established


4
Locations


150+
Courses


200+
Dedicated Staffs


916,335
Trainees Trained


26,259+
Corporate Clients



17. EA Sky Yoga

EVERSAFE ACADEMY SKY MEDITATION CENTRE

WCSC APPROVAL NO: WCSC/APP/SGP/054

SCIENCE OF UNIFIED LIVING

A revolutionary insight blending Ancient Indian Wisdom
and Contemporary Science

Join Now



Scan QR to
View Our
Courses
in detail.

Visit our website for more details:

www.eversafe.edu.sg/yoga-home

Our Featured Courses:

1. *YOGA FOR HUMAN EXCELLENCE – FOUNDATION COURSE*
2. *KAYAKALPA YOGA*
3. *INTROSPECTION COURSE (I, II & III)*
4. *CHILDREN YOGA*
5. *CERTIFICATE IN YOGA FOR HUMAN EXCELLENCE (CYHE)*
6. *DIPLOMA IN YOGA FOR HUMAN EXCELLENCE (DYHE)*



For more info



Tamil & English
Language
Classes
Available!

Call: +65 6297-8417 | WhatsApp: +65 9381 3608
www.eversafe.edu.sg | training@eversafe.com.sg

18. Join Us

**WE ARE
HIRING**

Join our team



APPLY NOW



Email us your resume at
hr1@eversafe.com.sg

SALES & MARKETING

**STUDENT SUPPORT
SERVICE OFFICER (CI)**

VIGILANCE OFFICER

WSH TRAINERS

DIPLOMA TRAINERS

For more info contact:

Call: (+65) 9059 6339 | www.eversafe.edu.sg





Island wide 4 Locations

LITTLE INDIA



No. 2, Kampong Kapur Rd,
Singapore 208674

JOO KOON



No. 2, Joo Koon Road,
Singapore 628966

PIONEER JUNCTION



No.3, Soon Lee Street, #04-14,
16,17, Pioneer Junction,
Singapore 627606

WAN LEE



No. 2, Wan Lee Road,
Singapore 627934

WE ARE
ALWAYS WITH YOU
FOR YOUR
TRAINING NEEDS

+65 6297 8417 www.eversafe.edu.sg
+65 9381 3608 training@eversafe.com.sg



TALK TO _____
OUR EXPERT!

Scan to Visit
Our Website

