

FOLLOW US



EVERSAFE ACADEMY®
Steps To Success

ENGLISH

EA JOURNAL

JANUARY 2026 | 40TH ISSUE



 www.eversafe.edu.sg



SCAN THE QR CODE
TO READ OUR ALL
PREVIOUS JOURNALS

Table of Content

	pg#
01 MD's Message	04
02 Our Achievements	08
03 Features & Highlights	09
04 Industry News & Trends	11
05 Tech Bites	16
06 Motivational Story	20
07 Our Trainers	21
08 Testimonials	22
09 Health & Fitness Programmes	24



VISION

Educate, Empower and Transform

MISSION

Quality, Innovation and Research

VALUES

Excellence, Life-Long Learning and Technological Advancement

	pg#
10 Health Tips & Strategies	25
11 Fun with Puzzle & Games	26
12 Social Media Presence	28
13 Corporate Social Responsibility - CSR Events	29
14 EA Green Plan	30
15 Latest EA Courses & Upcoming Events	31
16 About Eversafe Academy	32
17 EA Sky Yoga	33
18 Join Us	34



WE'LL KEEP YOU INFORMED WITH THE
NEWEST FACTS AND KNOWLEDGE.
PLEASE CONTINUE TO SUPPORT US.

SCAN THE QR
TO READ OUR ALL
JOURNAL ISSUES



MD's Message

Dear Esteemed Readers,

Greetings from Eversafe Academy!

I am pleased to welcome you to the 40th edition of the Eversafe Academy Journal. As we step into 2026, this milestone edition captures the spirit of growth, achievement, and community that defines Eversafe.

From a vibrant start to the Year of the Horse, through meaningful community outreach, to securing our operational stability and preparing for future excellence, this edition reflects our ongoing commitment to empowering individuals, supporting our stakeholders, and giving back to society.

In this edition, you will read about the productive celebrations of Chinese New Year, our successful lease renewal at 2 Kampong Kapur, the heartwarming visit to Man Fut Tong Nursing Home, and our diligent preparations for the upcoming EduTrust recertification audit. Each story exemplifies the dedication, resilience, and values that continue to drive Eversafe forward.

MD's Message

1. CNY 2026: A Joyful and Productive Beginning at Eversafe

On the occasion of Chinese New Year 2026, we at Eversafe extend our warmest wishes to everyone for a prosperous and successful Year of the Horse.

The new year began on a wonderful and energetic note for us. To make the most of the festive season, we conducted special classes on the 15th, 16th, 17th, and 18th of February. These sessions were thoughtfully organized to support skill enhancement and professional development.

We are proud to share that many earnest workers utilized their holidays fruitfully by participating in these classes for their career upgradation. Their dedication and commitment to continuous learning truly reflect the spirit of growth and progress that the New Year symbolizes.

As we step into 2026, Eversafe remains committed to empowering individuals through knowledge, training, and development. May this Year of the Horse bring energy, determination, and success to all.

2. SLA Awards 6-Year (3+3) Tenure for Our Head Office

We are proud to announce that our current head office at 2 Kampong Kapor, Singapore 208674 will continue operating at the same location for another six years (3 + 3 years). Following a recent tender exercise conducted by the Singapore Land Authority (SLA), Eversafe Academy successfully secured the bid. SLA has awarded us a six-year tenure (3 + 3 years), commencing from 01 April 2026.

This award reflects stability, continuity, and confidence in our operations at this location. It reaffirms our strong presence and commitment to delivering quality services to our clients and partners.

Remaining at the same premises enables us to continue serving our stakeholders efficiently while maintaining the familiarity and accessibility that our team values. The renewed tenure also strengthens our long-term planning and operational growth strategy.

We are deeply grateful for this opportunity and look forward to many more productive and successful years ahead at our head office.

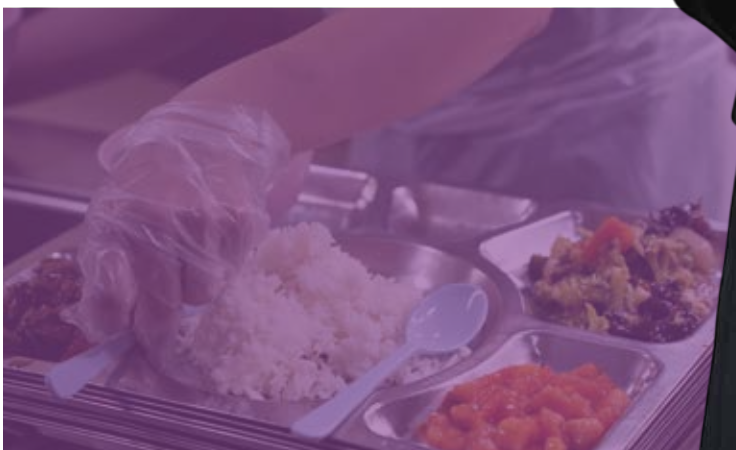
MD's Message

3. Giving Back: Visit to Man Fut Tong Nursing Home

On 20 February 2026, our team visited **Man Fut Tong Nursing Home** as part of our monthly corporate social responsibility (CSR) activities.

During the visit, we offered meals to the residents and spent time engaging with them, sharing warmth and care. It was a meaningful opportunity to connect with those in need and make a positive impact in their lives. We extend our special thanks to the management of Man Fut Tong Nursing Home for facilitating the visit and ensuring a smooth and welcoming experience.

At Eversafe, we believe in the importance of giving back and fostering compassion. Initiatives like this remind us of the value of community and the joy of sharing with others.



MD's Message

4. Preparing for EduTrust Recertification Audit

We have received the notification for our EduTrust recertification renewal. This marks the time for us to intensively prepare and compile all necessary evidence to demonstrate the high quality of our training and operations.

At Eversafe, we are committed to maintaining the highest standards in education and compliance. The upcoming audit provides an opportunity to review our processes, strengthen documentation, and reaffirm our dedication to delivering excellence to our learners.

Our team is focused on thorough preparation to ensure a smooth and successful recertification process.



Looking Ahead

As we close this 40th edition, I am proud of the collective efforts and achievements showcased in these pages. Our ongoing growth, unwavering commitment to quality, and contributions to the community underscore the strength and vision of Eversafe Academy.

Let us carry forward the energy, determination, and compassion highlighted in this edition. Together, we will continue to empower learners, uphold excellence in education, and make a meaningful impact on our communities. Here's to a year filled with progress, stability, and success for all!

WARM REGARDS,



R. MURUGESH
(MANAGING DIRECTOR)
EVERSAFE ACADEMY PTE LTD

Our Achievements

Since 2008

WE'RE PROUD TO REPORT THAT,
WE'VE SUCCESSFULLY TRAINED & CERTIFIED

941,770+

AS OF JANUARY 2026

Students



Features & Highlights

1. EA Safety Committee Initiatives: The EA Safety Committee consists of members of the EA Management Team and a panel of senior, highly experienced WSH trainers.

The committee oversees:

- Daily safety surveillance
- Routine safety reviews
- Compliance assurance across all four training branches

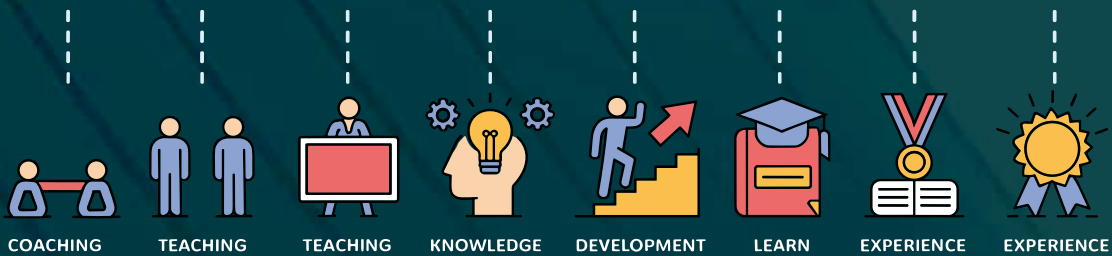
The monthly meeting for had placed on 30th January 2026 at Jookoon

The meeting was chaired by the Managing Director, Mr. Murugesh, alongside other committee members. The committee remains committed to strengthening safety governance and enhancing operational safety performance.



Features & Highlights

TRAINING



2. On 31st January 2026, Eversafe Academy conducted an Extracurricular Activities workshop titled “**Effective Communication Skills.**” The workshop engaged 20 participants and Students will develop confidence in speaking, improve their listening skills, and learn to communicate ideas clearly and professionally.

3. **Spoken English Classes:** During the month of January 2026, Eversafe Academy conducted Spoken English classes, through which 06 students gained essential Spoken English knowledge and practical Communication skills.

4. Eversafe Academy conducted a free **YOGA FOR HUMAN EXCELLENCE - FOUNDATION COURSE (Level -1)**-Tamil was held at little India at January Month.

Industry News & Trends

Critical Safety Analysis of Vehicular-Related Workplace Fatalities (December 2025)

Introduction and Incident Overview

2. On 31st January 2026, Eversafe Academy conducted an Extracurricular Activities workshop titled “**Effective Communication Skills.**” The workshop engaged 20 participants and Students will develop confidence in speaking, improve their listening skills, and learn to communicate ideas clearly and professionally.

Summary of Fatal Accidents

Worker Pinned Under Van (11 Dec 2025): A worker parked a delivery van on a service road with a slight gradient. After alighting, the van rolled backward, pinning him underneath. He succumbed to his injuries the following day.

Forklift Load Toppling (15 Dec 2025): While a forklift operator was lowering a stack of plywood, the unsecured and off-centre load toppled. A worker standing nearby was struck and pinned, dying later that day.

Scissor Lift Crush Injury (31 Dec 2025): An operator was reversing a scissor lift through a doorway while facing away from the direction of travel. His back struck the top of the doorway, leading to fatal injuries at the scene.

Operational Risks and Technical Failures Risk Assessment of Parking on Gradients

Parking on sloping ground significantly increases the hazard of unintended vehicle movement. The December 11 incident highlights the critical need for a "Safe Vehicle Parking" protocol.

Supplemental Controls: When parking on slopes is unavoidable, wheel chocks should be provided to block the tires and prevent rolling.

Industry News & Trends

Load Stability and Upstream Preparation

The forklift fatality revealed failures in how loads are prepared before lifting begins. The plywood was unsecured because original straps had been removed to facilitate a transfer.

Load Integrity: Forklifts are designed for palletized goods that are properly secured and centered on the forks.

Supplier Engagement: Companies should work with upstream suppliers to ensure goods are safely packed and secured with quality pallets that do not give way during transport.

Strategic Recommendations for Companies Strengthening WSH Management Systems

WSH Council calls on companies to review their safety management systems to cover equipment selection, operation, and maintenance.

- **Pre-Operation Checks:** Daily checks are mandatory to identify functional issues before equipment is used.
- **Preventive Maintenance:** Brakes and other critical components must be placed on a regular servicing program.
- **Safe Work Procedures (SWP):** Specific SWPs must be established for tasks like reversing in tight spaces or parking on public roads.



Industry News & Trends

Technological Interventions

To mitigate human error, companies should explore technological safeguards:

- Presence Detection: Installing overhead obstacle detectors on MEWPs can alert operators to imminent collisions.
- Secondary Guarding: Equipping scissor lifts with pressure-sensing bars or physical cages can reduce the risk of entrapment.
- Brake Warning Systems: Fleet vehicles can be fitted with systems that alert the driver if the cabin door is opened while the parking brake is disengaged.

Legal Implications and Professional Resources

Regulatory Penalties

Safety is a legal obligation under the Workplace Safety and Health Act. Failure to protect workers can result in severe penalties:



Corporate Entities:
First-time offenders face fines of up to \$500,000.



Individuals: Fines of up to \$200,000 and/or imprisonment for up to 2 years.



Industry News & Trends

Key Reference Standards

• **Professional WSH practitioners should consult these resources to align with national standards:**

- Forklifts: SS 573: 2012 Code of Practice for the Safe Use of Powered Counterbalanced Forklifts.
- MEWPs: SS 616: 2016 Code of Practice for Safe Use of Mobile Elevating Work Platform.
- Traffic Management: WSH Guidelines on Workplace Traffic Safety Management.



Industry News & Trends

Conclusion:

The fatalities of December 2025 illustrate that even fully lowered equipment or the presence of a banksman does not guarantee safety if basic rules such as facing the direction of travel or securing loads are ignored. Continuous supervision and hazard communication through toolbox meetings are essential to ensure that safe work procedures are strictly followed on-site.

References:

WSH Advisory on Vehicular-related Workplace Fatal Injuries in December 2025.
<https://www.tal.sg/wshc/-/media/tal/wshc/resources/newsletters/wsh-bulletins/files/wsh-advisory-on-vehicular-related-workplace-fatal-injuries-in-december-2025.pdf>



**MR. THANIKACHALAM
RAMESHKUMAR**



Head – Academic Department
Eversafe Academy Pte Ltd

Tech Bites

Safety in the Age of Smart Worksites: Preparing Workers for AI, Sensors and Wearable Tech

How emerging technologies from biometric wearables to virtual reality training are transforming workplace safety and redefining the role of human awareness in modern industrial environments.

Unlock the Future: Advancing with AI Excellence!

The Rise of Smart Worksites -

Modern workplaces are rapidly evolving into smart worksites, where digital technologies help prevent accidents before they occur. Instead of reacting after incidents happen, companies now use Artificial Intelligence (AI), smart sensors, and wearable devices to detect risks in real time.

From construction sites to manufacturing plants, these technologies are helping organizations create safer environments by continuously monitoring both workers and workplace conditions.

Tech Bites

Key Technologies Improving Workplace Safety



Wearable Safety Devices

Smart helmets, vests, and watches can monitor workers heart rate, body temperature, fatigue levels, and environmental exposure. If a worker experiences heat stress, exhaustion, or gas exposure, the device immediately sends alerts to supervisors.



AI and Computer Vision Monitoring

AI-powered cameras can automatically detect unsafe situations such as workers entering restricted zones or removing personal protective equipment (PPE). These systems provide real-time alerts, allowing supervisors to act quickly.



Exoskeletons for Worker Support

Wearable exoskeletons are increasingly used to assist workers with heavy lifting. By reducing strain on muscles and joints, these devices help prevent long-term injuries such as back pain and repetitive strain disorders.



Virtual Reality (VR) Safety Training

VR technology allows workers to experience simulated hazards such as fires, equipment failures, or falls in a safe digital environment. This immersive training improves hazard recognition and prepares workers for real-world emergencies.



Tech Bites

The Human Factor

Even the smartest technology cannot replace human awareness. One major challenge is “alert fatigue,” where workers begin ignoring safety warnings due to frequent notifications.

Another challenge is worker resistance to monitoring systems. Some employees may feel uncomfortable with wearable devices or AI cameras unless they clearly understand how the technology protects their safety.

For this reason, organizations must focus on training, transparency, and trust when introducing smart safety technologies.

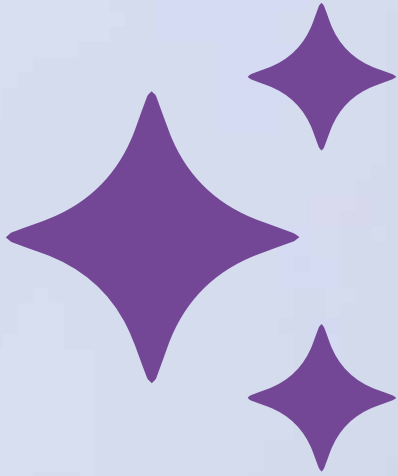
The Future of Workplace Safety

The future workplace will likely combine wearables, AI monitoring, drones, and smart sensors into a fully connected safety system. These technologies will help predict hazards earlier and prevent accidents before they occur.

However, technology alone is not enough. The safest worksites will be those where advanced technology works alongside well-trained and safety-conscious workers. In the age of smart worksites, true safety comes from the partnership between human awareness and intelligent technology.



Tech Bites



References:

Pandit, A. (2025). Integrating Wearable AI Technology for Construction Worker Safety. *International Journal on Science and Technology*.

Seo, J., Kim, H., & Lee, S. (2024). Wearable Technology and IoT Integration for Construction Safety Monitoring.

Industrial Build News. (2024). Smart Wearables Revolutionize Construction Site Safety.

Construction Placements. (2024). Smart Helmets and Wearable Technology Transforming Construction Safety.

Motivational Story

The Story of the Locked Treasure Box

A company once had a team that struggled with **coordination and teamwork**. Many employees believed that **their individual effort was enough**, while others came late to work or avoided responsibility. Because of this, their projects were often delayed. Their manager observed this behavior for some time. Instead of criticizing them, he decided to **teach them a practical lesson**.

One day, he called the entire team into the meeting hall. In the center of the room, there was a **large wooden treasure box with three locks on it**.

The manager said,

“Inside this box is a reward for the team. Whoever opens the box can take the reward.”

Immediately, one enthusiastic employee came forward. He tried to open the box, but he could not because **the box had three different locks**.

Another employee tried using force to open it, but the box was too strong.

Then the manager gave **three different keys** to three different employees in the team.

Each of them tried individually, but none of them could open the box because **each key opened only one lock**.

The team started realizing something.

Then the manager said,

“Now try it together.”

The three employees stood together. At the same time, they **used their keys together on the three locks**.

Click... Click... Click... The box **finally opened**.

Inside the box were **gift vouchers and snacks for the entire team**.

Everyone smiled and celebrated together.

The manager then said:

“This treasure box is like the success in your work.

Each of you has a unique key — **your skills, knowledge, and effort**.

But when you try to work alone, success stays locked.”

He continued,

“Only when you **coordinate, trust each other, and work together**, the locks open and success becomes possible.” From that day, the team understood that **no single person holds the complete key to success**.



Theme - Individual talent can start a task, but **teamwork completes it and brings success**.

By Mr. Rambu Paul Dhinakaran G
Senior Manager – Human Resources

Our Trainers

**OUR MD MR MURUGESH PRESENTED
THE MONTHLY TRAINER EXCELLENCY PATHWAY (TEP)**

CERTIFICATE OF APPRECIATION FOR DECEMBER 2025 EXEMPLAR TRAINER'S

**Full -Time
Trainers**



Mr. Affandy Westlake



Mr. Anwar Niazi Bin Mohamed



Mr. Arifur Rahman

**Associate
Trainers**



Mr. Chandra Segar



Mr. Anumanthasamy Asokan



Ms. Wang Yan



Testi- Monials

Endorsement of our Commitment to our **Student and Customers**,
Some of the endorsements and feedback from our **Valued Clients**.



Company Name-MH ENGINEERING PTE. LTD.
Company Incharge-Ananthi
Course Incharge-Ms Jaya

Excellent service and great support from Jaya. Everything was handled smoothly and professionally. Truly appreciate the help and positive attitude. Thank you for the wonderful assistance"



Company name-Setsco Services Pte Ltd.
Company incharge-Nur Sukayna
Course Incharge-Nivedha.N

Thank you for the prompt response and the seamless process. Appreciate your support. Would definitely recommend my network to Eversafe.



Company name-Nackco Engineering Pte Ltd.
Company incharge- Kalis
Course Incharge-Ms Ashwini

I truly appreciate your professionalism, promptness, and the way you have handled all my queries. Your dedication and helpful attitude have made the learning experience smooth and enjoyable.



Company name-Ad-Meth Mech-Field Pte Ltd
Company incharge-Moorthy Srikanth
Course Incharge-Ms Florance Divia

I appreciate the support and guidance you provided throughout the process. Your prompt responses and attention to detail made it easy for me to navigate the booking system. I felt well-informed and confident in my selections.



Testi- Monials

Endorsement of our Commitment to our **Student and Customers**,
Some of the endorsements and feedback from our **Valued Students**.



Student Name- Muhammadkhairi Bin Abdul Wahab
Course Name-wshmci
Course Incharge-Ms Jaya

I had a wonderful experience with Jaya from everSAFE. Thanks for being patient with me and answering all my doubts with clarity. Customer service I would rate 5/5!"



"Student Name-Jeff Teo"
Course Name-Awshpp
Course incharge name-Ms Florence divia

"Thank you for the great support and information. The service was friendly, quick and helpful which made the whole experience very smooth and pleasant."



Student Name-Kamsani
Course Name-MWAH
Course in charge -Ms Sengeni

Ms. Sengeni dedication, efficiency, and commitment to customer satisfaction are truly commendable and reflect positively on your organization. Thank you for fostering such a high standard of service within your team."



Student Name-VETRIVEERAN YAMINI
Course Name-DHRM
Course incharge -Ms Revathi

I truly appreciate the effort taken by Ms. Revathy to ensure everything was completed without any issues. Keep up the great



Health & Fitness Program

Hey,

Eversafe Academy Family!

A brand-new year has begun, and what better way to start than by staying active and energized!

January kicked off our Health Challenge with great enthusiasm, proving that a fresh year brings fresh motivation to keep moving.



Ezhil
624 209 STEPS



Bharathirajan
509 580 STEPS



Surya Prakash
446 325 STEPS

Fantastic effort from our top steppers! Let's keep the momentum going throughout the year—one step at a time.

Health Tips & Strategies

SIMPLE AND PRACTICAL DIET TIPS THAT CAN HELP REDUCE BELLY FAT

1. Start Your Day with Warm Water

Drink a glass of warm water with lemon in the morning. This helps improve digestion and metabolism.

2. Eat a Protein-Rich Breakfast

Include foods like:

- Eggs
- Sprouts
- Paneer
- Peanut butter
- Oats with nuts

Protein keeps you full for a longer time and reduces cravings.



3. Reduce Refined Carbohydrates

Try to limit foods such as:

- White rice (reduce quantity)
- White bread
- Bakery items
- Sugary snacks

Instead choose:

- Brown rice
- Millets (ragi, thinai, kambu)
- Whole wheat



4. Eat More Fiber

Fiber helps reduce belly fat by improving digestion and keeping you full.

Good sources:

- Vegetables (especially green leafy vegetables)
- Fruits like apple, papaya, guava
- Salads before meals

5. Avoid Sugary Drinks

Reduce or avoid:

- Soft drinks
- Sweet tea/coffee
- Packaged juices

These are major causes of belly fat.



6. Eat Small Portions

Instead of 3 heavy meals, try 4–5 smaller meals during the day.

This keeps metabolism active.

7. Early and Light Dinner

Eat dinner 2–3 hours before sleep and keep it light:

- Soup + vegetables
- Chapati with vegetables
- Salad + protein



8. Reduce Late Night Snacking

Eating late at night increases fat storage around the stomach.

9. Drink Enough Water

Drink 2.5–3 liters of water daily.

Sometimes the body mistakes thirst for hunger.

10. Include Healthy Fats

Healthy fats help control hunger:

- Nuts (almonds, walnuts)
- Seeds (flaxseed, chia)
- Avocado



Fun with Puzzle & Games

Occupational Diseases Quiz

Q1. Which government agency is primarily responsible for enforcing WSH laws in Singapore?

- A) Ministry of Education
- B) Ministry of Health
- C) Ministry of Manpower
- D) National Environment Agency

Q2. What is the most common occupational disease reported in Singapore?

- A) Skin cancer
- B) Silicosis
- C) Noise-induced deafness
- D) Heat stroke

Q3. Under WSH regulations, which of the following must an employer do when an occupational disease is diagnosed?

- A) Fire the worker
- B) Ignore it if it's minor
- C) Report it to MOM
- D) Conduct a workplace party

Q4. Silicosis is caused by long-term exposure to:

- A) Carbon monoxide
- B) Silica dust
- C) Asbestos
- D) High temperatures

Q5. Which of the following is NOT classified as an occupational disease?

- A) Occupational asthma
- B) Noise-induced hearing loss
- C) Common cold
- D) Contact dermatitis

Q6. Which of these occupations is most at risk of decompression sickness?

- A) Chef
- B) Office worker
- C) Commercial diver
- D) Taxi driver

Q7. What is the primary purpose of the Workplace Safety and Health Act?

- A) To regulate employee salaries
- B) To promote workplace safety and health
- C) To provide free healthcare to workers
- D) To monitor employment trends

Q8. Which of the following is a preventive measure for occupational asthma?

- A) Avoiding physical activity
- B) Wearing hearing protection
- C) Reducing exposure to allergens and irritants
- D) Taking antibiotics regularly

Q9. Which occupational disease is commonly associated with long-term exposure to loud noise?

- A) Tinnitus
- B) Asthma
- C) Hepatitis B
- D) Skin rash

Q10. What should employers do if workers are exposed to hazardous substances regularly?

- A) Provide free meals
- B) Monitor their productivity
- C) Send them for regular medical examinations
- D) Offer flexible work hours

Fun with Puzzle & Games



Fill the table with a suitable answer (A, B, C, D)

Question No	Answer
1	
2	
3	
4	
5	
6	
7	
8	
9	
10	

SCAN QR CODE TO SUBMIT YOUR COMPLETED MATCHING SAFETY PUZZLE

Please complete the matching quiz questions and Snap a Picture to upload via our QR Code with your details for a chance to win prizes.

CONDITIONS APPLY



Prizes



S\$ 50



S\$ 40



S\$ 30

LAST MONTH WINNERS (DECEMBER)



1st S\$50
ISLAM SHORIFUL



2nd S\$40
RAMALINGAM ARULKUMAR



3rd S\$30
GOVINDHARAJ SOWNDHARRAJAN



QUIZ DEVELOPED BY

Mr. Richard Sim
Academic Manager
Eversafe Academy Pte Ltd

Social Media Presence



Eversafe Academy reach and Impressions for **December 2025**

SOCIAL MEDIA VIEWS **#735**

MOBILE APP VIEWS **#31,412**

YOUTUBE IMPRESSION - 837



Eversafe Academy believes that creating awareness through Social Media can make a positive impact on the public and learning communities. Eversafe Academy has been producing helpful and informational videos on our YouTube Channel "Eversafe Academy".

Some of the recent videos posted on our channel are



01. Student Testimonial Videos

Testimonial videos are valuable for presenting positive student experiences, contingent on securing the necessary consent



2. Course Informational Videos

Create engaging informational videos detailing course content, duration, and fees to effectively promote in-demand skills and courses that significantly enhance career advancement across various industries.



3. General & Safety Videos:

Eversafe Academy published teacher-guided course overviews and a high-profile safety awareness video in January 2026.



Corporate Social Responsibility

Eversafe Academy continues its CSR initiative to promote the physical and mental wellbeing of migrant workers through a series of FREE Yoga Classes. Due to high demand and strong participant engagement, the Academy has launched another batch of sessions scheduled from February 2026 to April 2026. These sessions aim to help participants improve flexibility, reduce stress, and maintain overall health.

UPCOMING CLASS DATE

- 15th February 2026
- 22nd February 2026
- 01st March 2026
- 08th March 2026
- 15th March 2026
- 22nd March 2026
- 29th March 2026
- 05th April 2026



 Timing: 6:00 p.m. to 9:00 p.m.

As part of its effort to empower migrant workers with essential digital skills, Eversafe Academy will be conducting FREE Computer Classes. The aim of this program is to help participants acquire foundational computer literacy, enhancing their employability and enabling them to navigate digital platforms confidently.

UPCOMING CLASS DATE

- 12th April 2026
- 19th April 2026
- 26th April 2026
- 03rd May 2026
- 10th May 2026
- 17th May 2026



 Timing: 6:00 p.m. to 9:15 p.m.

EA Green Plan

Gardening in Office Front Spaces - Little India

Urban gardening in front of office buildings is an effective way to improve greenery and sustainability in cities. At **Eversafe Academy in Singapore**, fruit trees such as banana (*Musa spp.*), guava (*Psidium guajava*), and drumstick (*Moringa oleifera*) are cultivated and maintained in the garden area in front of the office building. This practice supports the goals of the Singapore Green Plan 2030, which promotes the vision of a **“City in Nature.”** Planting edible trees in office spaces helps to improve air quality, enhance the aesthetic environment, and reduce urban heat while also producing fresh fruits.

Proper maintenance practices such as regular watering, application of organic manure, soil care, and pruning are essential for the healthy growth of these plants. Such small-scale urban gardening efforts contribute to environmental sustainability and align with the broader objectives of the Singapore Green Plan 2030.



Latest EA Courses & Upcoming Events

Eversafe Academy is preparing to launch two new specialized programs designed to strengthen industry competencies and support emerging training needs.

Latest EA Course:

Effective Implementation Methodology for e-PTW Systems (EIPTW)



1. Safety Committee Meeting

- Date: 23rd February 2026
- Venue: Pioneer
- Purpose: Monthly review of safety operations and compliance across all EA training branches.

2. Workshop: “Time Management for Working Students”

- Date: 28th February 2026
- Venue: Zoom Platform
- Objective: To strengthen participants’ effective communication skills, enabling clearer expression and improved interpersonal interaction as part of EA’s Extracurricular Activities initiative.

3. Fresher’s Day

- Date: 11th February 2026
- Venue: Little India
- Purpose: Freshers’ Day is organized to formally welcome newly admitted Diploma students and help them integrate into the academic and institutional environment.

4. Special Chinese New Year Offer!

Eversafe Academy is conducting special holiday classes this Chinese New Year. Secure your seat with just a \$10 initial payment and make the most of your holidays by upgrading your skills. This is the perfect time to invest in your future and take a step forward in your career!

About Eversafe Academy

Eversafe Academy is a well-established training institute providing innovative training to meet the needs of the adult learners and PMETs of Singapore and regionally. We are one of the well-known Training Providers in the WSH sector, with a team of highly experienced and dedicated safety professionals who are trained and capable in the implementation of workplace safety, corporate loss control and regulatory compliance. We have a group of experienced engineers.

We shape the safety skill sets of workers, Supervisors and Managers to ensure that they have adequate knowledge to carry out their works safely. We also organize training for corporate companies.

We are also accredited with a 4-year EduTrust Accreditation quality standard mark as part of the recognition of our excellence in quality teaching and student experiences as a registered Private Education Institute.



4

Locations



160+

Courses



941,770

Trainees Trained



200+

Dedicated Staffs



26,259+

Corporate Clients

FOR MORE DETAILS:

WWW.EVERSAFE.EDU.SG

EA Sky Yoga



Scan QR to
View Our
Courses
in detail.

Visit our website for more details:

www.eversafe.edu.sg/yoga-home

Our Featured Courses:

1. YOGA FOR HUMAN EXCELLENCE – FOUNDATION COURSE
2. KAYAKALPA YOGA
3. INTROSPECTION COURSE (I, II & III)
4. CHILDREN YOGA
5. CERTIFICATE IN YOGA FOR HUMAN EXCELLENCE (CYHE)
6. DIPLOMA IN YOGA FOR HUMAN EXCELLENCE (DYHE)

**EVERSAFE ACADEMY
SKY MEDITATION CENTRE**
WCSC APPROVAL NO: WCSC/APP/SGP/054

SCIENCE OF UNIFIED LIVING

A revolutionary insight blending Ancient Indian Wisdom
and Contemporary Science

[Join Now](#)

Tamil & English
Language
Classes
Available!



For more info

Call: +65 6297-8417 | WhatsApp: +65 9381 3608

Join Us

OPEN POSITIONS

1. VIGILANCE OFFICER
2. CENTER IN CHARGE
3. FIELD MARKETING EXECUTIVE
4. ACCOUNTS EXECUTIVE
5. DIPLOMA TRAINERS
6. WSH TRAINERS

APPLY NOW



Email us your resume at
hr1@eversafe.com.sg

FOR MORE INFO CONTACT:
Call: (+65) 9059 6339
| www.eversafe.edu.sg





Island wide 4 Locations

LITTLE INDIA



No. 2, Kampong Kapur Rd,
Singapore 208674

JOO KOON



No. 2, Joo Koon Road,
Singapore 628966

PIONEER JUNCTION



No.3, Soon Lee Street, #04-14,
16,17, Pioneer Junction,
Singapore 627606

WAN LEE



No. 2, Wan Lee Road,
Singapore 627934

WE ARE
ALWAYS WITH YOU
FOR YOUR
TRAINING NEEDS

+65 6297 8417 www.eversafe.edu.sg
+65 9381 3608 training@eversafe.com.sg



TALK TO _____
OUR EXPERT!

Scan to Visit
Our Website

