

EA JOURNAL

ENGLISH

MARCH 2026 | 42ND ISSUE



EVERSAFE ACADEMY
Steps To Success



Topics inside

- SAFETY NEWS
- HEALTH TIPS
- TECH BITES
- LATEST COURSES
- JOB OPENINGS
- PUZZLE GAME
- UPCOMING EVENTS
- MOTIVATIONAL STORY

and more...

ENGLISH | MANDARIN | TAMIL | MALAY | BURMESE | BENGALI

CONTACT FOR MORE INFO:

(+65) 6297 8417 | (+65) 9381 3608

www.eversafe.edu.sg | training@eversafe.com.sg

SCAN THE QR
CODE TO READ
THE JOURNAL



Table of Content

	pg#
01 MD's Message	04
02 Our Achievements	07
03 Features & Highlights	08
04 Industry News & Trends	09
05 Tech Bites	13
06 Motivational Story	17
07 Our Trainers	19
08 Testimonials	20
09 Health & Fitness Programmes	22

VISION

Educate, Empower and Transform

MISSION

Quality, Innovation and Research

VALUES

Excellence, Life-Long Learning and Technological Advancement

pg#

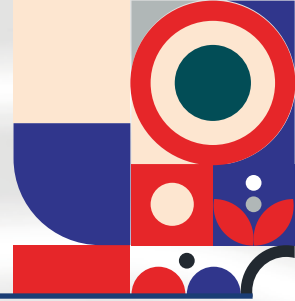
10	Health Tips & Strategies	23
11	Fun with Puzzle & Games	24
12	Social Media Presence	26
13	Corporate Social Responsibility - CSR Events	27
14	EA Green Plan	28
15	Latest EA Courses & Upcoming Events	29
16	About Eversafe Academy	30
17	EA Sky Yoga	31
18	Join Us	32

WE'LL KEEP YOU INFORMED WITH THE
NEWEST FACTS AND KNOWLEDGE.
PLEASE CONTINUE TO SUPPORT US.

SCAN THE QR
TO READ OUR ALL
JOURNAL ISSUES



1. MD'S MESSAGE



42ND ISSUE | EA JOURNAL

Dear Esteemed Readers, Greetings from Eversafe Academy!

The 42nd edition of our monthly journal for March 2026 reflects a month of steady progress and meaningful engagement at Eversafe Academy. March has been marked by key developments that align with our long-term vision of strengthening learning environments, enhancing organizational capabilities, and fostering a culture of continuous improvement across all areas of our operations.

1. Implementation of SMART Classrooms

As part of our smart classroom transformation initiative, smart TVs were implemented in all classrooms at our Head Office branch under Phase 1 of the project. The initiative will be expanded in four phases across all our locations, with full completion targeted by Q4 2026.

As technology and digital learning continue to evolve rapidly, it is important for us to modernize our classrooms to create a more interactive, engaging, and effective learning environment. The introduction of smart TVs will enhance lesson delivery, improve classroom interaction, and support modern teaching methods.

This initiative reflects our commitment to innovation and continuous improvement in providing quality learning experiences. Upon completion, all classrooms across our locations will be equipped with smart technology to support a consistent and future-ready learning environment.



31 SMART TV'S INSTALLED SO FAR

1. MD'S MESSAGE



42ND ISSUE | EA JOURNAL

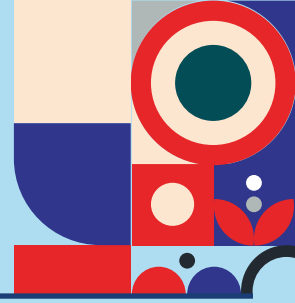
2. CSR Activity: Fire Drill at Woodlands Westlite Dormitory

As part of Eversafe Academy's CSR initiatives, Eversafe Academy conducted a fire drill at Woodlands Westlite Dormitory on 17 April at 2 Woodlands Sector 2, Singapore 737723. The session was led by our Senior Academic Manager and Marketing Manager to promote fire safety awareness and emergency preparedness among staff and residents.

The activity received active participation and strong support from the dormitory management and residents. We sincerely thank the management for the opportunity to conduct this meaningful safety awareness initiative. Eversafe Academy remains committed to contributing positively to the community through safety education and awareness programmes.



1. MD'S MESSAGE



42ND ISSUE | EA JOURNAL

3. Continuous Learning and Adaptability

In a world that is evolving at an unprecedented pace, the ability to continuously learn and adapt has become essential for both individuals and organizations. Change is no longer occasional—it is constant. In such an environment, success depends on how quickly we can embrace new ideas, acquire new skills, and apply knowledge in practical and meaningful ways.

At Eversafe Academy, we recognize that learning is not limited to classrooms or training sessions. It is a continuous journey that requires curiosity, openness, and a willingness to improve. When we stay receptive to change and actively seek growth, we build not only professional competence but also personal resilience.

Adaptability, in particular, plays a key role in sustaining progress. It allows us to respond effectively to challenges, explore better approaches, and remain relevant in a competitive landscape. Organizations that foster a culture of learning and adaptability are better positioned to innovate and thrive.

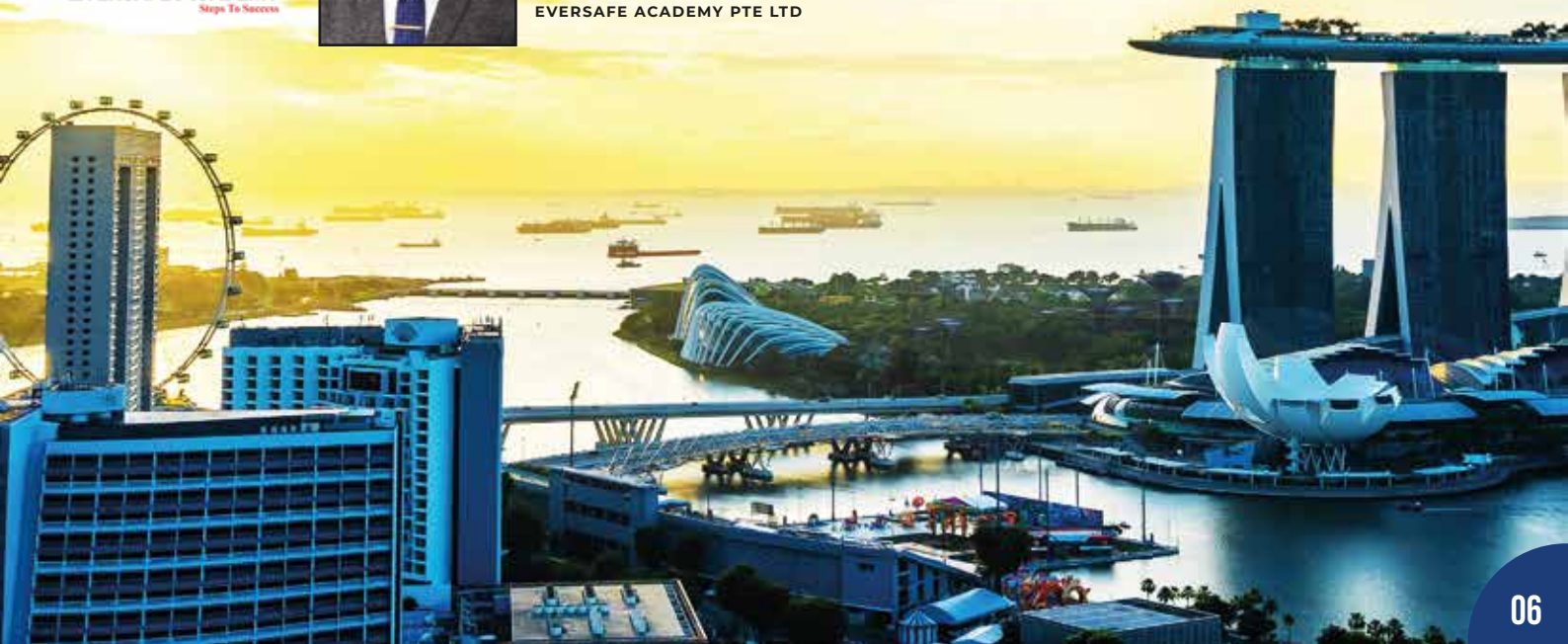
As we move forward, let us continue to strengthen our mindset of lifelong learning—where every experience becomes an opportunity to grow, and every challenge becomes a stepping stone towards improvement.

Looking Ahead

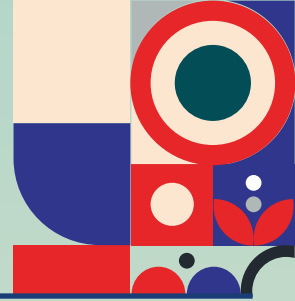
As we reflect on this edition, it is clear that our progress is driven by both innovation and intent. Each initiative undertaken this month contributes to building a stronger, more adaptive, and future-ready organization. Let us continue to uphold this momentum with commitment, focus, and a shared sense of purpose as we move forward together.



WARM REGARDS,
R. MURUGESH
(MANAGING DIRECTOR)
EVERSAFE ACADEMY PTE LTD



2. OUR ACHIEVEMENTS



42ND ISSUE | EA JOURNAL

Since 2008

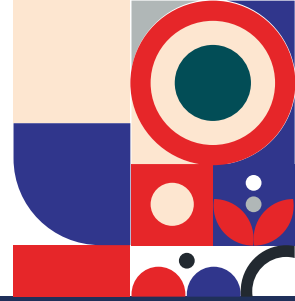
WE'RE PROUD TO REPORT THAT, AS OF MARCH 2026
WE HAVE SUCCESSFULLY TRAINED AND CERTIFIED

970,056+

STUDENTS.






3. FEATURES & HIGHLIGHTS



1. EA SAFETY COMMITTEE INITIATIVES:

The EA Safety Committee consists of members of the EA Management Team and a panel of senior, highly experienced WSH trainers.

The committee oversees:

-  Daily safety surveillance
-  Routine safety reviews
-  Compliance assurance across all four training branches

 **MONTHLY MEETING**
30TH MARCH 2026

 **LITTLE INDIA**

CHAIRD BY
 **MANAGING DIRECTOR**
MR. MURUGESH

The committee remains committed to strengthening safety governance and enhancing operational safety performance.

2. EXTRACURRICULAR ACTIVITIES WORKSHOP

 **28TH MARCH 2026**

TOPIC:
“WORKPLACE ETIQUETTE & PROFESSIONAL BEHAVIOUR”



 **23 PARTICIPANTS**

STUDENTS WILL DEVELOP:

- Confidence in Speaking
- Improve Listening Skills
- Communicate Ideas Clearly & Professionally

3. FREE SPOKEN ENGLISH PROGRAM

 **MARCH 2026**

 **19 STUDENTS**

STUDENTS GAINED:

- Improved Communication Skills
- Essential Computer Knowledge
- Practical Digital Skills



4. YOGA FOR HUMAN EXCELLENCE

FOUNDATION COURSE (LEVEL - 1)

TAM & SKY INTROSPECTION TAM - 01

 **PIONEER**

 **MARCH 2026**



- Enhances Physical Well-being
- Improves Mental Clarity
- Promotes Self-Development (Introspection Training)

5. HARI RAYA PUASA SPECIAL CLASS OFFER



Eversafe Academy proudly conducted Special Holiday Classes during the Hari Raya Puasa, and the session was a great success.



- Strong Student Participation
- Productive Learning Sessions
- Positive Impact and Engagement



Machinery Safety and Lockout Tagout (LOTO) Management.

The Critical Imperative for Machine Safety Statistical Context and Industry Trends

The need to improve machine safety rules comes from recent national data. In 2024 and 2025, there were two deaths and 142 serious injuries caused by machines. These numbers show that working with machines still carries big risks, especially in industries that depend heavily on them.

High-Risk Operational Interfaces

Accidents often occur during non-routine tasks where workers must interface closely with equipment. These critical activities include:

Inspection: Checking for wear, alignment, or operational integrity.

Cleaning: Removing debris or buildup that could affect machine performance.

Repair and Maintenance: Invasive technical work to restore or sustain machine functionality.

The Nature of the Hazard:

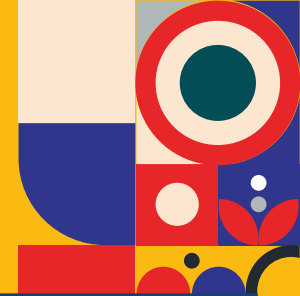
The primary danger during these activities is the unexpected machine start-up or the sudden release of stored energy. Without proper isolation, a worker can be caught in moving parts or struck by discharged energy.

Foundational Elements of LOTO Management

Defining the LOTO Procedure

Lockout Tagout (LOTO) is a systematic procedure designed to ensure all hazardous energy sources—electrical, mechanical, pneumatic, or hydraulic—are isolated before work begins. This isolation prevents the machine from being energized or activated during the task.

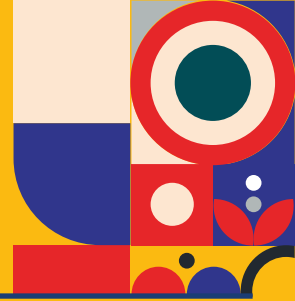




Administrative Framework and Training

A robust LOTO system requires more than hardware; it requires a structured management approach:

- **Safe Work Procedures (SWP):** Companies must develop specific SWPs for energy isolation.
- **Singapore Standard 571:** SS 571:2011 serves as the national reference for developing compliant SWPs.
- **Training and Competency:** All workers tasked with machine maintenance or repair must be thoroughly trained on these LOTO procedures.
- **Stakeholder Notification:** Affected workers must be notified before a machine is shut down or placed in LOTO status.



Technical Execution of Energy Isolation Comprehensive Hazard Identification

Before applying locks, all energy sources must be identified. This includes not just the primary power source, but all forms of stored energy:

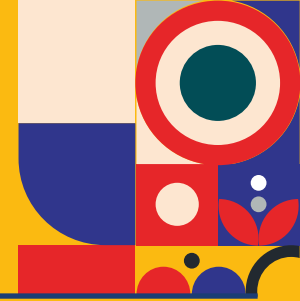
- Electrical: Power lines and control panels.
- Mechanical: Stored kinetic energy or gravity-held components.
- Pneumatic and Hydraulic: Pressurized air or fluid systems.

The Isolation Process

1. **Identify Isolating Devices:** Locating switches, valves, or levers that control the energy flow.
2. **Apply Physical Locks:** Each isolating device must be locked out to ensure the energy source cannot be accidentally restored.
3. **Install Warning Signs:** Signs such as "DANGER: MACHINE UNDER MAINTENANCE" must be placed to alert other personnel.
4. **Effective Tagging:** Tags must be applied to indicate the name of the worker, the department, the reason for the lockout, and the expected completion date.



4. INDUSTRY NEWS & TRENDS



42ND ISSUE | EA JOURNAL

Advanced Controls and Verification

Group Lockout and Specialized Equipment

In complex scenarios where multiple workers are involved, standard locking may be insufficient:

- **Group Lock Boxes:** Used when several workers service the same machine simultaneously; every worker places their own lock on the box to ensure the machine stays off until everyone is clear.
- **Hasps:** Allows multiple individual locks to be applied to a single energy isolating device.
- **Plug Lockouts:** Essential for cord-and-plug machines where the plug is not under the worker's exclusive control or is in a shared area.

The Final Verification Protocol

No work should begin without verifying the success of the lockout:

- **State Verification:** Confirming the machine is in the "OFF" state.
- **Testing:** Attempting to switch the machine on while the locks are in place to prove it cannot be energized.

Resources and Reference Standards:

WSH Insights (April 9, 2026): Working Safely with Machines: Strengthening Lockout Tagout Practices.
<https://www.tal.sg/wshc/resources/newsletters/wsh-insights/wsh-insights-09-april-2026-working-safely-with-machines-strengthening-lockout-tagout-practices>

WSH National Statistics Report 2025.

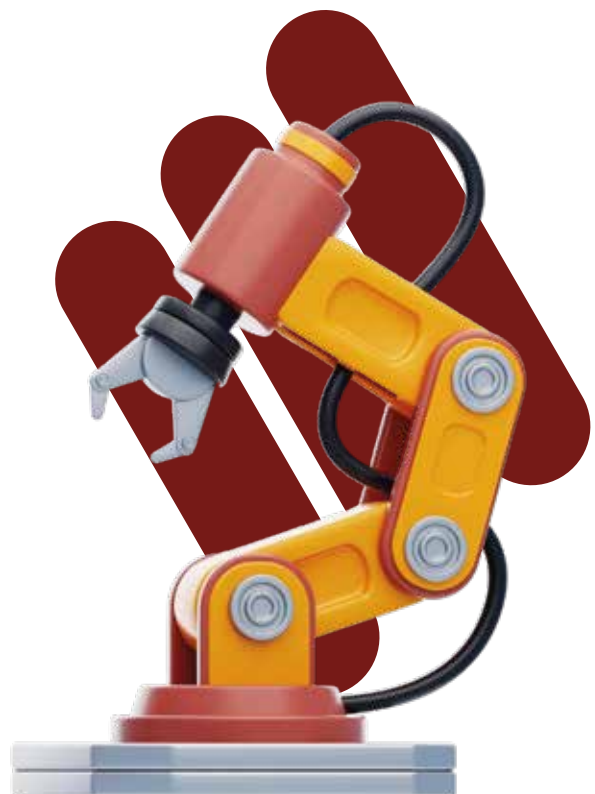
For continued compliance, companies should leverage the following resources:

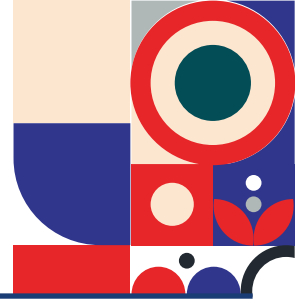
- WSH (General Provisions) Regulations and WSH (Risk Management) Regulations.
- WSH Council Guidelines: Technical advisories for power presses, press brakes, and safe machine startup.



Mr. Thanikachalam Rameshkumar

Head – Academic Department
Eversafe Academy Pte Ltd.





The Zero-Incident Horizon: Transforming Workplace Risk with Intelligent Systems

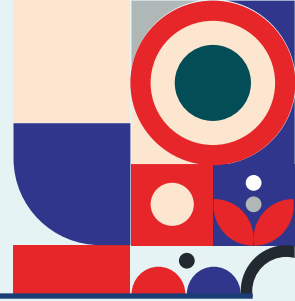


Traditionally, workplace safety has always followed the “compliance cycle,” which involves conducting training sessions annually, performing safety inspections, and reporting any incidents that may occur during the year. Although these practices have significantly decreased workplace deaths over the years, they have remained largely reactive. Instead of counting on what has occurred in the past, the combination of AI and LLMs is completely changing the definition of safety.

For safety practitioners and leaders, this evolution marks the single biggest advancement in the field of occupational health and safety (OHS).

The New Era of Intelligent Guidance

The most significant disadvantage associated with classic safety programs is that they tend to be too “static.” This means that workers are required to know a lot of information about the policies in large manuals and have difficulties applying the safety rules in practice in the context of the dynamically changing conditions of an active workplace.



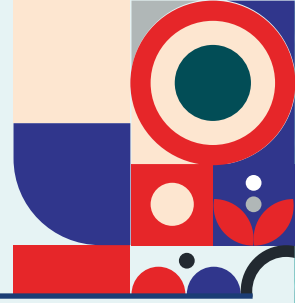
Intelligent Knowledge Retrieval: The worker does not have to spend hours flipping through a 200-page PDF but will have the option of interacting with the system using natural language processing technology by asking, "I am going into a confined space containing these particular chemicals, what are my required ventilation parameters?" The LLM will respond immediately based on the company's regulations and policies.

Behavioral Coaching: AI-driven video analytics can identify unsafe behaviors—such as improper lifting techniques or the failure to use a harness—at the moment they occur. Rather than waiting for a monthly report, supervisors can provide "just-in-time" coaching, correcting the behavior before it results in a chronic injury.



BUILDING A PROACTIVE SAFETY ARCHITECTURE

1. **Risk Profiling:** AI algorithms analyze historical incident data to predict which shifts, zones, or specific tasks are statistically most likely to experience a safety breach, allowing managers to allocate resources (like extra supervisors or specialized equipment) accordingly.
2. **Environmental Awareness:** In high-hazard industries, AI integrates with onsite sensors to monitor air quality, noise levels, or structural integrity in real-time. If the system detects a micro-trend indicating a potential failure, it triggers automated alerts before an alarm is even necessary.
3. **Hazard Identification:** Modern AI vision systems map a workspace and identify environmental hazards—such as blocked fire exits, spills, or machinery guards that have been bypassed—providing instant notifications to safety teams.



Visualizing the Future

Imagine an image of a modern industrial control room: A sleek, digital dashboard displaying a 3D digital twin of a factory floor. Heat maps overlay the layout in shades of blue to red, indicating risk levels. A supervisor is wearing AR glasses, looking at a piece of machinery that is highlighted with real-time performance metrics and a "Safety OK" status, while a small, unobtrusive interface in the corner displays real-time environmental data.

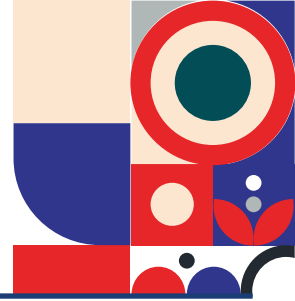


The Human Element: Responsibility and Trust

Despite technological sophistication, workplace safety remains an inherently human challenge. The introduction of AI tools creates new responsibilities for leadership:

Transparency over Surveillance: To be successful, organizations must focus on support and protection. When workers see AI as a tool that helps them return home safe, rather than a tool used to monitor them, they become active participants in the safety culture.

The Decision-Support Model: AI is an incredible consultant, but it cannot replace the human intuition required for complex risk assessment. Leadership must ensure that AI outputs are treated as decision-support tools, not final authority. Final accountability for a safe work environment must always rest with human stakeholders who can interpret the "why" behind the data.



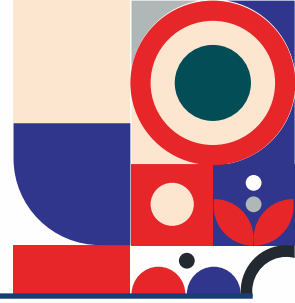
Conclusion: A Safer Future

The use of AI at work is not aimed at removing the human aspect of safety but rather at enhancing it. By changing safety from an occasional task into a consistent, smart, and forward-looking process, companies will be able to shorten the time between incidents and prevention dramatically. By enabling each person at the workplace to receive actionable intelligence about safety-related information, we will get one step closer to achieving the dream of every safety expert—preventing accidents rather than managing them.



References

- Arinite (2026).** AI in Health & Safety: Complete Guide 2026. Accessed via arinite.com.
- ComplianceQuest (2025).** Top EHS Trends 2026: AI, Predictive Safety and Compliance. Whitepaper.
- Fisher Phillips (2025).** Artificial Intelligence for the Safety Professional – Benefits, Risks, and Legal Implications.
- HireQuest Inc. (2025).** 2026 Safety Priorities: Heat, Tech, and Predictive Safety Culture.
- Trainingcred Institute (2025).** Occupational Health & Safety in the Age of AI: A Strategic and Data-Driven Imperative for Modern Workplaces.



THE POWER OF CHOICE



Once upon a time, there lived a young man named Alfred in a peaceful village. Everyone in the village knew him as a kind-hearted person, but deep inside him, there was always a silent battle taking place.

Inside every human being, there are two invisible seeds planted by God – one seed of good character and one seed of bad character.

The good seed carried qualities like kindness, patience, honesty, forgiveness, discipline, love, and compassion.

The bad seed carried anger, jealousy, greed, laziness, hatred, pride, and dishonesty.

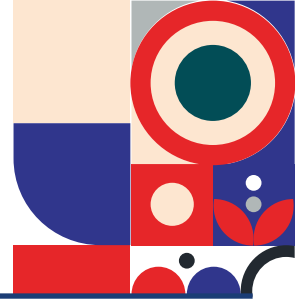
Both seeds lived inside Alfred's heart.

One day, an old wise man in the village told him:

“The seed you water every day will become the tree that controls your life.”

At first, Alfred did not understand those words.

6. MOTIVATIONAL STORY



42ND ISSUE | EA JOURNAL

WHENEVER SOMEONE INSULTED HIM, HE HAD TWO CHOICES:

- To respond with patience and understanding
- Or to react with anger and hatred

WHENEVER HE SAW OTHERS SUCCEED, HE HAD TWO CHOICES:

- To appreciate and learn from them
- Or to become jealous and bitter

WHENEVER HE FACED DIFFICULTIES, HE HAD TWO CHOICES:

- To work hard with hope
- Or to give up in laziness and negativity



Slowly, Alfred realized something important.

Every thought, every action, and every decision was watering one of the two seeds inside him.

On the days he chose kindness, peace grew in his heart.

On the days he chose anger, darkness grew stronger.

As years passed, he noticed that good habits made him happier, respected, peaceful, and loved by others. The more importance he gave to good character, the weaker his bad habits became. His patience slowly killed his anger. His honesty defeated dishonesty. His love destroyed hatred.

But he also saw some people in the village constantly feeding their bad character. They gave importance to greed, ego, jealousy, and lies. Slowly, those bad qualities grew so much that they destroyed the goodness inside them. Their relationships broke, their peace disappeared, and happiness left their lives.

One evening, Alfred returned to the old wise man and said:

“Now I understand. Good and bad both live inside every human being. The one we feed becomes stronger.” The wise man smiled and replied:

“God has given every human being the greatest gift — the power of choice. He does not force anyone to become good or bad. Every day, through our choices, we decide who we become.”

From that day onward, Alfred became more careful with his thoughts, words, and actions. He understood that a happy life is not built in one day, but through wise choices made every single day. And the truth remains the same for all human beings:

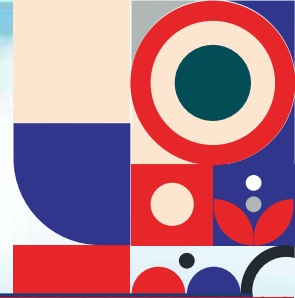
- When we give importance to good character, it grows within us and destroys the bad.
- When we feed bad character, it grows and slowly destroys all the goodness inside us.

Therefore, life becomes beautiful when we choose wisdom, kindness, honesty, love, and goodness.

BECAUSE THE POWER OF CHOICE IS IN OUR HANDS.

By – Rambu Paul Dhinakaran G
Senior Manager – Human Resources

7. OUR TRAINERS



**OUR MD MR MURUGESH PRESENTED
THE MONTHLY TRAINER EXCELLENCY PATHWAY (TEP)**

**CERTIFICATE OF APPRECIATION
FOR FEBRUARY 2026 EXEMPLAR TRAINER'S**

FULL TIME TRAINERS

ASSOCIATE TRAINERS



EVERSAFE ACADEMY

1



**ANWAR NIAZI
BIN MOHAMED**

1



**ARUMUGAM
SUBRAMANI**

2



**MOHAMED ALI
BIN TAIB**

2



**CHANDRA
SEGAR**

3



**RAMZAN HOSEN
BHUIA**

3



**AHSANUL
KABIR**



8. TESTIMONIALS (CLIENTS)

Endorsement of our Commitment to our **Student and Customers**,
Some of the endorsements and feedback from our **Valued Clients**.



Company name - BOON CHANG STRUCTURE PTE LTD
Company incharge - Tina Lew
Course Incharge - Florence Divia



Thank you for your assistance and support throughout the process, it has been much appreciated. Your service has been prompt and professional, and it has been a pleasure working with you.



Company name - WSH EXPERTS PTE. LTD
Company incharge - Gayathri
Course Incharge - Ms Ashwini



Thank you for your excellent service in managing the PWAH course registration. You have been very helpful and prompt throughout the process, making the booking and change requests seamless



Company name - ADDCEL ENGINEERING PTE LTD
Company incharge - Sher Le
Course Incharge - Ms Florence divia



I truly appreciate the excellent service you provided. Florance was attentive, professional, and made the entire experience smooth and pleasant.



Company name - U&P Pte Ltd
Company incharge - Jayden
Course Incharge - Ms Ashwini



We truly appreciate your prompt response despite the short notice for our course booking. It has been a smooth and pleasant experience working with you and your team, and we're grateful for your efficiency and professionalism. Keep up the good work!



8. TESTIMONIALS (STUDENTS)

Endorsement of our Commitment to our **Student and Customers**,
Some of the endorsements and feedback from our **Valued Students**.

Student Name - HOSSAIN SELIM
Course Name - WSHMC
Course Incharge - Jayal



I am really happy to be admitted to your training center, your service is very good, thank you very much. Your trading center is very good and you all are very good you treat people very well



Student Name - MOORTHY VIVEK
Course Name - MWSHCS
Course incharge name - Shenbagam



I would like to thank Shenba for the excellent support and assistance throughout my MWSHCS course booking and completion process. Shenba was very helpful, responsive, and professional in handling my queries. I truly appreciate the smooth and pleasant experience.



Student Name - KALAI SELVAN
Course Name - MWSHCS
Course in charge - Shenbagam



Hi Shenba, Thank you for your support and assistance throughout the MWSHCS course arrangement. Your coordination and prompt communication made the process smooth and well organized.



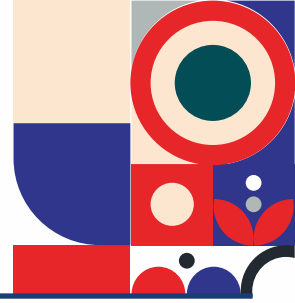
Student Name - SUMANTI BIN YAN
Course Name - WSHMCI
Course incharge - Ms Jaya



I would like to take this opportunity to thank you for the excellent service you have provided. Your professionalism, responsiveness, and attention to detail are truly appreciated. It has been a pleasure working with you, and I am very satisfied with the support received.



9. HEALTH & FITNESS PROGRAM



42ND ISSUE | EA JOURNAL



March was all about building momentum! As routines got busier and temperatures started rising, our Health Challenge champions still found time to stay active and committed. From early morning walks to evening step goals, every move counted this month.



Ezhil
559,881 Steps



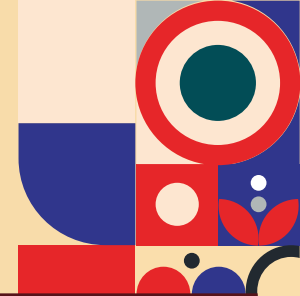
Shenbagam
526,922 Steps



Sabari
418,493 Steps

A huge shoutout to all participants for making health a priority despite busy schedules. Small steps each day create big results over time—and this month proved it once again.

Let's carry this energy forward into April and keep striving for a healthier, stronger lifestyle together!



DETOXIFICATION AND REPAIR PROCESSES

During sleep, especially at night, our body naturally performs many detoxification and repair processes. **The most important detox time generally happens between 10:00 PM and 4:00 AM**, when the body is deeply resting.

Here's how the body works during sleep:

•10 PM – 2 AM:

The liver becomes highly active in removing toxins from the body and purifying the blood.

•2 AM – 4 AM:

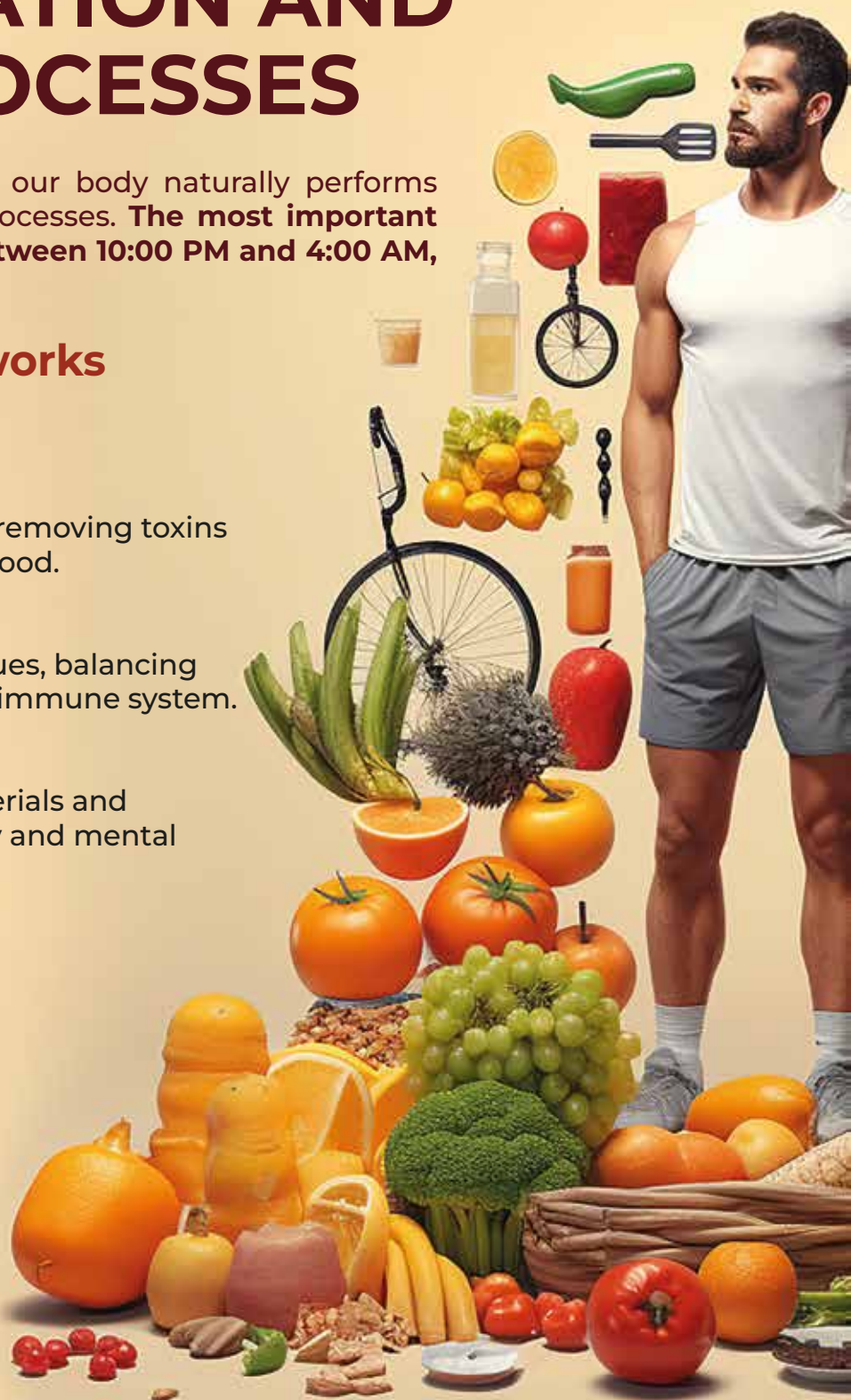
The body focuses on repairing tissues, balancing hormones, and strengthening the immune system.

•During deep sleep:

The brain also removes waste materials and refreshes itself, improving memory and mental health.

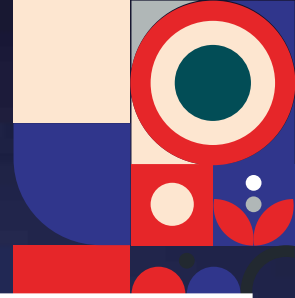
To support natural detoxification:

- Sleep early and get 7–8 hours of proper sleep
- Drink enough water
- Avoid heavy meals late at night
- Reduce junk food, alcohol, and smoking
- Exercise regularly
- Eat fruits and vegetables rich in fiber



Our body already has a powerful detox system created naturally through the liver, kidneys, lungs, skin, and digestive system. Good sleep and healthy habits help these organs function properly and keep us healthy.

11. FUN WITH PUZZLE & GAMES



42ND ISSUE | EA JOURNAL

CONSTRUCTION SAFETY QUIZ

1. WHAT IS THE PRIMARY LEGISLATION GOVERNING WORKPLACE SAFETY AND HEALTH IN SINGAPORE?

- A. OCCUPATIONAL SAFETY ACT
- B. WORKPLACE HEALTH ACT
- C. WORKPLACE SAFETY AND HEALTH ACT
- D. ENVIRONMENTAL PROTECTION ACT

2. WHICH OF THE FOLLOWING IS A KEY RISK IN WORKING AT HEIGHT?

- A. DUST EXPOSURE
- B. ELECTROCUTION
- C. FALL FROM ELEVATION
- D. HEAT STROKE

3. WHAT IS THE MINIMUM HEIGHT AT WHICH FALL PROTECTION IS REQUIRED IN SINGAPORE CONSTRUCTION SITES?

- A. 1 METRE
- B. 2 METRES
- C. 3 METRES
- D. 4 METRES

4. WHO IS RESPONSIBLE FOR ENSURING THAT A RISK ASSESSMENT IS CONDUCTED BEFORE STARTING ANY WORK ACTIVITY?

- A. WORKER
- B. SAFETY COORDINATOR
- C. EMPLOYER/COMPANY
- D. CLEANER

5. WHICH EQUIPMENT IS ESSENTIAL WHEN WORKING IN A NOISY CONSTRUCTION ENVIRONMENT EXCEEDING PERMISSIBLE NOISE LIMITS?

- A. GLOVES
- B. EAR PROTECTION
- C. SAFETY GOGGLES
- D. HARNESS

6. WHAT IS THE PURPOSE OF A PERMIT-TO-WORK (PTW) SYSTEM?

- A. TO REDUCE PAPERWORK
- B. TO ALLOW WORKERS TO SIGN IN
- C. TO ENSURE HIGH-RISK WORK IS CONTROLLED AND APPROVED
- D. TO MONITOR ATTENDANCE

7. WHICH OF THE FOLLOWING IS NOT CONSIDERED A CONFINED SPACE?

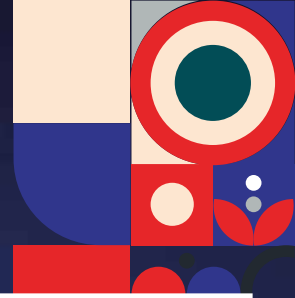
- A. TUNNEL
- B. OPEN YARD
- C. MANHOLE
- D. SEWER

8. WHAT IS THE MOST EFFECTIVE CONTROL MEASURE IN THE HIERARCHY OF CONTROLS?

- A. PPE (PERSONAL PROTECTIVE EQUIPMENT)
- B. ADMINISTRATIVE CONTROLS
- C. ELIMINATION
- D. ENGINEERING CONTROLS



11. FUN WITH PUZZLE & GAMES



9. WHY ARE TOOLBOX MEETINGS CONDUCTED AT CONSTRUCTION SITES?

- A. TO PLAN WORKERS' LUNCH BREAKS
- B. TO DISCUSS SPORTS EVENTS
- C. TO BRIEF WORKERS ON SAFETY ISSUES AND DAILY RISKS
- D. TO CONDUCT SOCIAL ACTIVITIES

10. WHICH OF THE FOLLOWING IS AN EXAMPLE OF A MECHANICAL HAZARD?

- A. DUST EXPOSURE
- B. LOUD NOISE
- C. MOVING MACHINERY PARTS
- D. HIGH TEMPERATURE

FILL THE TABLE WITH A SUITABLE ANSWER (A, B, C, D)

Question No	Answer
1	
2	
3	
4	
5	
6	
7	
8	
9	
10	

SCAN QR CODE TO SUBMIT YOUR COMPLETED MATCHING SAFETY PUZZLE

Please complete the matching quiz questions and Snap a Picture to upload via our QR Code with your details for a chance to win prizes.



LAST MONTH WINNERS



1ST S\$50
SAKIB HASAN



2ND S\$40
RENGASAMY MUNIYAMUTHU



3RD S\$30
RAMALINGAM ARULKUMAR



RICHARD SIM
ACADEMIC MANAGER
EVERSAFE ACADEMY

12. SOCIAL MEDIA PRESENCE

42ND ISSUE | EA JOURNAL

Eversafe Academy reach and Impressions for March 2026

SOCIAL MEDIA VIEWS

#1491

MOBILE APP VIEWS

#31,412



YOUTUBE IMPRESSION - 837



Eversafe Academy believes that creating awareness through Social Media can make a positive impact on the public and learning communities. Eversafe Academy has been producing helpful and informational videos on our YouTube Channel "Eversafe Academy".

Some of the recent videos posted on our channel are



1. Animated Awareness video

Empowering learners through modern media, Eversafe Academy introduced a dynamic, high-profile safety awareness video and teacher-led guides in March 2026. This initiative highlights vital workplace safety practices and promotes the return of tools to their proper alignment.



2. Course Informational Videos

Our newly launched Course Informational Videos combine classroom-level insights with real-world applications to maximize student engagement. This modern approach ensures learners fully grasp the benefits and safety standards of each specialized program before enrollment.

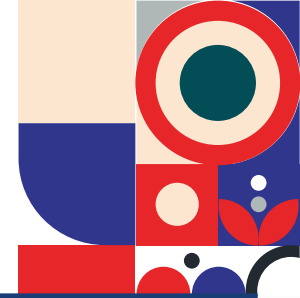


3. General & Safety Videos:

The newly introduced General & Safety Videos offer an interactive look at core risk-assessment methods and vital safety standards. This dynamic visual initiative strengthens Eversafe Academy's commitment to delivering safety-first technical training.



13. CORPORATE SOCIAL RESPONSIBILITY - CSR EVENTS



42ND ISSUE | EA JOURNAL

1. FREE Yoga Classes for Migrant Workers

Eversafe Academy continues its CSR initiative to promote the physical and mental wellbeing of migrant workers through a series of FREE Yoga Classes. Due to high demand and strong participant engagement, the Academy has launched another batch of sessions scheduled from March 2026 to April 2026. These sessions aim to help participants improve flexibility, reduce stress, and maintain overall health.

SCHEDULED DATES:

- 17th April 2026
- 24th April 2026
- 01st May 2026
- 08th May 2026
- 15th May 2026
- 22nd May 2026
- 29th May 2026
- 05th June 2026
- 12th June 2026
- 19th June 2026
- 26th June 2026
- 03rd July 2026

Timing: 6:00 pm to 9:00 pm



Location for Free Yoga & Computer Classes :

Little India Branch, 2 Kampong Kapur Road, Singapore 208674
Contact: +65 6297 8417 Email ID: training@eversafe.com.sg

2. Computer Class for Migrant Workers

As part of its effort to empower migrant workers with essential digital skills, Eversafe Academy will be conducting FREE Computer Classes. The aim of this program is to help participants acquire foundational computer literacy, enhancing their employability and enabling them to navigate digital platforms confidently.

SCHEDULED DATES:

- 14th June 2026
- 21st June 2026
- 28th June 2026
- 05th July 2026
- 12th July 2026
- 19th July 2026

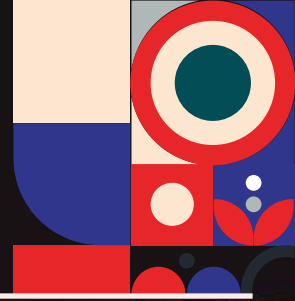
Timing: 6:00 pm to 9:00 pm

3. Awami Home at woodlands food sponsoring

Date: 24th April 2026 Location: Awami Home

This initiative underscores the Academy's dedication to community wellbeing and reinforces its role as a responsible corporate citizen.





DIGITAL QUALITY AUDITING SYSTEM

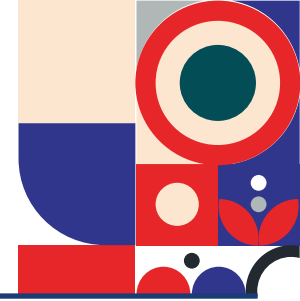


The Digital Quality Auditing System

under the Green Plan Initiative represents a forward-looking approach to embedding sustainability within institutional and operational practices. By integrating tools such as NAS (Network Attached Storage) folders and the SSQA (Secure System for Quality Assurance), the system enables centralized, secure, and paperless management of audit records and quality documentation. NAS folders facilitate efficient digital storage and retrieval, reducing reliance on physical documents, while SSQA ensures structured workflows, data integrity, and compliance through secure, automated integrated processes.

This initiative also directly supports the goals of the Singapore Green Plan 2030 by promoting sustainable practices through technology-driven innovation. The use of Digital Quality Auditing System, supported by NAS and SSQA systems, contributes to key pillars such as Sustainable Living and Green Economy by lowering resource consumption, improving energy efficiency, and fostering a culture of digital accountability.

15. LATEST EA COURSES & UPCOMING EVENTS



42ND ISSUE | EA JOURNAL

Eversafe Academy is preparing to launch two new specialized programs designed to strengthen industry competencies and support emerging training needs.

1. Safe Cargo Loading, Securing and Transport Compliance (SLSTC) - EA Professional
2. Safe Loading and Unloading Goods on Vehicles (SLUV) - EA Worker
3. Effective LOTO Implementation & Techniques (ELIT) - EA Supervisor

UPCOMING EVENTS

1

Safety Committee Meeting

- Date: 27th April 2026 | •Venue: Wan lee
- Purpose: Monthly review of safety operations and compliance across all EA training branches.

2

Workshop: "Stress Management & Emotional Well-being"

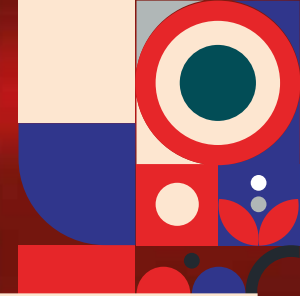
- Date: 25th April 2026 | •Venue: Zoom Platform
- Objective: To understand and apply effective techniques for managing stress and maintaining emotional well-being in daily life.

3

Special Classes for "Labor Day"

- Dates: 01 May 2026
- Eversafe Academy is conducting special holiday classes during Labor Day
- Secure your seat with just a \$10 initial payment.
- A great opportunity to upgrade your skills during the holidays and invest in your future career.

16. ABOUT EVERS SAFE ACADEMY



42ND ISSUE | EA JOURNAL

Eversafe Academy is a well-established training institute providing

innovative training to meet the needs of the adult learners and PMETs of Singapore and regionally. We are one of the well-known Training Providers in the WSH sector, with a team of highly experienced and dedicated safety professionals who are trained and capable in the implementation of workplace safety, corporate loss control and regulatory compliance. We have a group of experienced engineers.

We shape the safety skill sets of workers, Supervisors and Managers to ensure that they have adequate knowledge to carry out their works safely. We also organize training for corporate companies.

We are also accredited with a 4-year EduTrust Accreditation quality standard mark as part of the recognition of our excellence in quality teaching and student experiences as a registered Private Education Institute.



2008

Year Established



170+

Courses



200+

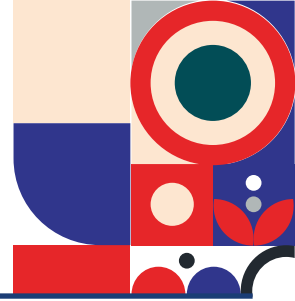
Dedicated Staffs



23k+

Corporate Clients

17. EA SKY YOGA



42ND ISSUE | EA JOURNAL

**EVERSAFE ACADEMY
SKY MEDITATION CENTRE**

WCSC APPROVAL NO: WCSC/APP/SGP/054

**SCIENCE OF
UNIFIED LIVING**

A revolutionary insight blending Ancient Indian Wisdom
and Contemporary Science

[Join Now](#)





Scan QR to
View Our
Courses
in detail.

Visit our website for more details:

www.eversafe.edu.sg/yoga-home

Our Featured Courses:

1. YOGA FOR HUMAN EXCELLENCE – FOUNDATION COURSE
2. KAYAKALPA YOGA
3. INTROSPECTION COURSE (I, II & III)
4. CHILDREN YOGA
5. CERTIFICATE IN YOGA FOR HUMAN EXCELLENCE (CYHE)
6. DIPLOMA IN YOGA FOR HUMAN EXCELLENCE (DYHE)



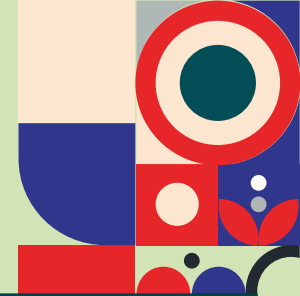
Tamil & English
Language
Classes
Available!



For more info

Call: +65 6297-8417 | WhatsApp: +65 9381 3608

18. JOIN US



42ND ISSUE | EA JOURNAL

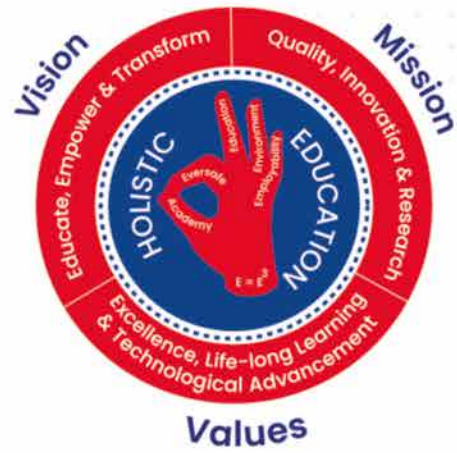


1. VIGILANCE OFFICER
2. CENTER IN CHARGE
3. FIELD MARKETING EXECUTIVE
4. DIPLOMA TRAINERS
5. WSH TRAINERS

Email us your resume at
hrl@eversafe.com.sg

FOR MORE INFO CONTACT:

Call: (+65) 9059 6339 | www.eversafe.edu.sg



Island wide 4 Locations

LITTLE INDIA



No. 2, Kampong Kapur Rd,
Singapore 208674

JOO KOON



No. 2, Joo Koon Road,
Singapore 628966

PIONEER JUNCTION



No.3, Soon Lee Street, #04-14,
16,17, Pioneer Junction,
Singapore 627606

WAN LEE



No. 2, Wan Lee Road,
Singapore 627934

WE ARE
ALWAYS WITH YOU
FOR YOUR
TRAINING NEEDS

+65 6297 8417 www.eversafe.edu.sg
+65 9381 3608 training@eversafe.com.sg



TALK TO _____
OUR EXPERT!

Scan to Visit
Our Website

